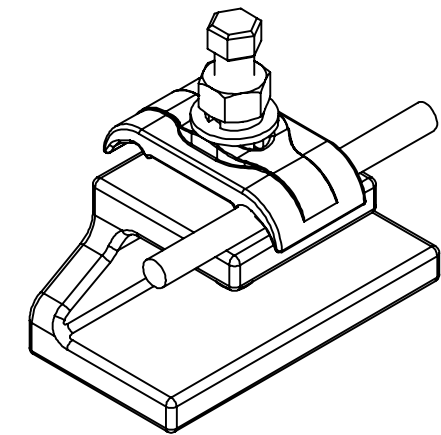
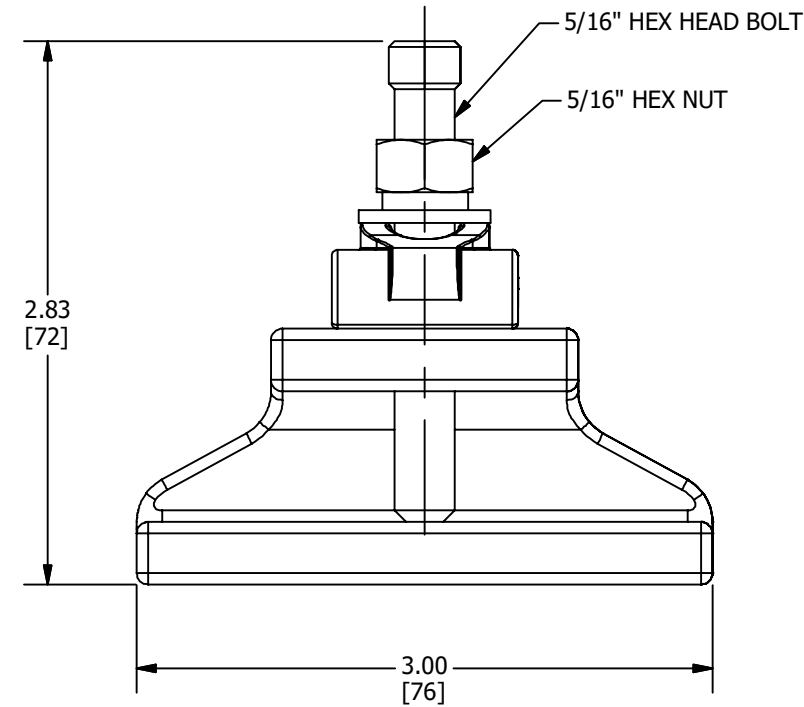
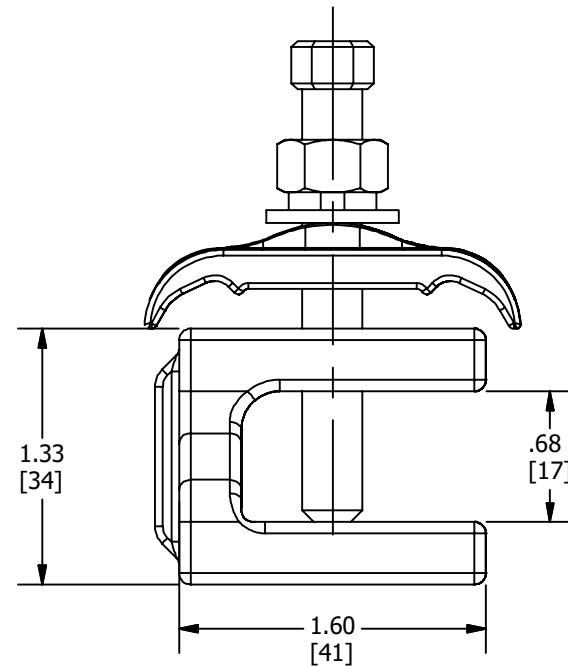
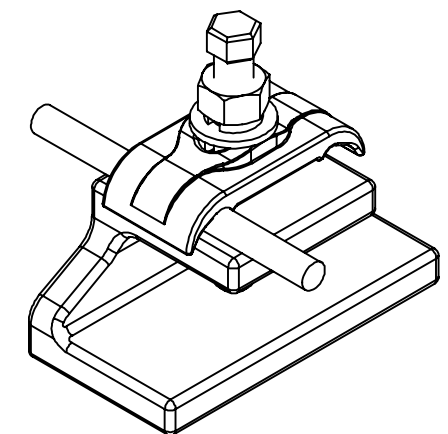
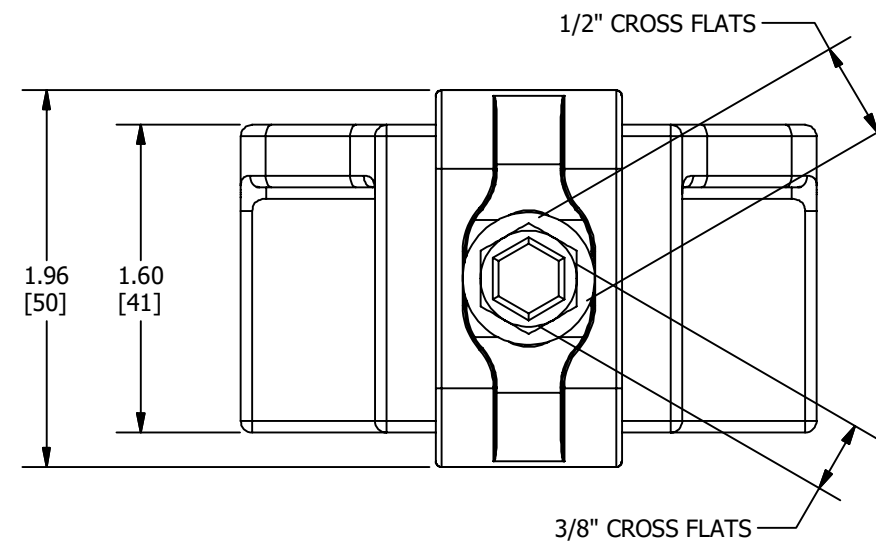


REV	DATE	DESCRIPTION	ECO	BY	C'H'K.
B	11/22/2019	NOTES UPDATE	52560	PB	RG



PARALLEL CONFIGURATION



PERPENDICULAR CONFIGURATION

NOTES:

1. DIMENSIONS IN BRACKETS [] ARE IN MILLIMETERS ROUNDED OFF TO THE NEAREST MILLIMETER, UNLESS OTHERWISE SPECIFIED AND ARE FOR REFERENCE ONLY.
2. MATERIAL: CLAMP BODY: CAST COPPER ALLOY
HARDWARE: STAINLESS STEEL
3. cULus LISTED TO GROUNDING AND BONDING EQUIPMENT STANDARD.
UL467 LISTED TO GROUNDING AND BONDING EQUIPMENT STANDARD.
4. ACCOMMODATES WIRE #6 AWG TO 2/0 AWG.
ACCOMMODATES STEEL 1/8" TO 5/8" THICK.
5. INSTALLATION TORQUE:
SCREW: 100 IN-LB
NUT: 180 IN-LB
6. WIRES CAN BE INSTALLED IN EITHER A PARALLEL OR PERPENDICULAR ARRANGEMENT, AS SHOWN IN INSTALLED VIEW.
7. PRODUCT IS SUITABLE FOR DIRECT BURIAL APPLICATIONS.
8. ADD SUFFIX "TN" FOR TIN PLATED FINISH ON CLAMP BODY AND CAP.

TO ORDER BURNDY® PRODUCTS CALL

UNITED STATES
1-800-346-4175 (LONDONDERRY, NH)

CANADA:
1-800-387-6487

FOR PRODUCT INFO: <http://www.burndy.com>

GROUND CLAMP TO STEEL

ITEM NO: 50094528

CAT. NO: GCS26HEX

DRAWN BY: G.RUGGIERO 09/05/2018

CHECKER: L.TROMBLEY 11/05/2018

DSN APRV: L.TROMBLEY 11/05/2018

MFG APRV: A.SALAZAR 11/26/2018

QA APRV: E.VARGAS 10/24/2018

MKT APRV: R.RULAND 11/13/2018



PROD FAM: C&I - GROUNDING	DRAWING NO	REV
PROJECT #: FOCUS	SIZE	50094529
DOCUMENT TYPE: SALES	B	B
REL LEVEL: Released	SHEET 1 OF 1	