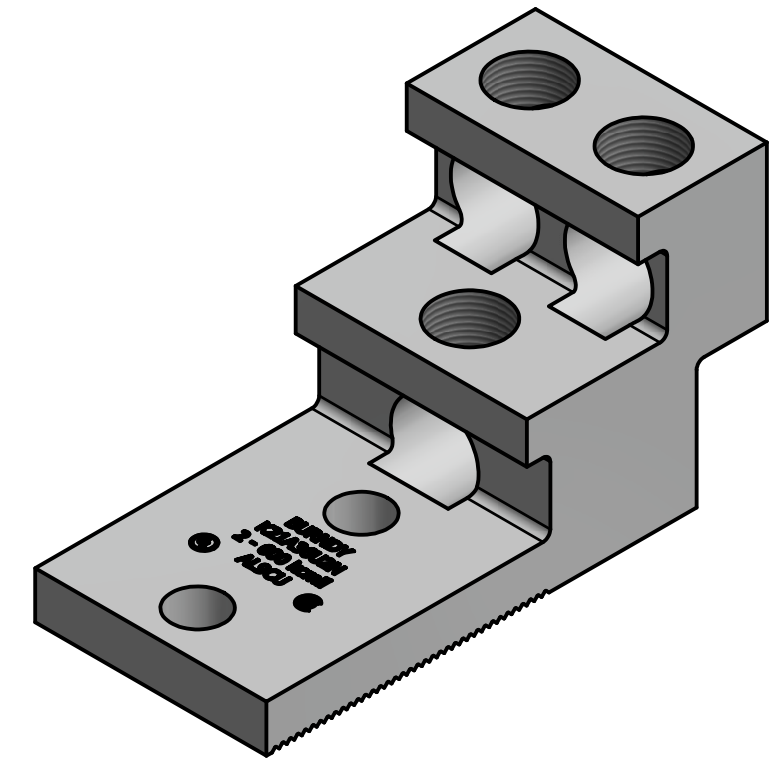
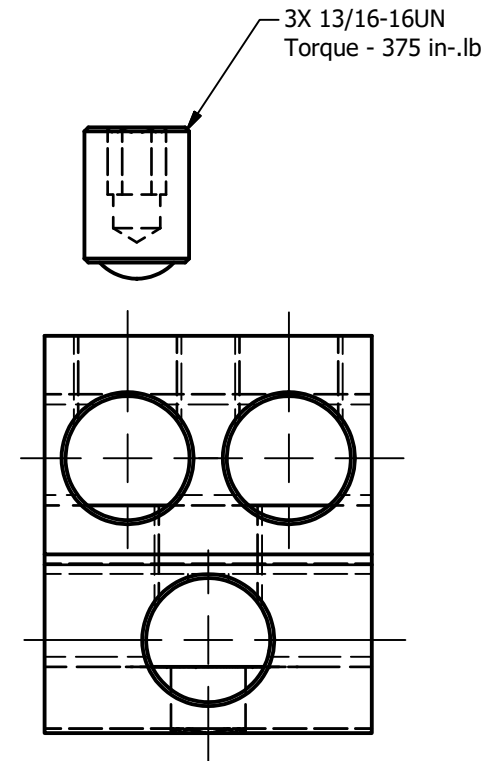
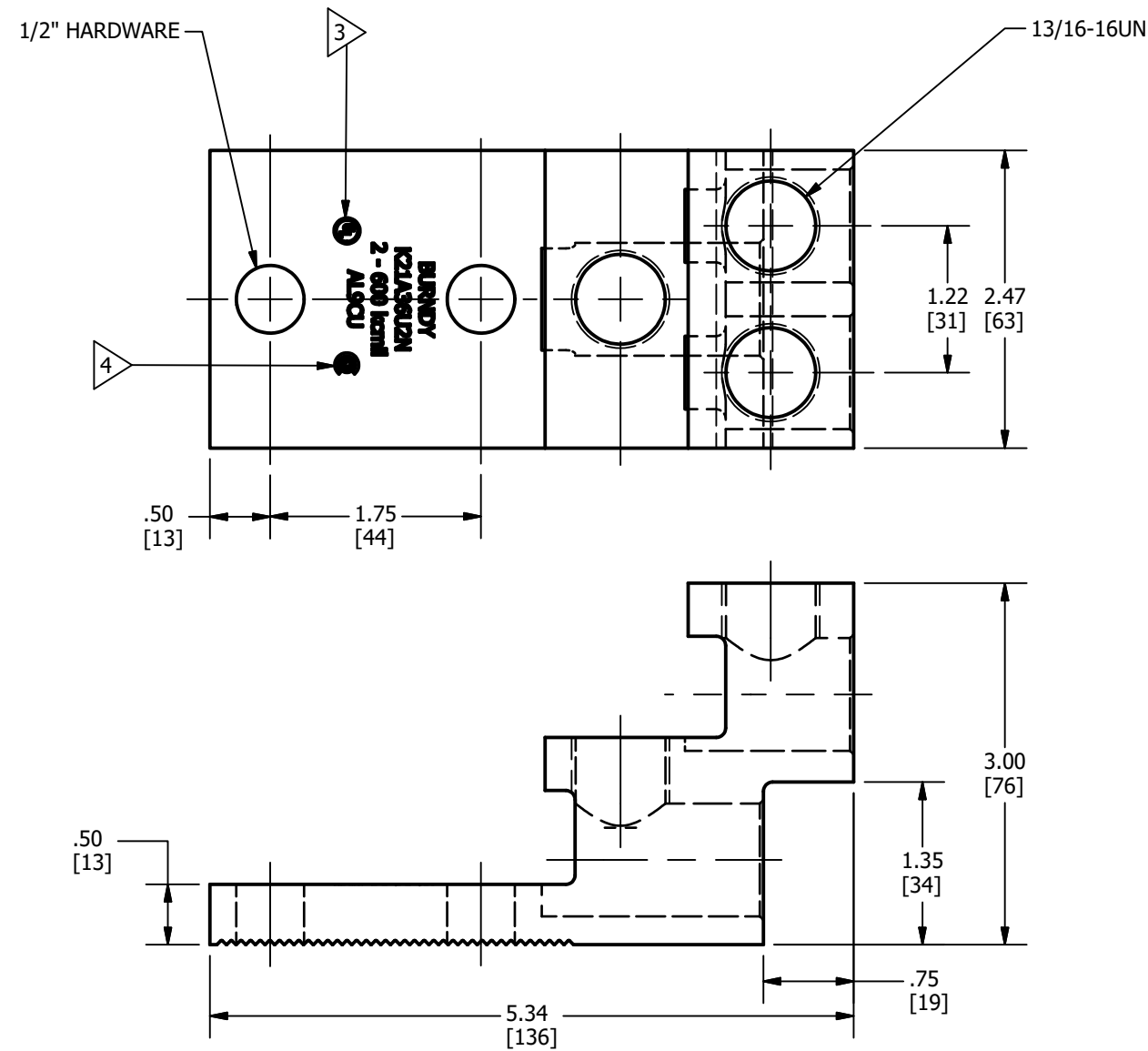


REV	DATE	DESCRIPTION	ECO	BY	C'H'K.
A	09/26/2018	NEW DRAWING	49975	JL	KC



**NOTES:**

- METERAIL: BODY - ALUMINUM  
SCREW - ALUMINUM
- FINISH-BODY: TIN - PLATED  
SCREW: TIN - PLATED
- CONNECTORS ARE UL LISTED TO UL486A - 486B FOR ALUMINUM AND COPPER CONDUCTORS AT 90°C.
- CONNECTORS ARE CSA CERTIFIED TO C22.2. NO. 65 FOR INDICATED CONDUCTORS RANGE.
- NOT RECOMMENDED FOR USE IN HIGHLY CORROSIVE ENVIROMMENT.
- DIMENSIONS IN BRACKETS [ ] ARE IN MILLIMETERS ROUNDED OFF TO THE NEAREST MILLIMETER, UNLESS OTHERWISE SPECIFIED AND ARE FOR REFERENCE ONLY.

TO ORDER BURNDY® PRODUCTS CALL  UNITED STATES 1-800-346-4175 (LONDONDERRY, NH)  CANADA: 1-800-361-6975 (QUEBEC) 1-800-387-6487 (ALL OTHER PROVINCES)  FOR PRODUCT INFO: <a href="http://www.burndy.com">http://www.burndy.com</a>	UNIVERSAL TERMINAL		
	ITEM NO: 30021396		
	CAT. NO: K21A36U2N		
	DRAWN BY: JL.BERGERON	9/26/2018	<b>BURNDY</b>
	CHECKER: K.CASTONGUAY	9/26/2018	
	DSN APRVL: T.REYNOLDS	10/15/2018	
	MFG APRVL: --		
	QA APRVL: B.POST	10/15/2018	
	MKT APRVL: M.BAILLY	10/15/2018	
	PROD FAM: --		
PROJECT #: --	SIZE		
DOCUMENT TYPE: SALES	B		
REL LEVEL: Released			
DRAWING NO	REV		
50094861	A		
SHEET 1 OF 1			