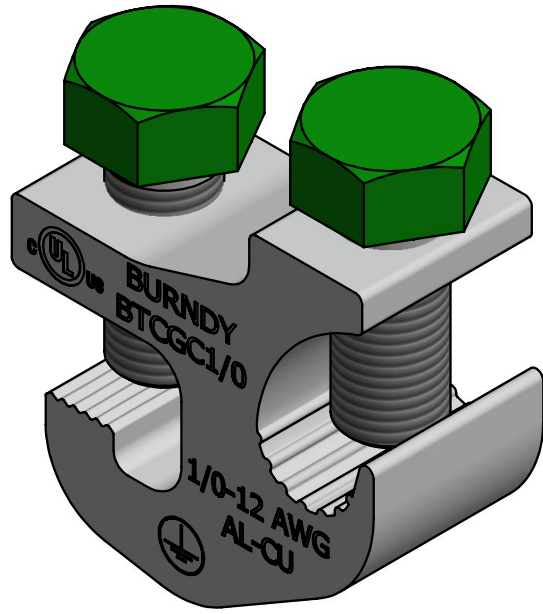
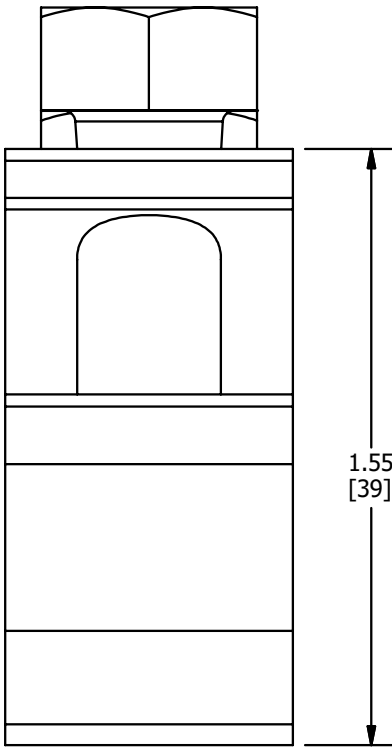
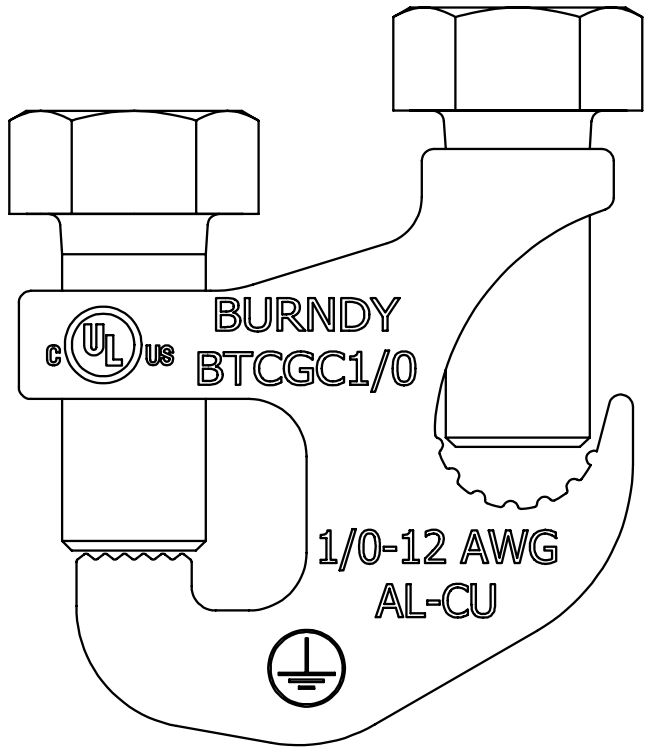
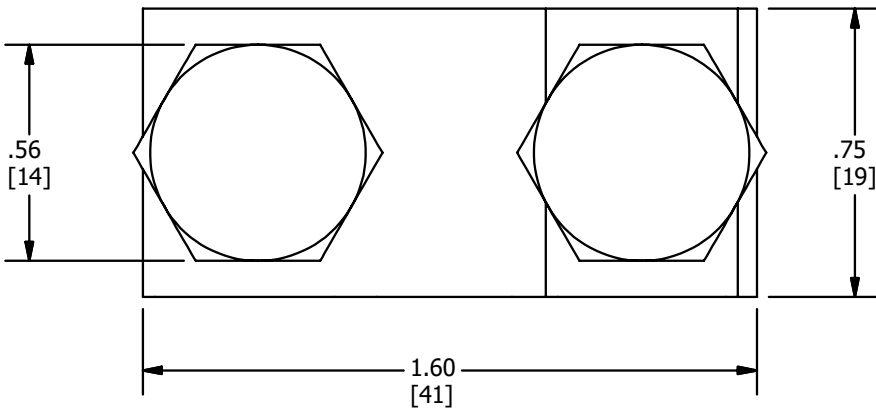


REV	DATE	DESCRIPTION	ECO	BY	C'H'K.
D	13-08-2019	NOTES UPDATED FOR WIRE RANGE DETAILS	51966	TM	EM



NOTES:

- MATERIAL: ALUMINUM
FINSH: TIN PLATE
HARDWARE: STAINLESS STEEL (PREINSTALLED IN CLAMP)
- ACCOMODATES GROUND WIRE SIZE #12 TO 1/0 kcmil.
- TORQUE ON CONDUCTOR: 100 IN LB.
TORQUE ON CABLE TRAY: 150 IN LB.
- cULus LISTED GROUNDING AND BONDING CONNECTOR.
FLANGE THICKNESS: .063 - .375 INCH BARE AL OR 20 GA - .375 INCH GALVANIZED STEEL.
CONDUCTOR: 12 - 1/0 AWG CU STR/SOL, 10 - 1/0 AWG AL STR/SOL.
- cULus LISTED PHOTOVOLTAIC GROUNDING DEVICE.
FLANGE THICKNESS: 20 GA - .375 INCH GALVANIZED STEEL.
CONDUCTOR: 12 - 1/0 AWG CU STR/SOL, 10 - 1/0 AWG AL STR/SOL.
- DIMENSIONS IN BRACKETS [] ARE IN MILLIMETERS ROUNDED OFF TO THE NEAREST MILLIMETER, UNLESS OTHERWISE SPECIFIED AND ARE FOR REFERENCE ONLY.

TO ORDER BURNDY® PRODUCTS CALL
 UNITED STATES
 1-800-346-4175 (LONDONDERRY, NH)
 CANADA:
 1-800-361-6975 (QUEBEC)
 1-800-387-6487 (ALL OTHER PROVINCES)
 FOR PRODUCT INFO: <http://www.burndy.com>

TRAY CLAMP	
ITEM NO: 50096989	
CAT. NO: BTCGC1/0SS	
DRAWN BY: B.PARTHIBAN	17-12-2018
CHECKER: E.MARTIN	13-08-2019
DSN APRVL: E.MARTIN	13-08-2019
PUR APRVL: J.VERRANAULT	13-08-2019
QA APRVL: B.ELLIOTT	13-08-2019
MKT APRVL: --	
PROD FAM: GROUNDING	DRAWING NO
PROJECT #:	SIZE
DOCUMENT TYPE: SALES	50097482
REL LEVEL: Released	B
	SHEET 1 OF 1
	REV
	D

