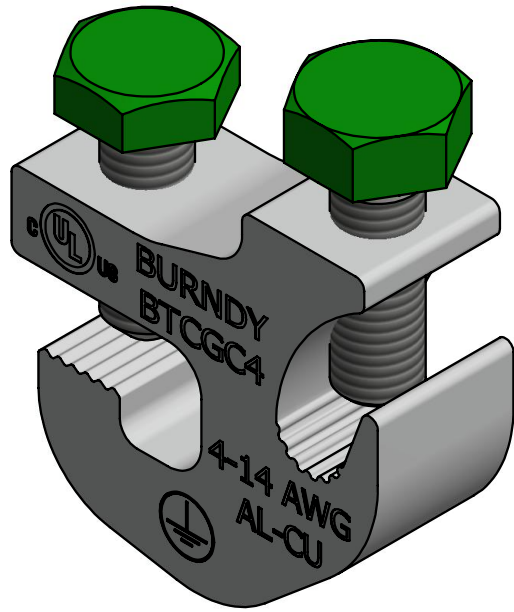
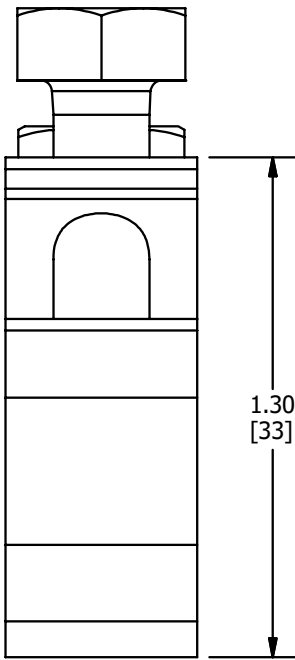
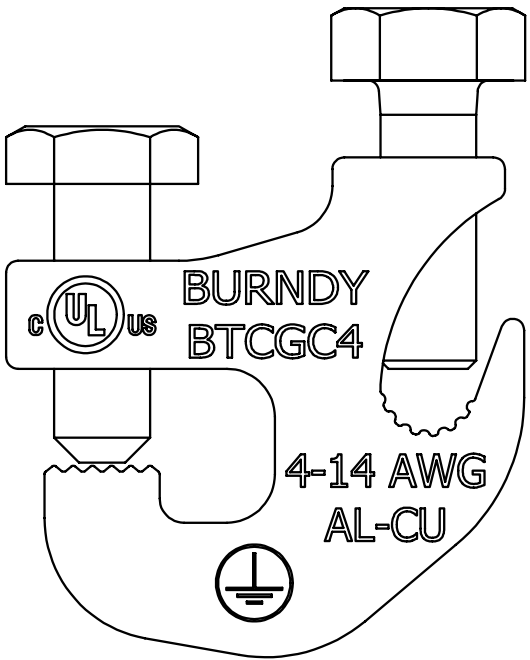
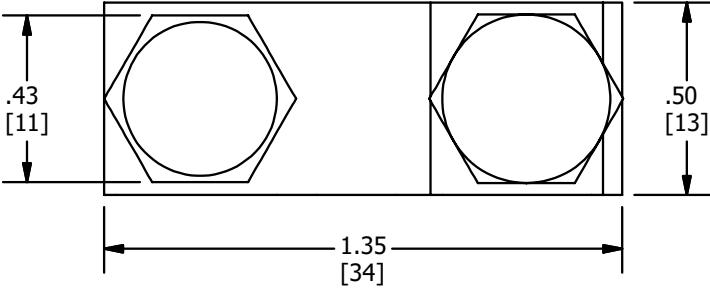


REV	DATE	DESCRIPTION	ECO	BY	C'H'K.
C	13-08-2019	NOTES UPDATED FOR WIRE RANGES	51966	TM	EM



NOTES:

1. MATERIAL: ALUMINUM
FINSH: TIN PLATE
HARDWARE: STAINLESS STEEL (PREINSTALLED IN CLAMP)
2. ACCOMODATES GROUND WIRE SIZE 14AWG TO 4AWG.
3. TORQUE ON CONDUCTOR: 35 IN LB.
TORQUE ON CABLE TRAY: 50 IN LB.
4. cULus LISTED GROUNDING AND BONDING CONNECTOR.
FLANGE THICKNESS: .04 - .25 INCH ANODIZED AL OR 20 GA TO .25 INCH GALVANIZED STEEL.
CONDUCTOR: 14 - 4 AWG CU STR/SOL, 10 - 4 AWG AL STR/SOL.
5. cULus LISTED PHOTOVOLTAIC GROUNDING DEVICE.
FLANGE THICKNESS: .04 - .25 INCH ANODIZED AL OR 20 GA TO .25 INCH GALVANIZED STEEL.
CONDUCTOR: 14 - 4 AWG CU STR/SOL, 10 - 4 AWG AL STR/SOL.
6. DIMENSIONS IN BRACKETS [] ARE IN MILLIMETERS ROUNDED OFF TO THE NEAREST MILLIMETER, UNLESS OTHERWISE SPECIFIED AND ARE FOR REFERENCE ONLY.

TO ORDER BURNDY® PRODUCTS CALL
 UNITED STATES
 1-800-346-4175 (LONDONDERRY, NH)
 CANADA:
 1-800-361-6975 (QUEBEC)
 1-800-387-6487 (ALL OTHER PROVINCES)
 FOR PRODUCT INFO: <http://www.burndy.com>

TRAY CLAMP	
ITEM NO: 50096991	
CAT. NO: BTCGC4SS	
DRAWN BY: B.PARTHIBAN 17-12-2018	
CHECKER: E.MARTIN 13-08-2019	
DSN APRVL: E.MARTIN 13-08-2019	
PUR APRVL: J.VERRANAULT 13-08-2019	
QA APRVL: B.ELLIOTT 13-08-2019	
MKT APRVL: --	
PROD FAM: GROUNDING	DRAWING NO
PROJECT #: --	50097483
DOCUMENT TYPE: SALES	REV
REL LEVEL: Released	C
	SHEET 1 OF 1