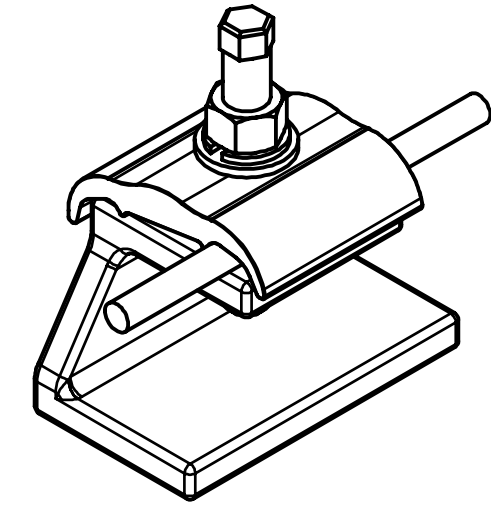
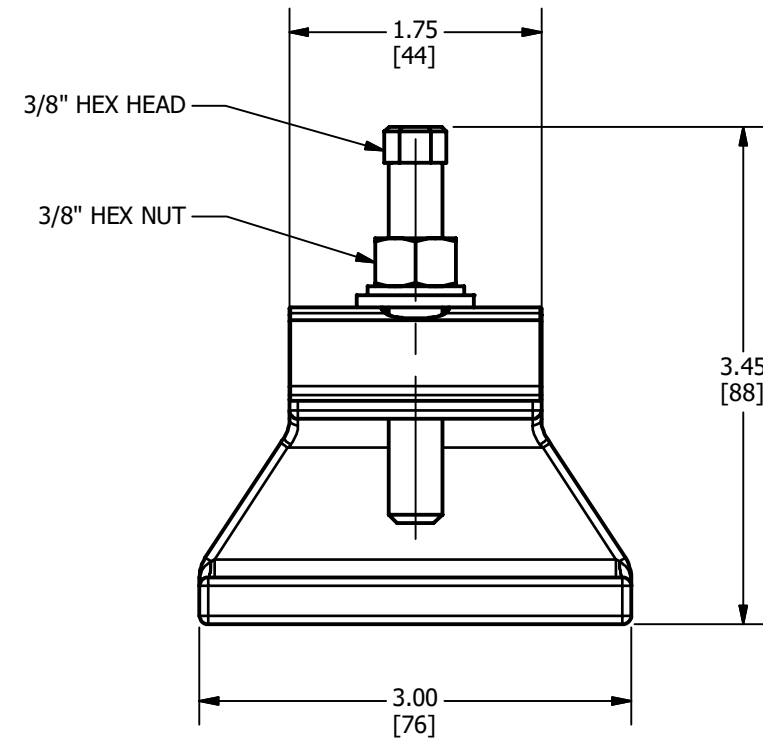
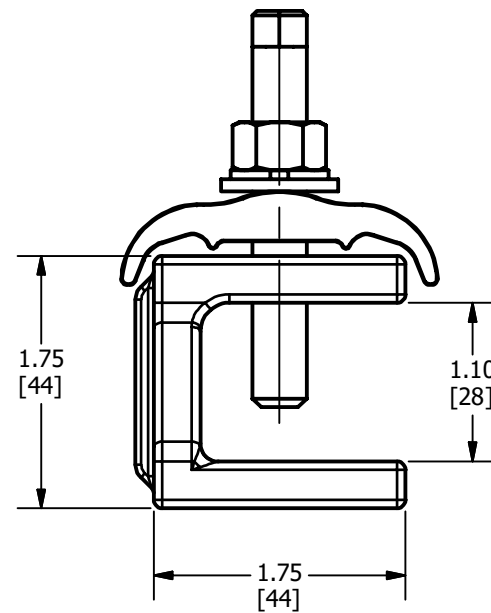
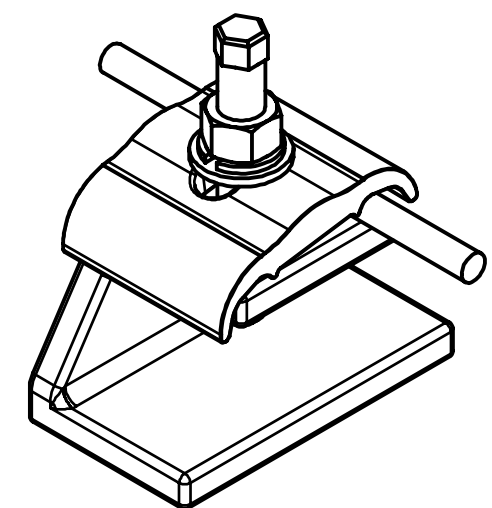
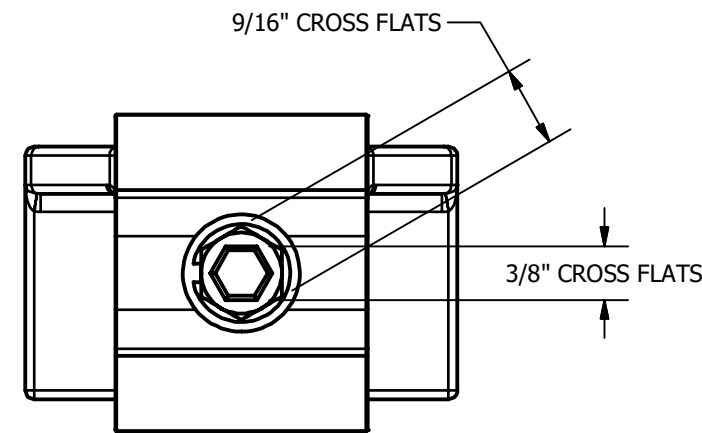


REV	DATE	DESCRIPTION	ECO	BY	C'H'K.
C	11/22/2019	NOTES UPDATED AND PARALLEL AND PERPENDICULAR CONFIGURATION SHOWN	52560	PB	RG



PARALLEL CONFIGURATION



PERPENDICULAR CONFIGURATION

**NOTES:**

1. DIMENSIONS IN BRACKETS [ ] ARE IN MILLIMETERS ROUNDED OFF TO THE NEAREST MILLIMETER, UNLESS OTHERWISE SPECIFIED AND ARE FOR REFERENCE ONLY.
2. MATERIAL:  
 CLAMP BODY : CAST COPPER ALLOY  
 HARDWARE : SCREW AND WASHERS - STAINLESS STEEL  
 NUT - BRONZE
3. UL467 LISTED TO GROUNDING AND BONDING EQUIPMENT STANDARD.
4. ACCOMMODATES WIRE #2 TO 250 kcmil.  
 ACCOMMODATES STEEL 1/4" TO 1" THICK.
5. INSTALLATION TORQUE:  
 SCREW : 180 IN-LB  
 NUT : 240 IN-LB
6. WIRES CAN BE INSTALLED IN EITHER A PARALLEL OR PERPENDICULAR ARRANGEMENT, AS SHOWN IN INSTALLED VIEW.
7. PRODUCT IS SUITABLE FOR DIRECT BURIAL APPLICATIONS.
8. ADD SUFFIX "TN" FOR TIN PLATED FINISH ON CLAMP BODY AND CAP.

TO ORDER BURNDY® PRODUCTS CALL		GROUND CLAMP TO STEEL	
UNITED STATES 1-800-346-4175 (LONDONDERRY, NH)		ITEM NO: 50097511	
CANADA: 1-800-387-6487		CAT. NO: GCS29HEX	
FOR PRODUCT INFO: <a href="http://www.burndy.com">http://www.burndy.com</a>		DRAWN BY: B.PARTHIBAN 01/22/2019	
		CHECKER: E.MARTIN 11/05/2019	
		DSN APRVL: C.BECERRIL 11/05/2019	
		MFG APRVL: --	
		QA APRVL: A.PINEDA 11/06/2019	
		MKT APRVL: --	
		PROD FAM: C&I - GROUNDING	
		DRAWING NO	
		50097711	
		REV	
		C	
		SHEET 1 OF 1	