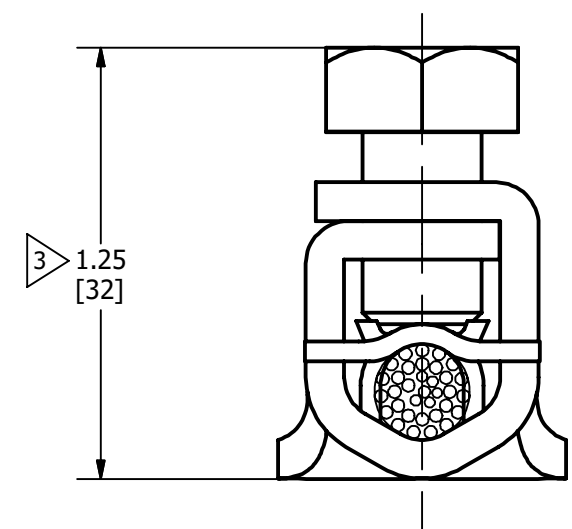
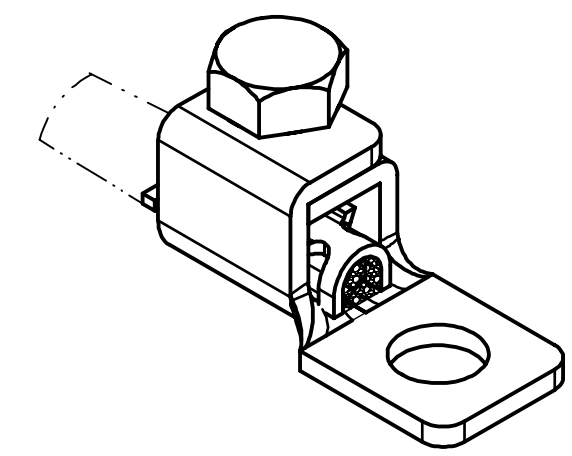
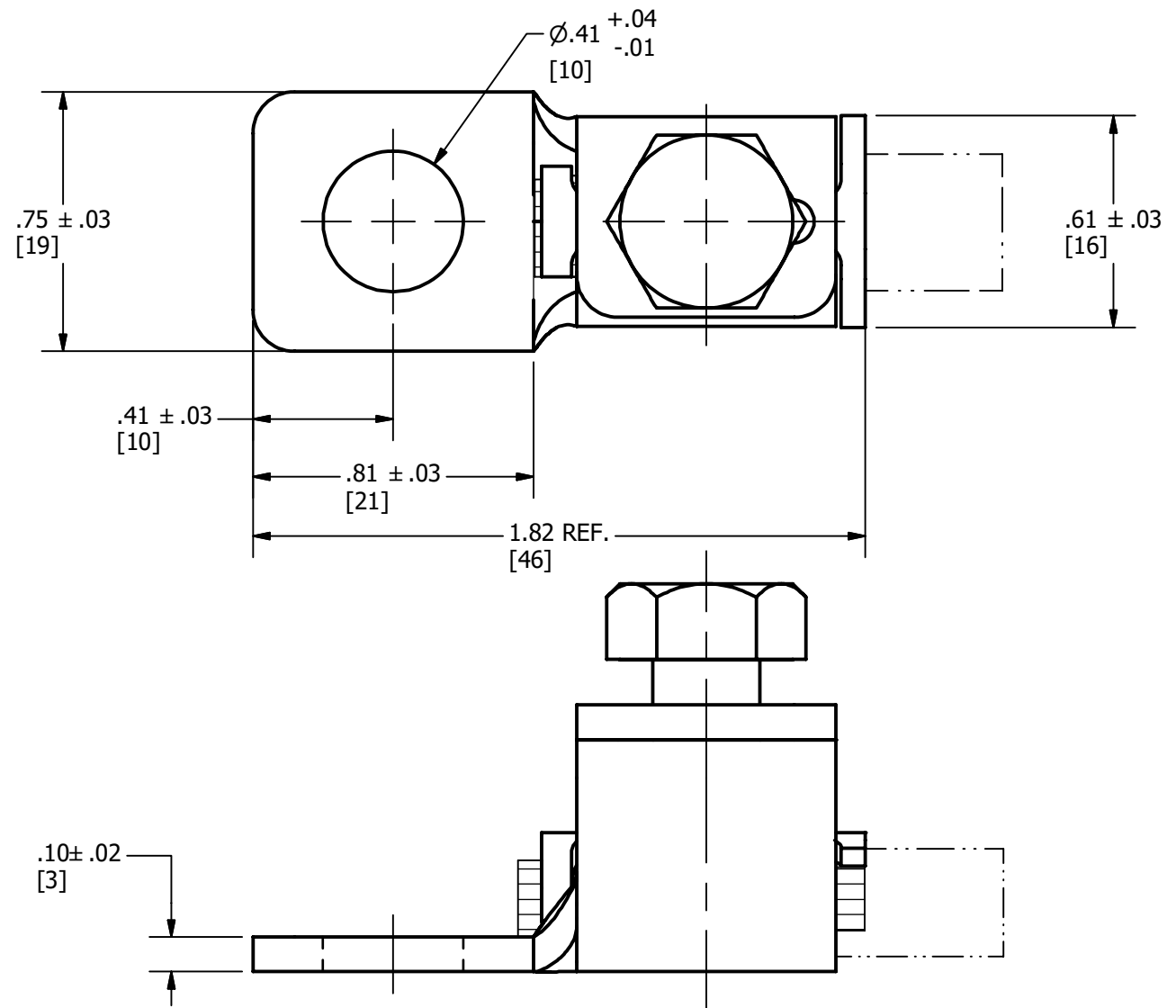


CATALOG NUMBER	COMMERCIAL CABLE SIZE	NAVY CABLE SIZE	WEIGHT OZ	RECOMMENDED TIGHTENING TORQUE IN-LBS [N-M]
KPA25G8	1/0 STR (.373) - # 4 STR (.231) 50mm <sup>2</sup> STR (9.27 mm DIA.) - 16mm <sup>2</sup> STR (5.13mm DIA.)	#50 (.254) , #60 (.282), #75 (.345) , #100 (.363)	1.50	180 [20.3]

REV	DATE	DESCRIPTION	ECO	BY	CHK.
A	11/28/2019	NEW SALES DRAWING CREATED	52597	YR	SS



NOTES:

- 1. MATERIAL: COPPER ALLOY
- 2. FINISH: TIN PLATED.

3. APPROXIMATE BEFORE COMPRESSION WITH MAXIMUM CABLE IN PLACE.

4. DIMENSIONS IN BRACKETS [ ] ARE IN MILLIMETERS ROUNDED OFF TO THE NEAREST MILLIMETER, UNLESS OTHERWISE SPECIFIED AND ARE FOR REFERENCE ONLY.

TO ORDER BURNDY® PRODUCTS CALL

UNITED STATES  
1-800-346-4175 (LONDONDERRY, NH)

CANADA:  
1-800-361-6975 (QUEBEC)  
1-800-387-6487 (ALL OTHER PROVINCES)

FOR PRODUCT INFO: <http://www.burndy.com>

SCRULUG™			
ITEM NO: 387003			
CAT. NO: KPA25G8			
DRAWN BY: R.YOGARAJ	11/28/2019		
CHECKER: S.SAURABH	11/28/2019		
DSN APRVL: --			
MFG APRVL: --			
QA APRVL: --			
MKT APRVL: --		DRAWING NO	REV
PROD FAM: --		50104953	A
PROJECT #: --	SIZE		
DOCUMENT TYPE: SALES	B		
REL LEVEL: Released		SHEET 1 OF 1	