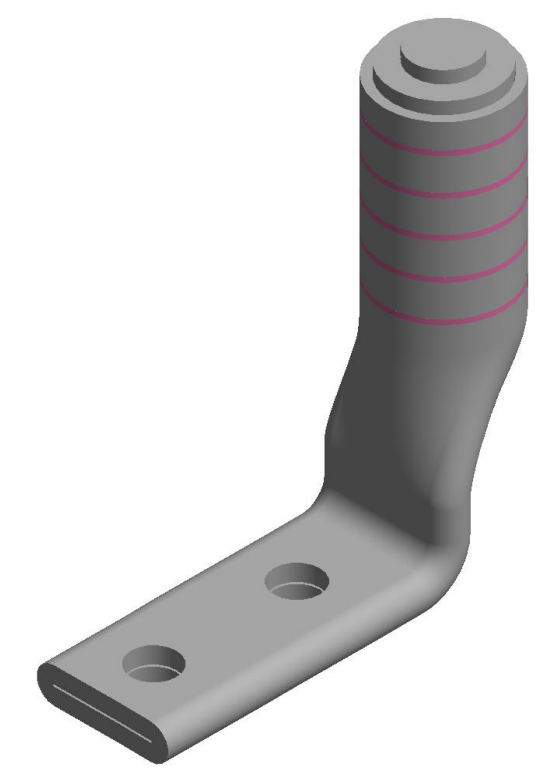
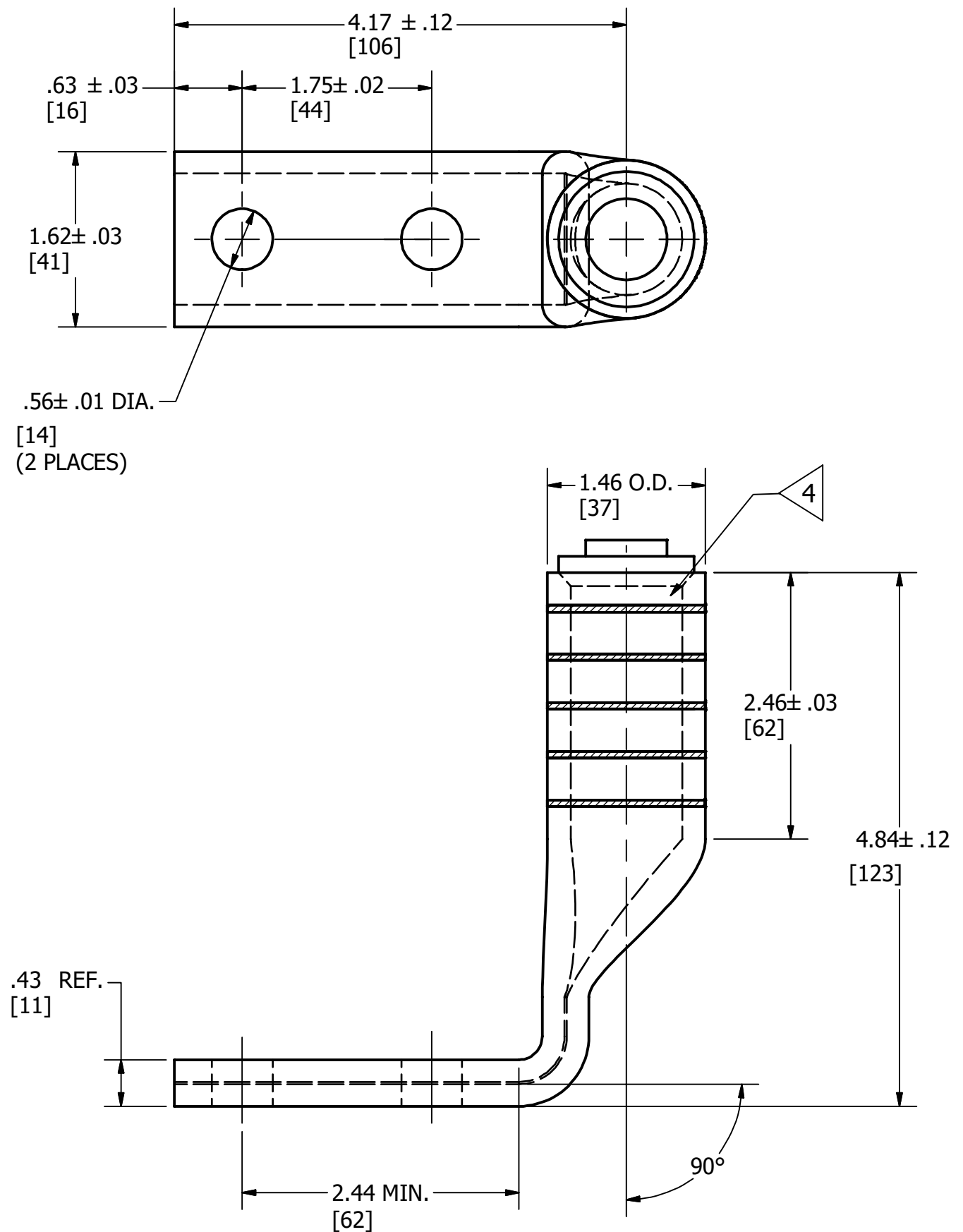


CATALOG NUMBER	CONDUCTOR		STUD SIZE	BURNDY® INSTALLATION TOOLING (# OF CRIMPS)										STRIP LENGTH			
	ALUMINUM	COPPER		DIE INFORMATION		COLOR CODE	MECHANICAL		HYDRAULIC				DIELESS (# CRIMPS)				
				DIE INDEX	TYPE		MD6	OUR840	Y34A Y34B	Y35, Y39 Y750 PAT750	Y46	Y45	Y48BH		Y60	MECHANICAL	HYDRAULIC
YA39A590	700-750 kcmil CLASS B CONCENTRIC COMPRESSED SIW 900 kcmil CLASS B COMPACT ONLY	700-750 kcmil CLASS B, C CONCENTRIC COMPRESSED COMPACT	1/2	936	YELLOW DIE SET NEST INDENTOR	YELLOW	---	---	---	U39ART-2 (4)	U39ART-2 (4)	U39ART-2 (4)	---	L39ART-2 (2)	---	Y81KFT (4) PAT81KFT (4) Y644 (1) PAT644 (1)	2 7/8"

REV	DATE	DESCRIPTION	ECO	BY	C'H'K.
A	06/26/2020	NEW DRAWING CREATION	53788	SS	YR



NOTES:

1. MATERIAL : COPPER TUBING.
2. FINISH: NICKEL PLATED.
3. REMOVE ALL EXCESS PENETROX™ FROM CONNECTOR AND ADJACENT CONDUCTOR PRIOR TO TAPING.
4. CONNECTOR BARRELS PREFILLED WITH PENETROX™.
5. CATALOG # PT6515 ADAPTOR IS REQUIRED TO USE "U" DIES IN Y45 SERIES TOOLS.
6. CATALOG # PUADP-1 ADAPTOR IS REQUIRED TO USE "U" DIES IN Y46 SERIES TOOLS.
7. Y35P3 INDENTOR ADAPTOR IS REQUIRED FOR "Y34PR" TYPE INDENTORS.
8. FOR USE BY CUSTOMERS THAT HAVE THIS HYPRESS™. NO NEW HYPRESSES™ ARE BEING PROCESSED.
9. DIMENSIONS IN BRACKETS [] ARE IN MILLIMETERS ROUNDED OFF TO THE NEAREST MILLIMETER, UNLESS OTHERWISE SPECIFIED AND ARE FOR REFERENCE ONLY.
10. USE Y644M OR PAT644-18V DIELESS HYPRESS™ ONLY WHEN INSTALATION 900 kcmil COMPACT ALUMINUM NOT UL CSA LISTED WITH 900 kcmil COMPACT ALUMINUM USING ANY TOOL.

TO ORDER BURNDY® PRODUCTS CALL		HYLUG™	
UNITED STATES 1-800-346-4175 (LONDONDERRY, NH)		ITEM NO: 537098	
CANADA: 1-800-361-6975 (QUEBEC) 1-800-387-6487 (ALL OTHER PROVINCES)		CAT. NO: YA39A590	
FOR PRODUCT INFO: http://www.burndy.com		DRAWN BY: M.SAURABH 6/29/2020	
		CHECKER: R.YOGARAJ 6/29/2020	
		DSN APRVL: R.ROMAN 9/10/2020	
		MFG APRVL: --	
		QA APRVL: J.BRODEUR 9/9/2020	
		MKT APRVL: B.MICHAUD 9/9/2020	
		PROD FAM: --	
		PROJECT #: --	
		DOCUMENT TYPE: SALES	
		REL LEVEL: Released	
		DRAWING NO	
		50105141	
		REV	
		A	
		SHEET 1 OF 1	