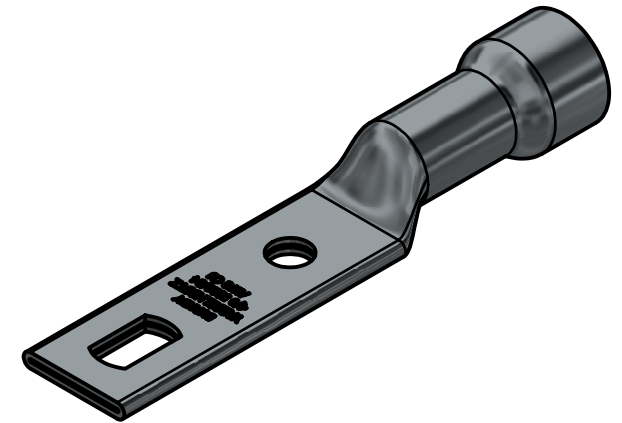
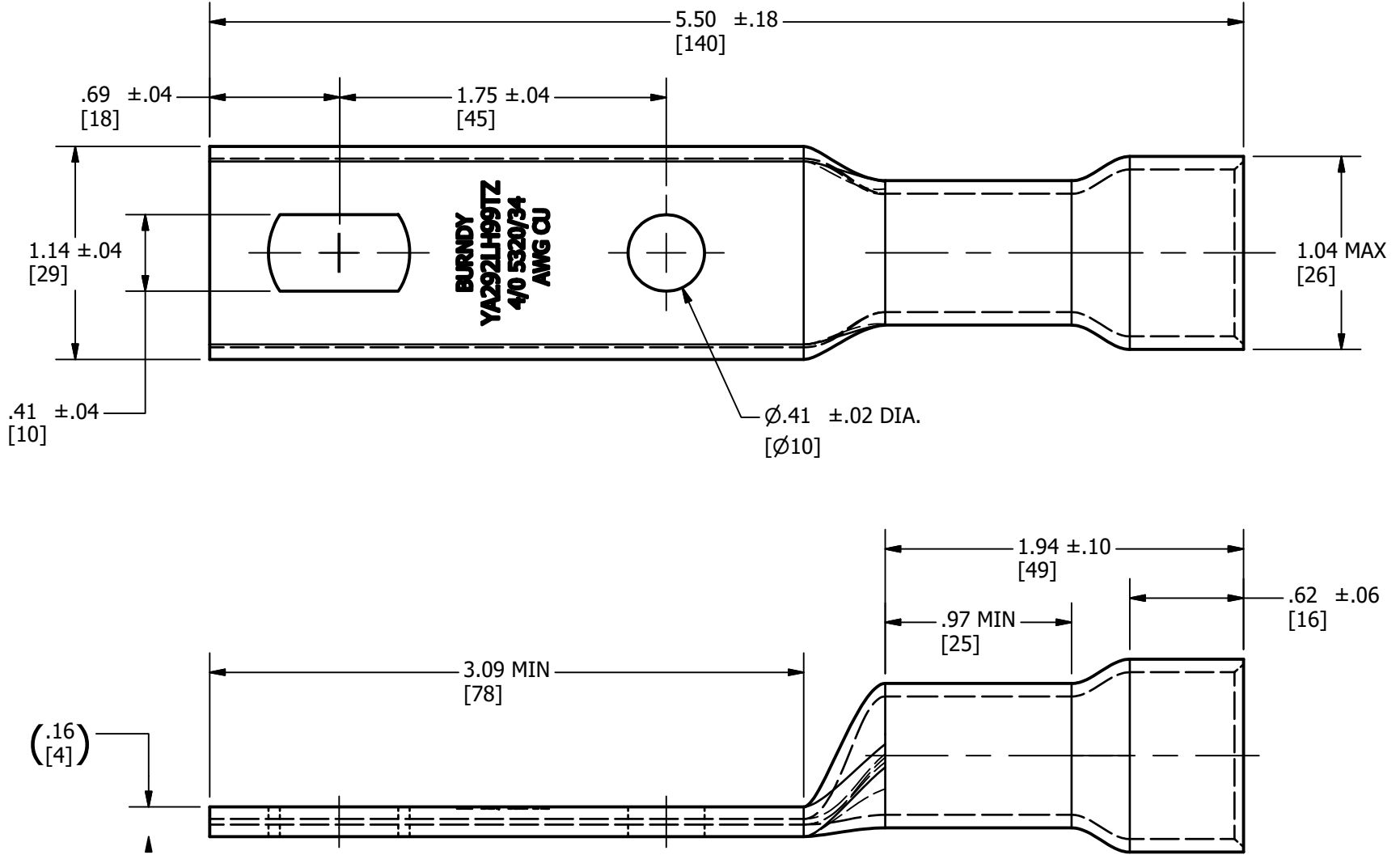


CU CONDUCTOR	DIE TYPE	INSTALLATION TOOLING (# OF CRIMPS)			
		MECHANICAL RATCHET	HYDRAULIC		
		MD6,MD7,MD6--2,PAT600, PATMD6,MD7-34R,BCT500	Y35,Y39	Y46	Y45
4/0 AWG CLASS M (5320/34)	DIE SET	W28RT (2)	U28RT (1)	U28RT (1)	U28RT (1)
	NEST	--	U29D-1(1)	U29D-1(1)	U29D-1(1)
	INDENTOR	--	Y34PR	Y34PR	Y34PR

REV	DATE	DESCRIPTION	ECO	BY	C'H'K.
A	10/29/2019	NEW DRAWING	52404	JL	RR



NOTES:

1. MATERIAL: COPPER TUBING.
2. FINISH: TIN - ZINC PLATED
3. CATALOG #PT6515 ADAPTOR IS REQUIRED TO USE "U" DIES IN Y45 SERIES TOOLS.
4. CATALOG #PUADP-1 ADAPTOR IS REQUIRED TO USE "U" DIES IN Y46 SERIES TOOLS
5. Y35P3 INDENTOR ADAPTOR IS REQUIRED FOR Y34PR INDENTOR.
6. DIMENSIONS IN BRACKETS [] ARE IN MILLIMETERS ROUNDED OFF TO THE NEAREST MILLIMETER, UNLESS OTHERWISE NOTED, AND ARE FOR REFERENCE ONLY.
7. USE HEAT SHRINK TO CLOSE GAP BETWEEN SHROUD AND WIRE INSULATION.

TO ORDER BURNDY PRODUCTS CALL		HYLUG™	
UNITED STATES 1-800-346-4175 (LONDONDERRY, NH)		ITEM NO: 50101881	
CANADA: 1-800-361-6975 (QUEBEC) 1-800-387-6487 (ALL OTHER PROVINCES)		CAT. NO: YA292LH99TZ	
FOR PRODUCT INFO: http://www.burndy.com		DRAWN BY: JL BERGERON 10/29/2019	
		CHECKER: R.ROMAN 10/29/2019	
		DSN APRVL: R.ROMAN 11/15/2019	
		MFG APRVL: B.FAUCHER 11/18/2019	
		QA APRVL: B.ELLIOTT 11/15/2019	
		MKT APRVL: B.MICHAUD 11/15/2019	
PROD FAM: CM&R COMPRESSION	DRAWING NO	REV	
PROJECT #: NPD02763	SIZE	5010625	A
DOCUMENT TYPE: SALES	B		
REL LEVEL: Released			