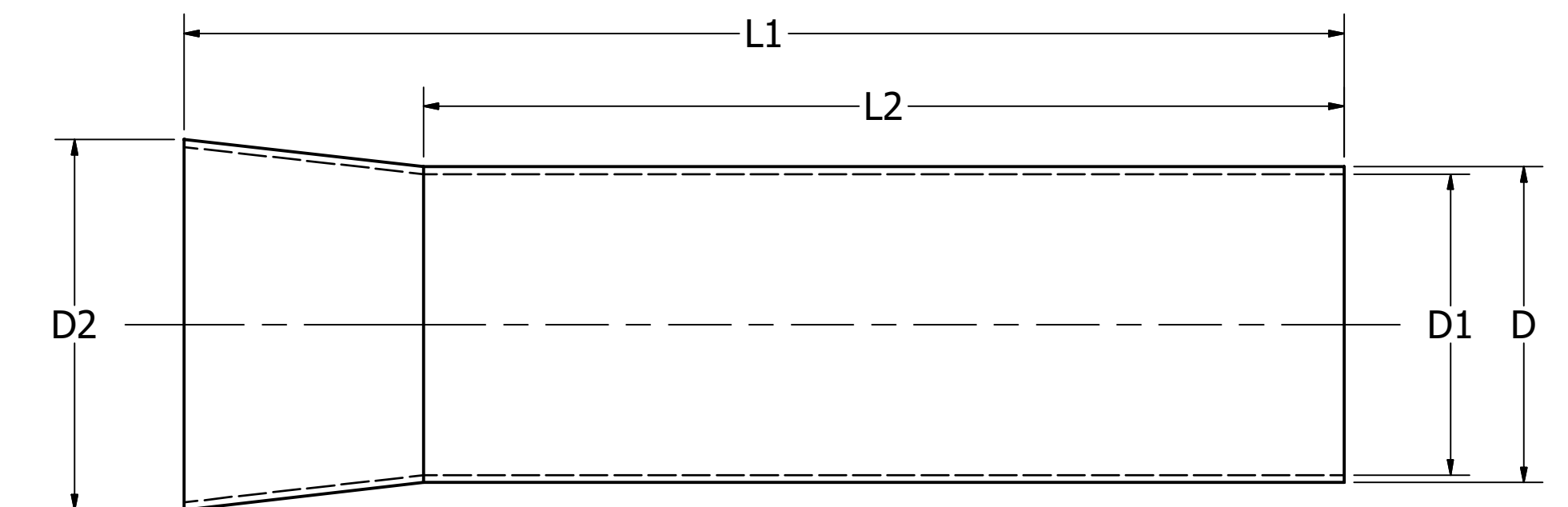


BURNDY CAT. NO.	AWG	mm ²	L1	L2	D	D1	D2	RECOMMENDED TOOLING
YF2006UIL	20	0.75	.24 [6.0]	.21 [5.3]	.06 [1.5]	.05 [1.2]	.09 [2.2]	YF261CSKIT WITH YF2610D DIE
YF2010UIL			.39 [10.0]	.37 [9.3]		.05 [1.2]	.09 [2.2]	
YF2012UIL			.47 [12.0]	.44 [11.3]		.05 [1.2]	.09 [2.2]	
YF1806UIL	18	1	.24 [6.0]	.21 [5.3]	.07 [1.7]	.06 [1.4]	.09 [2.4]	
YF1808UIL			.32 [8.0]	.29 [7.3]		.06 [1.4]	.09 [2.4]	
YF1810UIL			.39 [10.0]	.37 [9.3]		.06 [1.4]	.09 [2.4]	
YF1812UIL	16	1.5	.47 [12.0]	.44 [11.3]	.08 [2.0]	.06 [1.4]	.09 [2.4]	
YF1607UIL			.28 [7.0]	.24 [6.0]		.07 [1.7]	.11 [2.8]	
YF1608UIL			.32 [8.0]	.28 [7.0]		.07 [1.7]	.11 [2.8]	
YF1610UIL	14	2.5	.39 [10.0]	.35 [9.0]	.10 [2.5]	.07 [1.7]	.11 [2.8]	
YF1612UIL			.47 [12.0]	.43 [11.0]		.07 [1.7]	.11 [2.8]	
YF1408UIL			.32 [8.0]	.28 [7.0]		.09 [2.2]	.13 [3.4]	
YF1410UIL	12	4	.39 [10.0]	.35 [9.0]	.13 [3.2]	.09 [2.2]	.13 [3.4]	
YF1412UIL			.47 [12.0]	.43 [11.0]		.09 [2.2]	.13 [3.4]	
YF1209UIL			.35 [9.0]	.32 [8.0]		.11 [2.8]	.16 [4.0]	
YF1212UIL	10	6	.47 [12.0]	.43 [11.0]	.15 [3.9]	.11 [2.8]	.16 [4.0]	
YF1215UIL			.59 [15.0]	.55 [14.0]		.11 [2.8]	.16 [4.0]	
YF1010UIL			.39 [10.0]	.35 [9.0]		.14 [3.5]	.19 [4.7]	
YF1012UIL	8	10	.47 [12.0]	.43 [10.8]	.19 [4.9]	.14 [3.5]	.19 [4.7]	
YF1015UIL			.59 [15.0]	.55 [14.0]		.14 [3.5]	.19 [4.7]	
YF1018UIL			.71 [18.0]	.67 [17.0]		.14 [3.5]	.19 [4.7]	
YF0812UIL	6	16	.47 [12.0]	.41 [10.5]	.24 [6.2]	.18 [4.5]	.23 [5.8]	
YF0815UIL			.59 [15.0]	.54 [13.8]		.18 [4.5]	.23 [5.8]	
YF0818UIL			.71 [18.0]	.66 [16.8]		.18 [4.5]	.23 [5.8]	
YF0612UIL	4	25	.47 [12.0]	.39 [10.0]	.30 [7.7]	.23 [5.8]	.30 [7.5]	
YF0615UIL			.59 [15.0]	.53 [13.5]		.23 [5.8]	.30 [7.5]	
YF0618UIL			.71 [18.0]	.65 [16.5]		.23 [5.8]	.30 [7.5]	
YF0625UIL	350	185	.98 [25.0]	.93 [23.5]	.84 [21.0]	.23 [5.8]	.30 [7.5]	
YF0412UIL*			.47 [12.0]	.39 [10.0]		.29 [7.3]	.37 [9.5]	
YF0415UIL			.59 [15.0]	.51 [13.0]		.29 [7.3]	.37 [9.5]	

BURNDY CAT. NO.	AWG	mm ²	L1	L2	D	D1	D2	RECOMMENDED TOOLING	
YF0418UIL	4	25	.71 [18.0]	.63 [16.0]	.30 [7.7]	.29 [7.3]	.37 [9.5]	YF261CSKIT WITH YF864D DIE	
YF0420UIL			.79 [20.0]	.71 [18.0]		.29 [7.3]	.37 [9.5]		
YF0425UIL			.98 [25.0]	.91 [23.0]		.29 [7.3]	.37 [9.5]		
YF0432UIL			1.26 [32.0]	1.18 [30.0]		.29 [7.3]	.37 [9.5]		
YF0215UIL*	2	35	.59 [15.0]	.51 [13.0]	.34 [8.7]	.33 [8.3]	.41 [10.5]	YF261CSKIT WITH YF21D DIE	
YF0220UIL			.79 [20.0]	.71 [18.0]		.33 [8.3]	.41 [10.5]		
YF0225UIL			.98 [25.0]	.91 [23.0]		.33 [8.3]	.41 [10.5]		
YF0232UIL	1	50	1.26 [32.0]	1.18 [30.0]	.43 [10.9]	.33 [8.3]	.41 [10.5]	81KFT SERIES	
YF0118UIL*			.71 [18.0]	.59 [15.0]		.41 [10.3]	.51 [13.0]		
YF0122UIL*			.87 [22.0]	.75 [19.0]		.41 [10.3]	.51 [13.0]		
YF0125UIL*			.98 [25.0]	.87 [22.0]		.41 [10.3]	.51 [13.0]		
YF0132UIL*	1/0	50	1.26 [32.0]	1.14 [29.0]	.41 [10.3]	.51 [13.0]	.51 [13.0]		
YF1/018UIL			.71 [18.0]	.59 [15.0]		.41 [10.3]			.51 [13.0]
YF1/022UIL			.87 [22.0]	.75 [19.0]		.41 [10.3]			.51 [13.0]
YF1/025UIL	2/0	70	.98 [25.0]	.87 [22.0]	.56 [14.3]	.41 [10.3]	.51 [13.0]		
YF1/032UIL			1.26 [32.0]	1.14 [29.0]		.41 [10.3]	.51 [13.0]		
YF2/022UIL*			.87 [22.0]	.75 [19.0]		.53 [13.5]	.62 [15.8]		
YF2/025UIL*	3/0	95	.98 [25.0]	.87 [22.0]	.61 [15.5]	.53 [13.5]	.62 [15.8]		
YF2/032UIL*			1.26 [32.0]	1.14 [29.0]		.53 [13.5]	.62 [15.8]		
YF3/025UIL*			.98 [25.0]	.87 [22.0]		.58 [14.7]	.68 [17.3]		
YF3/030UIL*	4/0	120	1.18 [30.0]	1.06 [27.0]	.69 [17.6]	.58 [14.7]	.68 [17.3]		
YF3/032UIL*			1.26 [32.0]	1.14 [29.0]		.58 [14.7]	.68 [17.3]		
YF4/032UIL*			1.26 [32.0]	1.14 [29.0]		.66 [16.7]	.80 [20.2]		
YF4/034UIL*	250	150	1.34 [34.0]	1.22 [31.0]	.81 [20.5]	.66 [16.7]	.80 [20.2]		
YF4/040UIL*			1.57 [40.0]	1.46 [37.0]		.66 [16.7]	.80 [20.2]		
YF25032UIL*			1.26 [32.0]	1.14 [29.0]		.77 [19.5]	.91 [23.0]		
YF25040UIL*	350	185	1.57 [40.0]	1.46 [37.0]	.80 [20.2]	.77 [19.5]	.91 [23.0]		
YF35032UIL*			1.26 [32.0]	1.14 [29.0]		.80 [20.2]	.94 [23.9]		
YF35040UIL*			1.57 [40.0]	1.46 [37.0]		.80 [20.2]	.94 [23.9]		

REV	DATE	DESCRIPTION	EC	BY	C'H'K.
A	04/05/2021	NEW DRAWING CREATION	Z10405006822	SS	WP



- NOTES:
1. MATERIAL: COPPER.
 2. FINISH : TIN PLATED
 3. DIMENSIONS IN BRACKETS [] ARE IN MILLIMETERS ROUNDED OFF TO THE NEAREST MILLIMETER, UNLESS OTHERWISE SPECIFIED AND ARE FOR REFERENCE ONLY.
 4. UL LISTED BARE AND COVERED FERRULES PER UL486F REQUIREMENTS.
 5. ITEMS WITH CATALOG NUMBERS FOLLOWED BY ASTERISKS (*) ARE NOT UL LISTED.

TO ORDER BURNDY® PRODUCTS CALL UNITED STATES 1-800-346-4175 (LONDONDERRY, NH) CANADA: 1-800-387-6487 FOR PRODUCT INFO: http://www.burndy.com	UNINSULATED FERRULES	
	ITEM NO: SEE TABLE	
	CAT. NO: SEE TABLE	
	DRAWN BY: M.SAURABH 12/07/2020 CHECKER: K.HERNANDEZ 10/18/2022 DSN APRVL: K.HERNANDEZ 10/18/2022 MFG APRVL: -- QA APRVL: J.BRODEUR 05/10/2021 MKT APRVL: A.FITZGER 05/12/2021	
	PROJECT #: -- DOCUMENT TYPE: SALES REL LEVEL: Released	SIZE D
DRAWING NO 50111874		REV A
SHEET 1 OF 1		