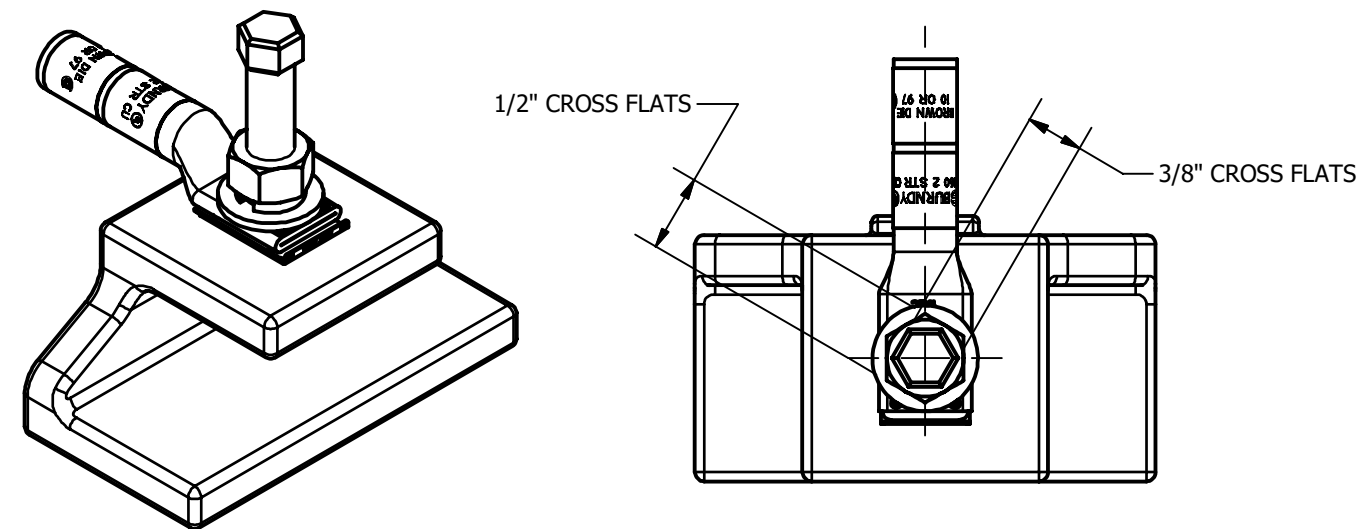
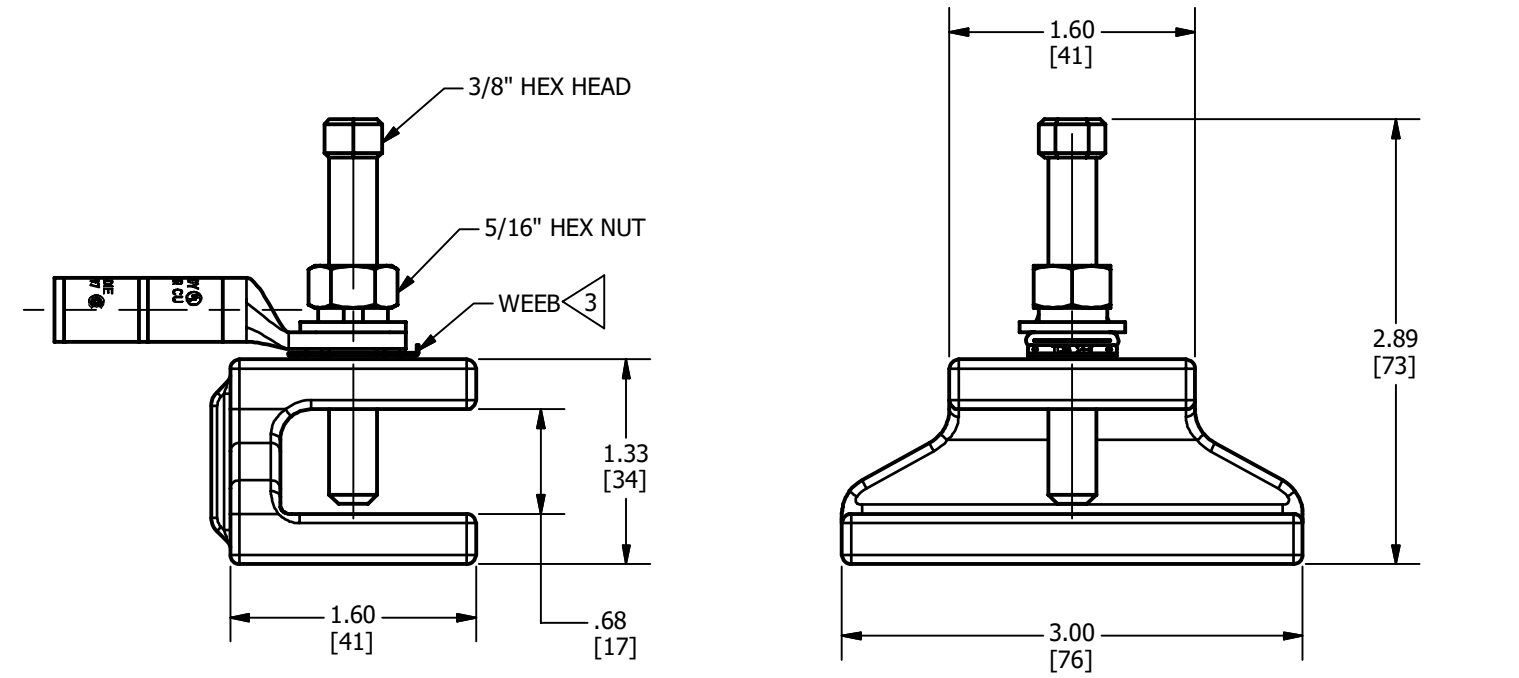


| CATALOG NUMBER | WIRE SIZE | RECOMMENDED BOLT TORQUE (IN-LB) | RECOMMENDED NUT TORQUE (IN-LB) | WEEB CATALOG NUMBER | LUG INSTALLATION TOOLING | | | | | | WIRE STRIP LENGTH | |
|----------------|-----------|---------------------------------|--------------------------------|---------------------|---|---------------------------------------|---------------------------------------|-----------------------------|-------|------------|-------------------|-----------|
| | | | | | DIELESS (# OF CRIMPS) | MECHANICAL | | HYDRAULIC | | COLOR CODE | | DIE INDEX |
| | | | | | | MD6, OUR840, MD7-34R | BCT500HS, Y500CHS | Y35, Y39, Y750, Y46, PAR750 | | | | |
| GCSYA8CWEEB | #8 AWG | 100 | 180 | WEEB-TC38 | Y122CMR(2) MRC840 (2) MY29-3 (2) MY29-11 (2) Y8MBR-1 (1) Y1MRTC (2) Y81KFT (1) PAT81KFT (1) | W8CVT (2) W8CRT (2) X8CRT (2) | W8CVT (2) W8CRT (2) X8CRT (2) | U8CRT (2) | RED | 49 | 7/8 | |
| GCSYA6CWEEB | #6 AWG | | | | Y122CMR(2) MRC840 (2) MY29-3 (2) MY29-11 (2) Y644HSXT (1) Y1MRTC (2) Y81KFT (1) PAT81KFT (1) | W5CVT (2) W5CRT (2) X5CRT (2) | W5CVT (2) W5CRT (2) X5CRT (2) | U5CRT (2) U8CABT (2) | BLUE | 7 OR 374 | 1-3/16 | |
| GCSYA4CWEEB | #4 AWG | | | | Y122CMR(4) MY29-3 (2) MY29-11 (2) Y644HSXT (1) | W4CVT (2) W4CRT (2) X4CRT (2) | W4CVT (2) W4CRT (2) X4CRT (2) | U4CRT (2) U6CABT (2) | GRAY | 8 OR 346 | 1-3/16 | |
| GCSYA3CWEEB | #3 AWG | | | | Y644HSXT (1) Y1MRTC (4) Y81KFT (2) PAT81KFT (2) | W3CRT (2) | W3CRT (2) | U3CRT (2) | WHITE | 9 | 1-5/16 | |
| GCSYA2CWEEB | #2 AWG | | | | W2CVT (2) W2CRT (2) X2CRT (2) | W2CVT (2) W2CRT (2) X2CRT (2) | U2CRT (2) | BROWN | 10 | 1-5/16 | | |
| GCSYA1CWEEB | #1 AWG | | | | MRC840 (2) MY29-3 (2) MY29-11 (2) Y644HSXT (1) Y1MRTC (4) Y81KFT (2) PAT81KFT (2) | W1CVT (2) W1CRT1 (2) X1CRT1 (2) | W1CVT (2) W1CRT1 (2) X1CRT1 (2) | U1CRT1 (2) U4CABT (2) | GREEN | 11 | 1-7/16 | |
| GCSYA25WEEB | 1/0 AWG | | | | MRC840 (4) MY29-3 (2) MY29-11 (2) Y644HSXT (1) | W25VT (4) W25RT (4) X25RT (4) | W25VT (4) W25RT (4) X25RT (4) | U25RT (2) U2CABT (2) | PINK | 12 | 1-7/16 | |
| GCSYA26WEEB | 2/0 AWG | | | | Y81KFT (2) Y81KFTMBH (2) PAT81KFT-18V (2) | W26VT (4) W26RT (4) X26RT (4) | W26VT (4) W26RT (4) X26RT (4) | U26RT (2) | BLACK | 13 | 1-9/16 | |

| REV | DATE | DESCRIPTION | ECO | BY | C'H'K. |
|-----|------------|------------------|--------------|----|--------|
| A | 08/31/2021 | DRAWING RELEASED | 210831011818 | PB | RG |



NOTES:

- DIMENSIONS IN BRACKETS [] ARE IN MILLIMETERS ROUNDED OFF TO THE NEAREST MILLIMETER, UNLESS OTHERWISE SPECIFIED AND ARE FOR REFERENCE ONLY.
- MATERIAL: CLAMP BODY: CAST COPPER ALLOY
HYLUG : COPPER - TIN PLATED
HARDWARE: STAINLESS STEEL
- 304 STAINLESS STEEL ANTI-ROTATIONAL BONDING WASHER.
- cULus LISTED TO GROUNDING AND BONDING EQUIPMENT STANDARD.
- ACCOMODATES STEEL 1/8" TO 5/8" THICK.

TO ORDER BURNDY® PRODUCTS CALL

UNITED STATES
1-800-346-4175 (LONDONDERRY, NH)

CANADA:
1-800-387-6487

FOR PRODUCT INFO: <http://www.burndy.com>

HYLUG TO STEEL

ITEM NO: --
CAT. NO: GCSYA--WEEB (SEE TABLE)

DRAWN BY: B.PARTHIBAN 08/18/2020
CHECKER: S.CARBONNEAU 11/03/2021
DSN APRVL: S.CARBONNEAU 11/03/2021
MFG APRVL: E.VARGAS 09/03/2021
QA APRVL: G.REDFIELD 09/01/2021
MKT APRVL: S.PARSONS 09/02/2021



| | | |
|----------------------|--------------|-----|
| PROD FAM: -- | DRAWING NO | REV |
| PROJECT #: -- | 50114559 | A |
| DOCUMENT TYPE: SALES | SIZE | B |
| REL LEVEL: Released | SHEET 1 OF 1 | |