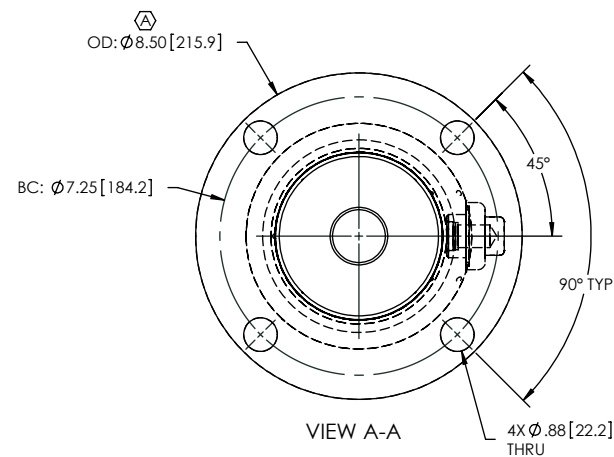
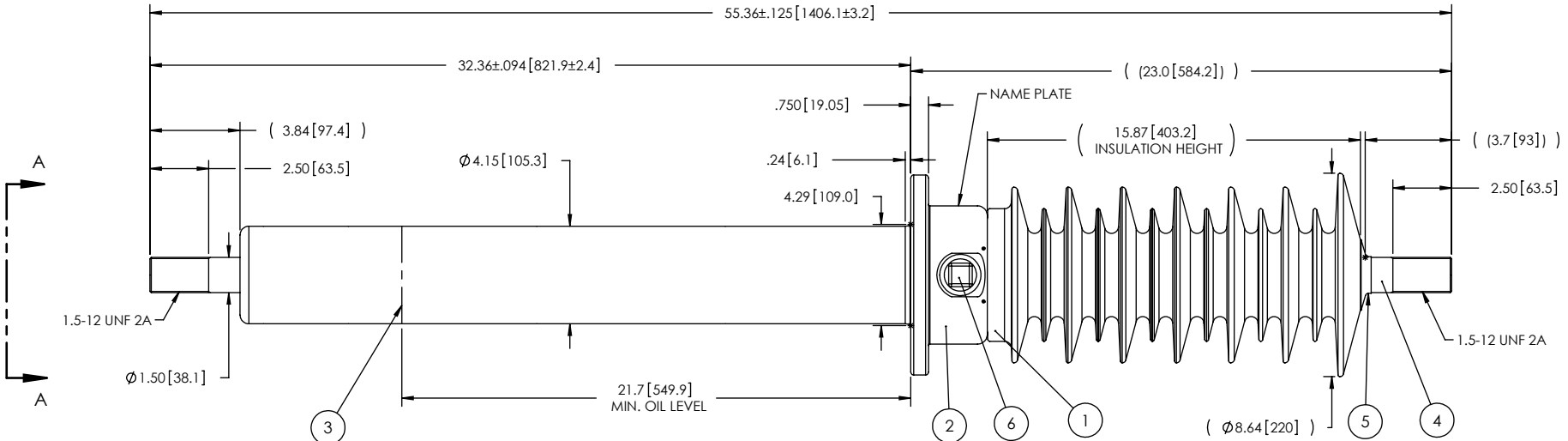


- NOTES:
- | | | |
|---|--------------------------------------|----------------------|
| 1 | CREEPAGE DISTANCE: | 47.35" / 1202.5mm |
| 2 | ARC DISTANCE: | 18.43" / 467.7mm |
| 3 | NOMINAL VOLTAGE: | 34.5kV |
| 4 | NOMINAL CURRENT: | 1200A |
| 5 | WITHSTAND VOLTAGE AT 60 sec.: | 95kV |
| 6 | B.I.L. : | 200kV |
| 7 | ROUTINE TEST ACCORDING TO: | CSA C88.1-96 |
| 8 | MAX. TORQUE APPLIED ON FLANGE BOLTS: | 40 lbf x ft |
| 9 | WEIGHT: | 81.83 lbs / 37.12 Kg |

REVISIONS					
ZONE	REV.	DESCRIPTION	DRAWN BY	DATE	APPR.
C6	A	THE FLANGE O.D. CHANGE FROM Ø8.75" TO Ø8.50"	J. CLICHE	2012/01/03	Y.V.



ITEM NO.	QTY	DRAWING NO.	PART NO.	DESCRIPTION	NOTE / MATL
6	1	S-1001-2022		CAPACITANCE TAP ASSEMBLY	ALUMINUM
5	1	S-1001-0007		CAP	COPPER
4	1	S-5674-5611		ROD ASSEMBLY	COPPER
3	1	S-5674-5610		SHIELD ASSEMBLY	COPPER
2	1	S-5362-5018		FLANGE	ALUMINUM
1	1	S-5674-5609		CASTING, CYCLOALIPHATIC RESIN	EC-APG-02
PARTS LIST					

GENERAL TOLERANCES (UNLESS OTHERWISE SPECIFIED)		Electro Composites solid HV bushings solution		TITLE:	
X.	±0.125			BUSHING 34.5kV, 1200A	
.X	±0.094	MODEL: 200-012-T-502-00		REVISION	
.XX	±0.063	DRAWN BY:	J.N.PILOTTE	DATE:	2009/10/23
.XXX	±0.010	CHECK BY:		FORMAT:	A
ANGLES	±0.25°	PROJECT ENG.:		CAGE CODE:	
RADIUS	±0.031	PROJECT MANAGER:		DRAWING NO.:	S-5674-5609
REMOVE BURRS AND BREAK SHARP EDGES		SCALE:		GENERATED BY:	SolidWorks 2009
DIMENSIONS ARE IN INCHES (UNLESS OTHERWISE SPECIFIED)		1:7		SHEET:	1 of 1

This drawing is the proprietary property of Electro Composites (2008) ULC, not part of the public domain, and is issued with the express understanding and agreement that it is not to be reproduced or copied in whole or in part or issued for furnishing information to others, or used directly or indirectly, in any way detrimental to the interest of Electro Composites (2008) ULC and is to be returned upon request by Electro Composites (2008) ULC. All Rights Reserved.