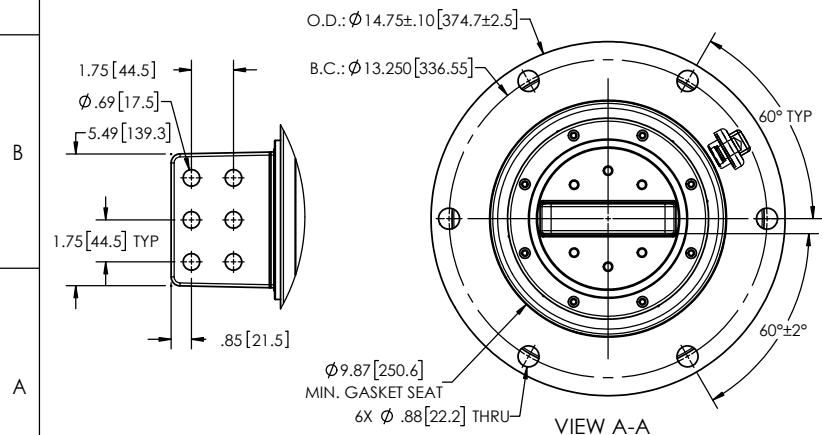
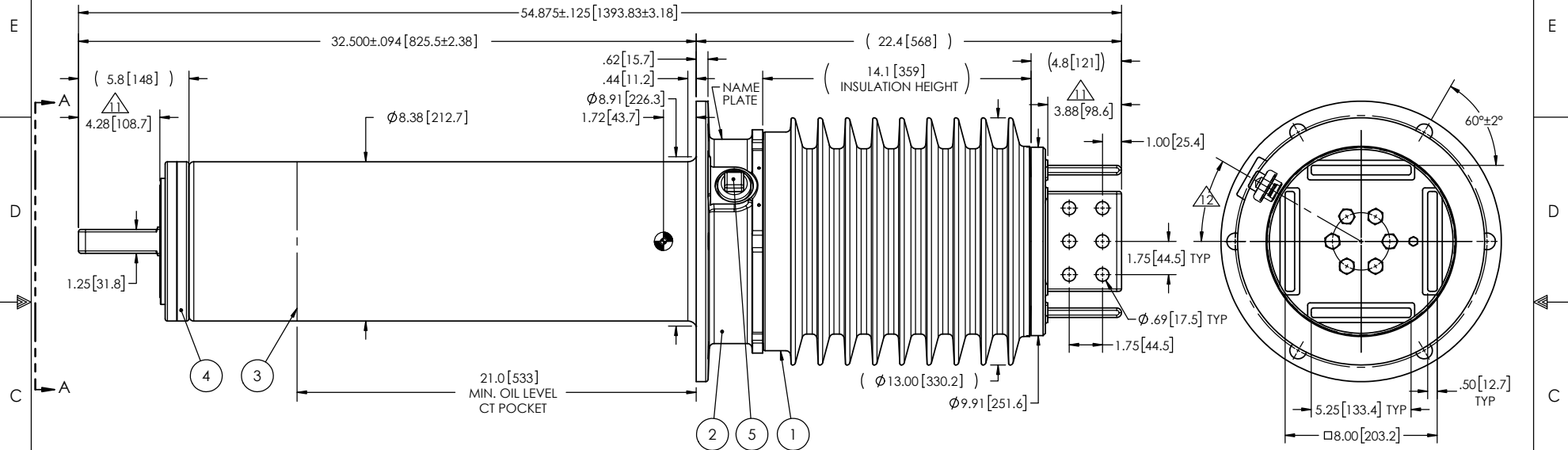


REVISIONS					
ZONE	REV.	DESCRIPTION	DRAWN BY	DATE	APPR.
F4	NR	ADD THE SILVER PLATING + ADD THE NOTE #11 & #12.	J. CLICHE	2011/11/23	Y.V.
F5 B4 B5, B6	A	TAKE OFF THE NOTE: "DO NOT STORE TO SUNLIGHT (UV)" THE MATERIAL OF THE CASTING BECOMES: "EC-APG-15 NA" ADD THE ANGULAR ORIENTATION OF THE TOP & BOTTOM SPADES	J. CLICHE	2013-01-23	Y.V.
B4	B	DESCRIPTION OF ITEM # 1 HAS CHANGED: "BISPHENOL" BECOMES "CYCLOALIPHATIC"	A.SAVARD	2016-02-10	Y.V.
F4 A4 E4	C	ADD THE NOTE #12: CAPACITANCE TAP ORIENTATION. ADD THE MINIMUM GASKET SEAT DIMENSION. ADD THE MAXIMUM DIAMETER OF THE LOWER CASTING.	J. CLICHE	2017-11-16	Y.V.
F6	D	UPDATE NOTE #10	M. FORGET	2022-04-25	Y.V.

- NOTES:
- 1 CREEPAGE DISTANCE: 37.0" / 940mm
  - 2 ARC DISTANCE: 15.0" / 381mm
  - 3 NOMINAL VOLTAGE: 25kV
  - 4 NOMINAL CURRENT: 7500A
  - 5 VOLTAGE WITHSTAND, 60 sec.: 60kV
  - 6 BIL : 150kV
  - 7 ROUTINE TEST ACCORDING TO: IEEE C57.19.01
  - 8 MAX. TORQUE APPLIED ON FLANGE BOLTS: 70 lbf·ft / 94.9 N·m
  - 9 WEIGHT: 309 lb / 140.1 kg
  - 10 INSULATION THERMAL LIMIT: 130°C. BUSHING RATED PER IEEE C57.19.04 USUAL SERVICE CONDITIONS.
- △ SILVER PLATED, AS PER ASTM B700, TYPE 1, GRADE D, CLASS N, NO NICKEL LAYER, FROM 13 TO 20 MICROMETERS THICKNESS
- △ THE CAPACITANCE TAP ORIENTATION CAN BE DIFFERENT FROM THE DRAWING.



ITEM NO.	QTY	DRAWING NO.	PART NO.	DESCRIPTION	NOTE / MAT'L
5	1	S-1001-2022		CAPACITANCE TAP ASSEMBLY	ALUMINUM
4	1	S-5955-5579		TUBE ASSEMBLY	COPPER
3	1	S-5955-5578		SHIELD ASSEMBLY	BRASS
2	1	S-5955-5577		FLANGE	ALUMINUM
1	1	S-5955-5576	-001	CASTING, CYCLOALOPHATIC RESIN	EC-APG-15NA

**PARTS LIST**

GENERAL TOLERANCES (UNLESS OTHERWISE SPECIFIED)		<b>Electro Composites</b> <b>solid HV bushings solution</b>	
X.	±0.125		
.X	±0.094	TITLE: SDC® GSU BUSHING 25kV, 7,500A MODEL: 150-075-G-507-00	
.XX	±0.063	DRAWN BY: J. CLICHE	DATE: 2010/07/19
.XXX	±0.031	CHECK BY:	
ANGLES	±0.25°	PROJECT NO.:	
RADIUS	±0.031	PROJECT MANAGER:	
REMOVE BURRS AND BREAK SHARP EDGES		SCALE: 1:8	GENERATED BY: SolidWorks 2021
DIMENSIONS ARE IN INCHES (UNLESS OTHERWISE SPECIFIED)		FORMAT: A	CAGE CODE: S-5955-5576
		DRAWING NO.:	REVISION: D
		SHEET: 1 of 1	

This drawing is the proprietary property of Electro Composites (2008) ULC, not part of the public domain, and is issued with the express understanding and agreement that it is not to be reproduced or copied in whole or in part or issued for furnishing information to others, or used directly or indirectly, in any way detrimental to the interest of Electro Composites (2008) ULC and is to be returned upon request by Electro Composites (2008) ULC. All Rights Reserved.