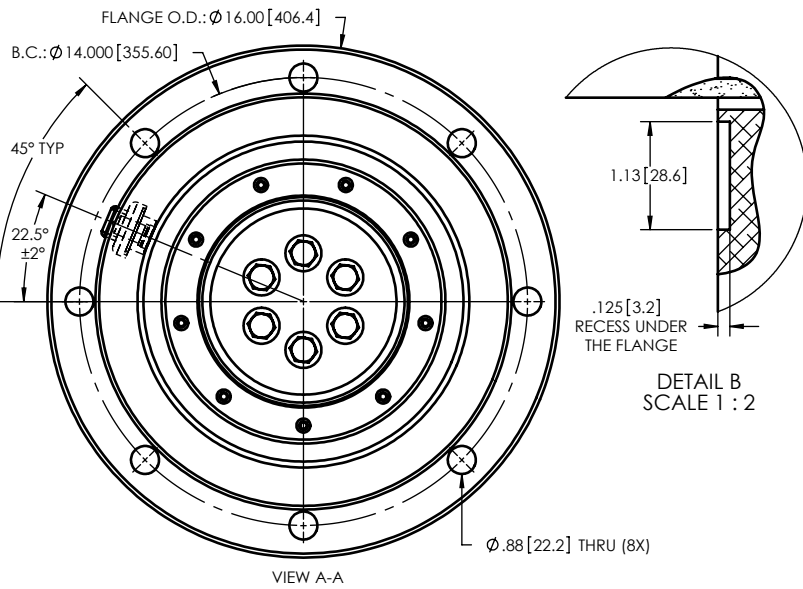
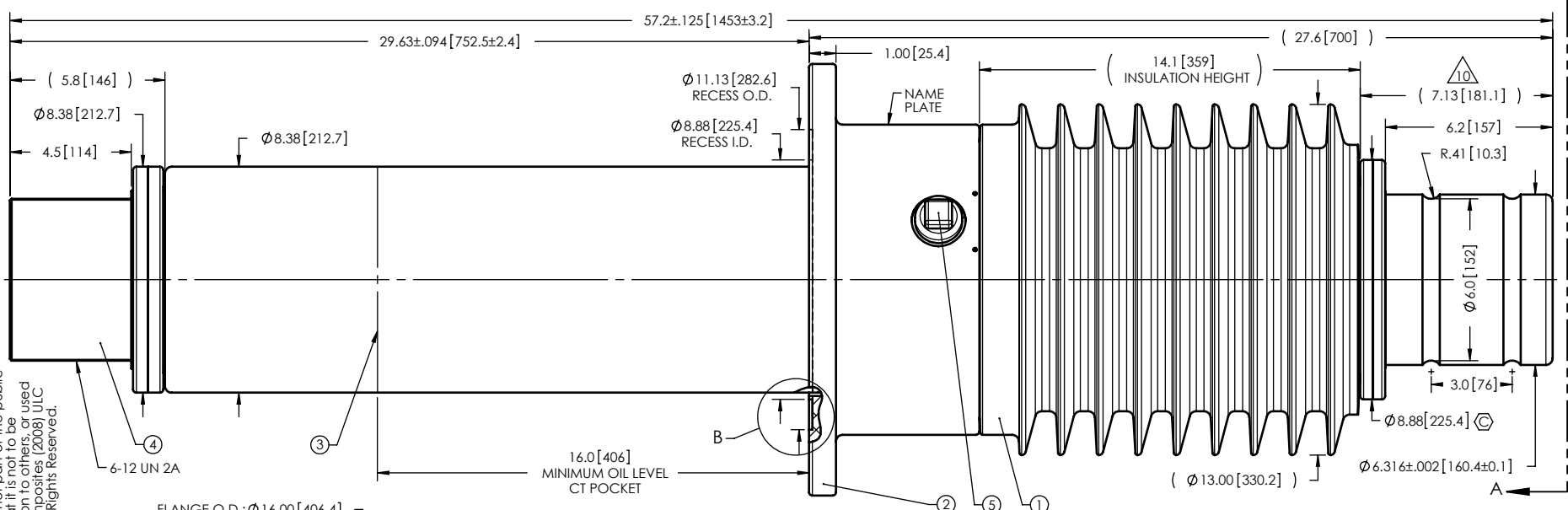


- NOTES:
- 1 CREEPAGE DISTANCE: 38.5" / 978mm
 - 2 ARC DISTANCE: 16.8" / 427mm
 - 3 NOMINAL VOLTAGE: 25kV
 - 4 NOMINAL CURRENT: 6.000A
 - 5 WITHSTAND VOLTAGE AT 60 sec.: 60kV
 - 6 B.I.L. : 150kV
 - 7 ROUTINE TEST ACCORDING TO: IEEE C57.19.01
 - 8 MAX. TORQUE APPLIED ON FLANGE BOLTS: 70 lbf x ft
 - 9 WEIGHT: 378 lb / 171.5 Kg
 - 10 SILVER PLATED AIR END, AS PER ASTM B700, TYPE 1, GRADE D, CLASS N, NO NICKEL LAYER, FROM 13 TO 20 MICROMETERS THICKNESS
 - 11 DO NOT STORE OR INSTALL BUSHING DIRECTLY EXPOSED TO SUNLIGHT (UV).

REVISIONS					
ZONE	REV.	DESCRIPTION	DRAWN BY	DATE	APPR.
E6	A	ADD A SEALING GROOVE UNDER THE CASTING	J. CLICHE	2011/03/01	J.V.
E4	B	INNER DIAMETER OF THE RECESS UNDER THE FLANGE CHANGE FOR Ø8.88"	J. CLICHE	2011/07/15	Y.V.
C1	C	THE DIAMETER AND THE TYPE OF SEALING RING CHANGE	J. CLICHE	2013-05-02	Y.V.



ITEM NO.	QTY	DRAWING NO.	PART NO.	DESCRIPTION	NOTE / MATL
5	1	S-1001-2022		CAPACITANCE TAP ASSEMBLY	ALUMINUM
4	1	S-6609-6360		ROD ASSEMBLY	COPPER
3	1	S-6609-6359		SHIELD ASSEMBLY	BRASS
2	1	S-6609-6358		FLANGE	ALUMINUM
1	1	S-6609-6357	-001	CASTING, BISPHENOL RESIN	EC-APG-15

PARTS LIST

GENERAL TOLERANCES (UNLESS OTHERWISE SPECIFIED)		Electro Composites solid HV bushings solution	
X.	±0.125		
.X	±0.094	TITLE: SDC® GSU BUSHING 25kV, 6,000A MODEL: 150-060-G-507-01	
.XX	±0.063	FORMAT: A	CAGE CODE
.XXX	±0.031	DRAWING NO.: S-6609-6357	
ANGLES	±0.25°	REVISION: C	
RADIUS	±0.031	SCALE: 1:6	GENERATED BY: SolidWorks 2012
REMOVE BURRS AND BREAK SHARP EDGES		SHEET: 1 of 1	
DIMENSIONS ARE IN INCHES (UNLESS OTHERWISE SPECIFIED)			

This drawing is the proprietary property of Electro Composites (2008) ULC, not part of the public domain, and is issued with the express understanding and agreement that it is not to be reproduced or copied in whole or in part or issued for furnishing information to others, used directly or indirectly, in any way detrimental to the interest of Electro Composites (2008) ULC and is to be returned upon request by Electro Composites (2008) ULC. All Rights Reserved.