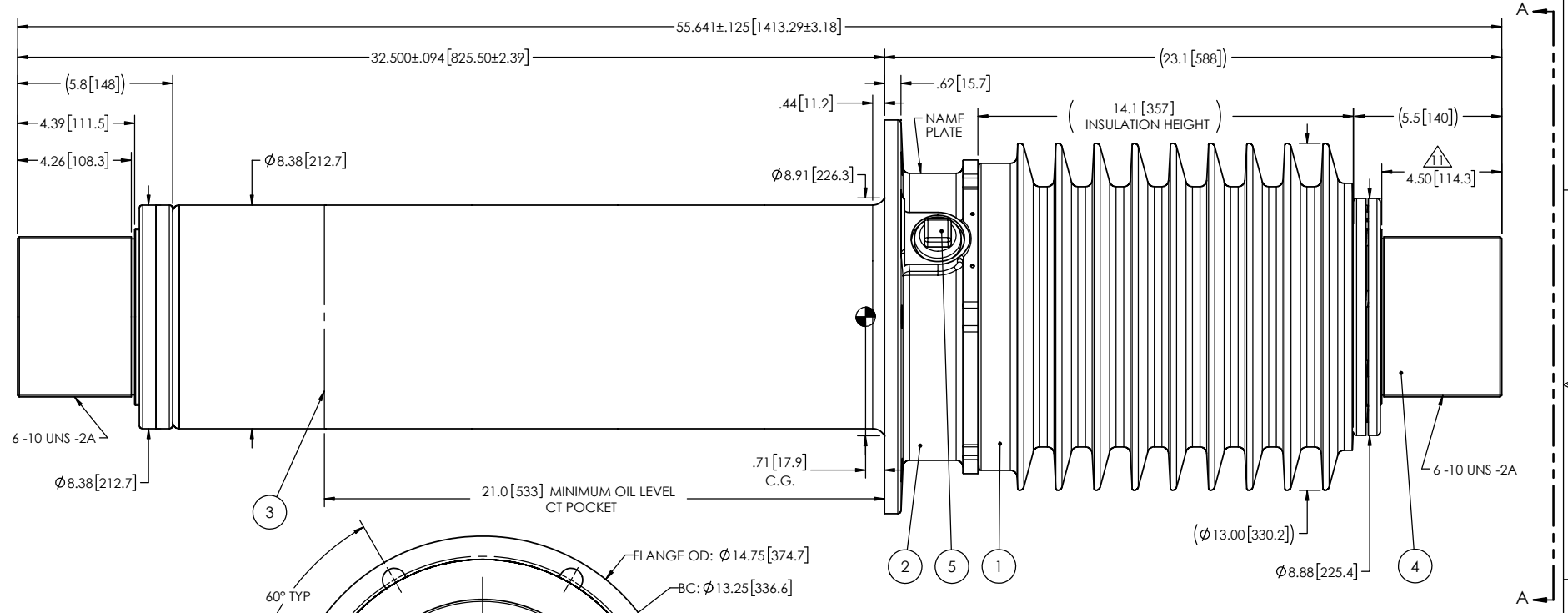


- NOTES:
- 1 CREEPAGE DISTANCE: 37.3" / 947mm
  - 2 ARC DISTANCE: 15.7" / 399mm
  - 3 NOMINAL VOLTAGE: 27.5kV
  - 4 NOMINAL CURRENT: 6,500A
  - 5 VOLTAGE WITHSTAND, 60 sec.: 70kV
  - 6 BIL: 150kV
  - 7 ROUTINE TEST ACCORDING TO: CSA C88.1-96
  - 8 MAX. TORQUE APPLIED ON FLANGE BOLTS: 70 lbf·ft / 94.9 N·m
  - 9 WEIGHT: 349 lb / 158.3 Kg
  - 10 INSULATION THERMAL LIMIT: 130°C. BUSHING RATED PER CSA C88.1 USUAL SERVICE CONDITIONS.
- ⚠ SILVER PLATED, AS PER ASTM B700, TYPE 1, GRADE D, CLASS N, NO NICKEL LAYER, FROM 13 TO 20 MICROMETERS THICKNESS

| REVISIONS |      |  |           |            |       |
|-----------|------|--|-----------|------------|-------|
| ZONE      | REV. | DESCRIPTION  | DRAWN BY  | DATE       | APPR. |
| C1, C6    | A    | THE THREADS OF THE 2 TERMINALS CHANGE FROM 6-12 TO 6-10 UNS-2A | J. CLICHE | 2016-06-06 | Y.V.  |
| F6        | B    | UPDATE NOTE #10  | M. FORGET | 2022-07-11 | Y.V.  |



| ITEM NO. | QTY | DRAWING NO. | PART NO. | DESCRIPTION                   | NOTE / MAT'L |
|----------|-----|-------------|----------|-------------------------------|--------------|
| 5        | 1   | S-1001-2022 |          | CAPACITANCE TAP ASSEMBLY      | ALUMINUM     |
| 4        | 1   | S-8060-3135 |          | TUBE ASSEMBLY                 | COPPER       |
| 3        | 1   | S-5955-5578 |          | SHIELD ASSEMBLY               | BRASS        |
| 2        | 1   | S-5955-5577 |          | FLANGE                        | ALUMINUM     |
| 1        | 1   | S-8060-3134 | -001     | CASTING, CYCLOALIPHATIC RESIN | EC-APG-15NA  |

**Electro Composites**  
solid HV bushings solution

TITLE: SDC® GSU BUSHING 27.5kV, 6,500A  
MODEL: 150-065-G-507-02

REVISION: B

SCALE: 1:6

GENERATED BY: SolidWorks 2021

SHEET: 1 of 1

GENERAL TOLERANCES (UNLESS OTHERWISE SPECIFIED):  
 X. ±0.125  
 .X ±0.094  
 .XX ±0.063  
 .XXX ±0.031  
 ANGLES ±0.25°  
 RADIUS ±0.031

REMOVE BURRS AND BREAK SHARP EDGES

DIMENSIONS ARE IN INCHES (UNLESS OTHERWISE SPECIFIED)

DRAWN BY: J. CLICHE DATE: 2016/05/10

CHECK BY: PROJECT ENG.: PROJECT MANAGER:

This drawing is the proprietary property of Electro Composites (2008) ULC, not part of the public domain, and is issued with the express understanding and agreement that it is not to be reproduced or copied in whole or in part or issued for furnishing information to others, or used directly or indirectly, in any way detrimental to the interest of Electro Composites (2008) ULC and is to be returned upon request by Electro Composites (2008) ULC. All Rights Reserved.

VIEW A-A