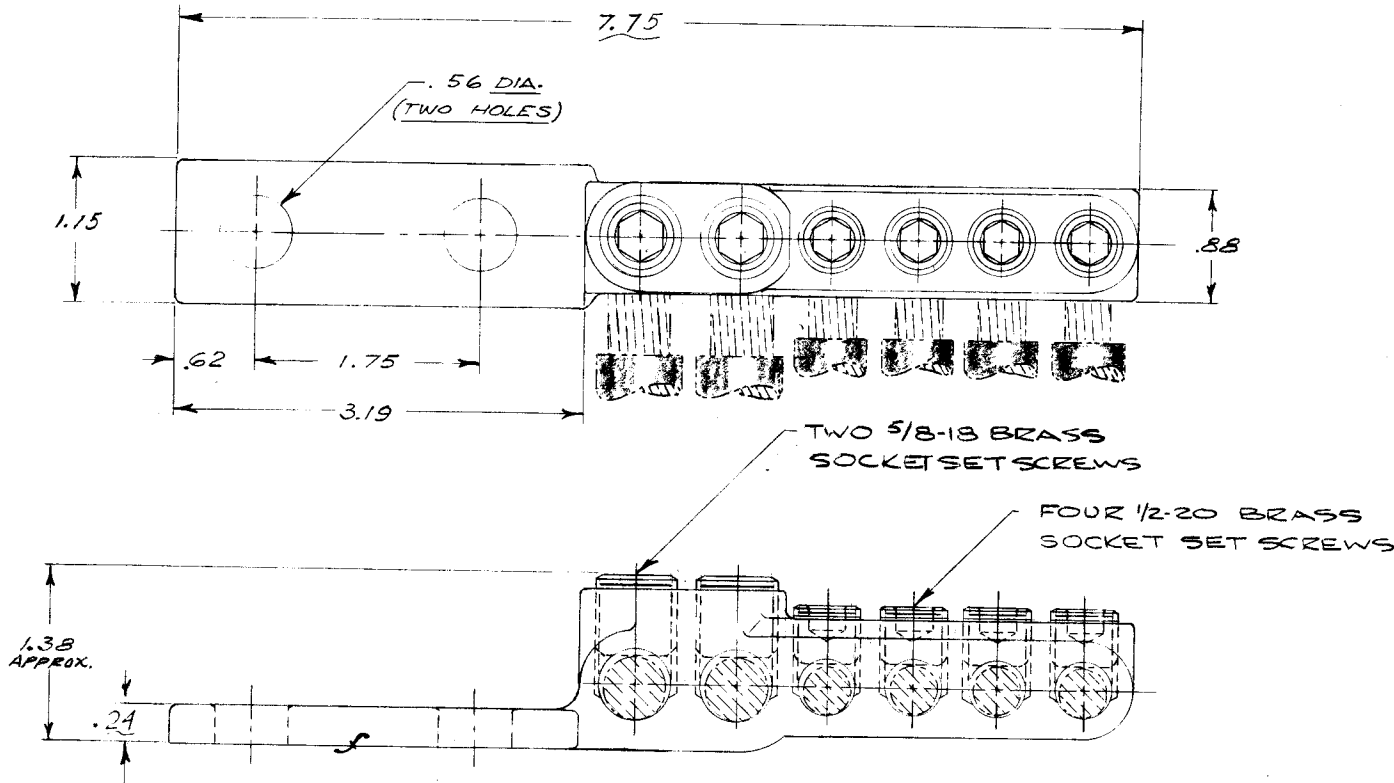


09805CS

09805CS

REV.	DATE	REVISION DESCRIPTION	BY	CHK'D.
1	1-22-64	CAT. NO. WAS K6 B2B G1 APP. RST 4A-64 (EC17769)	M.A.P.	ERD
2	12-7-65	REV. REF. PRINT (EC32560)	H.C.	MJM
3	2-4-66	SET SCREWS WERE STEEL (EC32818)	ERD	ERD



MATERIAL:

CAST COPPER ALLOY

ACCOMMODATES:

LARGE GROOVE: #6 (.184) - 4/0 (.528) CU. CABLE

SMALL GROOVE: #6 (.184) - 2/0 (.418) CU. CABLE

REFERENCE:

FC 49400

MULTIPLE LUG	
CAT. NO. K6B2B26-2N	SCALE FULL SIZE
DRAWN 1-29-62 M.A.P.	CHECKED ERD 1-29-62
DES. APPROV. <i>ERD</i> 2-7-62	
PROD. APPROV.	
DRAWING NO.	REV.
SC50860	3
D.O. 30274	

F.D. 418/528