
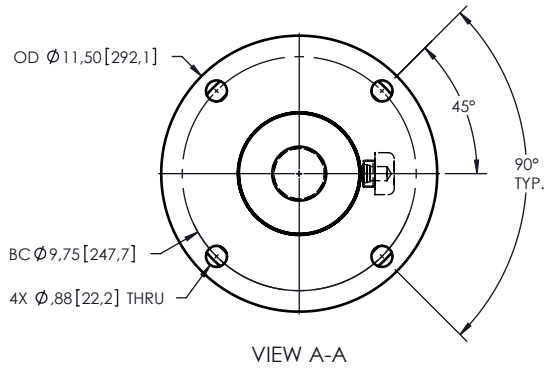
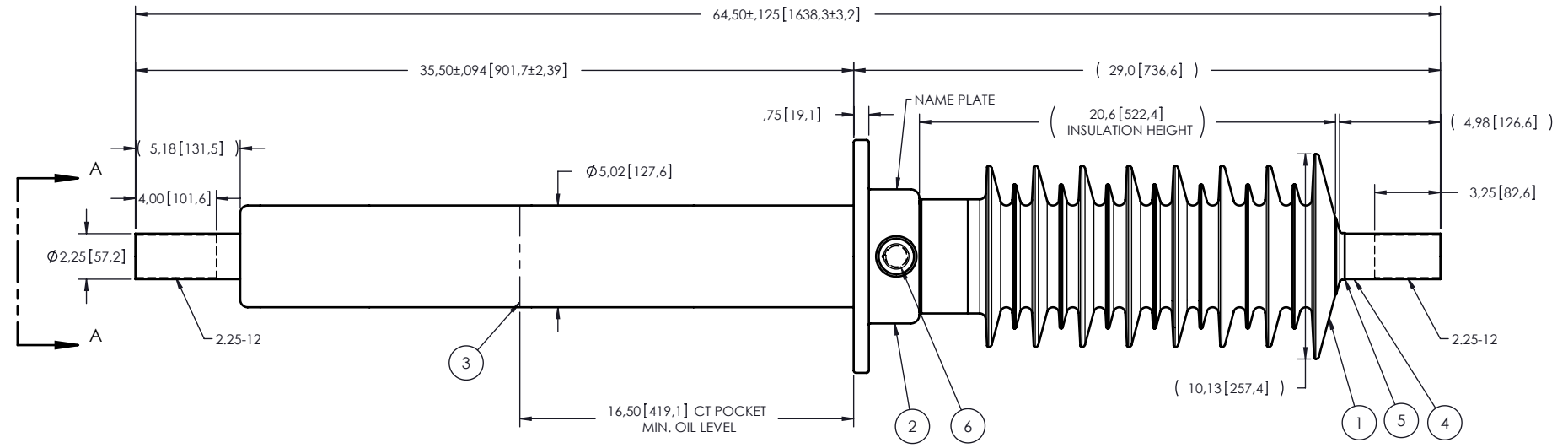


- NOTES:
- 1 CREEPAGE DISTANCE: 57.91" / 1471mm
  - 2 ARC DISTANCE: 23.33" / 593mm
  - 3 NOMINAL VOLTAGE: 46KV
  - 4 NOMINAL CURRENT: 2000A
  - 5 WITHSTAND VOLTAGE AT 60 sec.: 105kV 
  - 6 B.I.L. : 250kV
  - 7 ROUTINE TEST ACCORDING TO: IEEE-C57.19.01
  - 8 MAX. TORQUE APPLIED ON FLANGE BOLTS: 40 lbf x ft
  - 9 WEIGHT: 164.99 lbs / 74.83 Kg

REVISIONS					
ZONE	REV.	DESCRIPTION	DATE	DRAWN BY	APPR
	A	WITHSTAND VOLTAGE BECOMES 105KV	2010-01-04	A.SAVARD	J.VANIER



6	1	S-1001-2022		CAPACITANCE TAP ASSEMBLY	ALUMINUM
5	1	S-5980-5647		CAP	COPPER
4	1	S-5980-5644		ROD ASSEMBLY	COPPER
3	1	S-5980-5645		SHIELD ASSEMBLY	COPPER
2	1	S-5980-5646		FLANGE	ALUMINUM
1	1	S-5980-5643		CASTING, CYCLOALIPHATIC RESIN	EC-APG-02
ITEM NO.	QTY	DRAWING NO.	PART NO.	DESCRIPTION	NOTE / MAT'L

PARTS LIST					
GENERAL TOLERANCES (UNLESS OTHERWISE SPECIFIED)		REPLACE:		<b>ElectroComposites™</b> <b>solid HV bushings solution</b>	
X.	±0.125				
.X	±0.094			TITLE: BUSHING 46KV, 2000A MODEL: 250-020-T-516-00	
.XX	±0.063			DRAWING NO. S- 5980-5643	
.XXX	±0.010			REVISION A	
ANGLES	±0.1°			SCALE 1:8	
RADIUS	±0.031			GENERATED BY: SolidWorks 2009	
REMOVE BURRS AND BREAK SHARP EDGES		DRAWN BY: A.SAVARD		SHEET 1 of 1	
DIMENSIONS ARE IN INCHES (UNLESS OTHERWISE SPECIFIED)		DATE: 2009/11/24			
		CHECK BY:			
		PROJECT ENG.:			
		PROJECT MANAGER:			

This drawing is the proprietary property of Electro Composites (2008) ULC, not part of the public domain, and is issued with the express understanding and agreement that it is not to be reproduced or copied in whole or in part or issued for furnishing information to others, or used directly or indirectly, in any way detrimental to the interest of Electro Composites (2008) ULC and is to be returned upon request by Electro Composites (2008) ULC. All Rights Reserved.