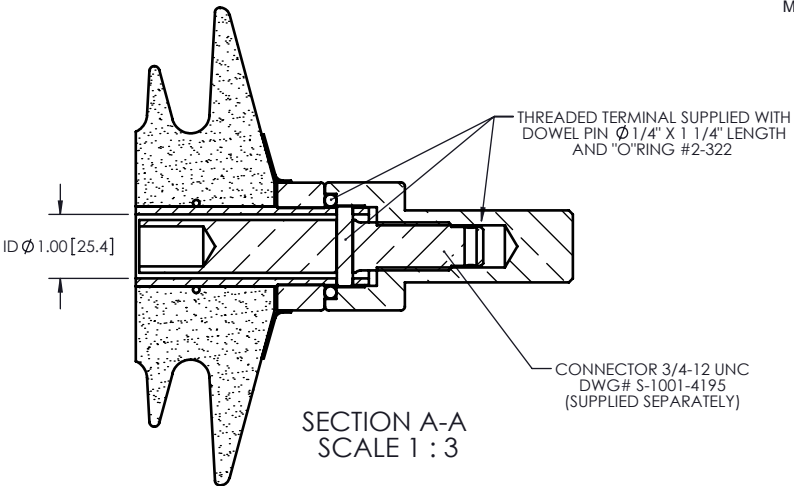
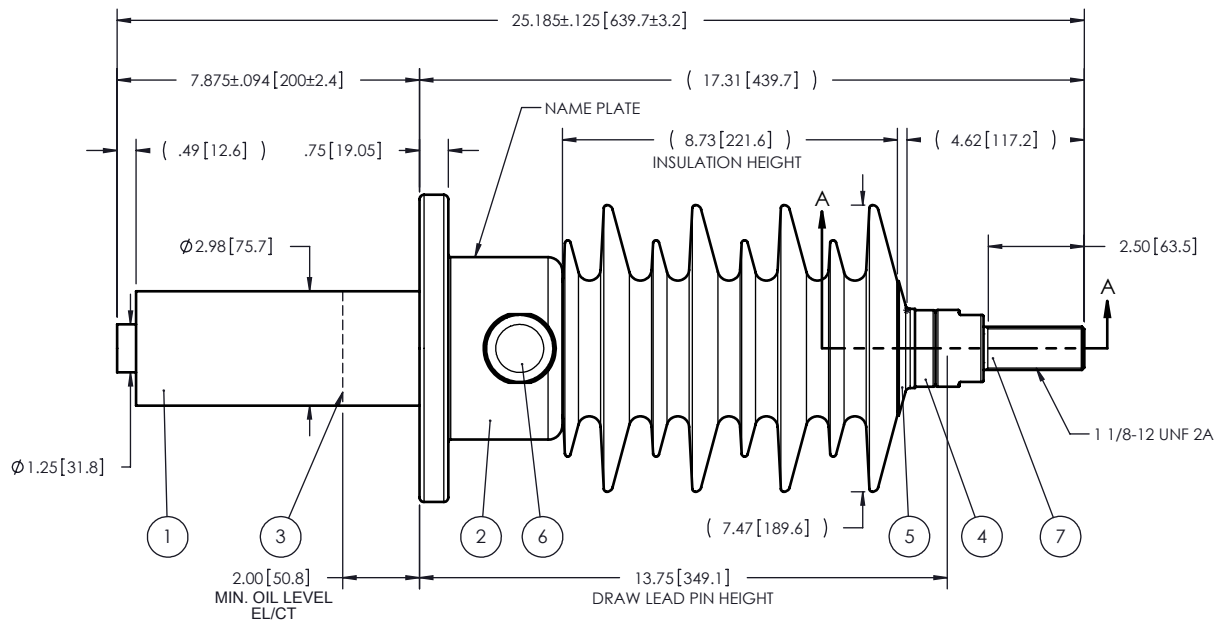
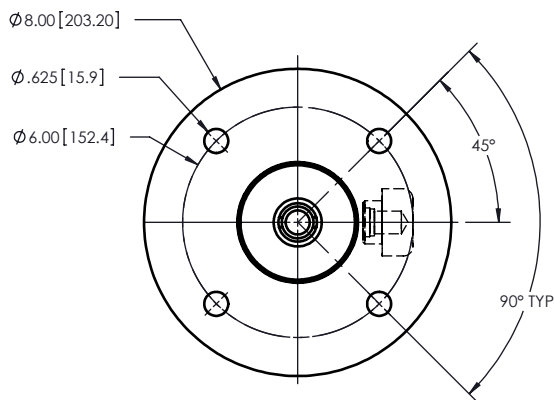


NOTES:

- 1 CREEPAGE DISTANCE: 27.5" / 699.7mm
- 2 ARC DISTANCE: 11.3" / 287.297mm
- 3 NOMINAL VOLTAGE: 25kV
- 4 NOMINAL CURRENT: 600A
- 5 WITHSTAND VOLTAGE AT 60 sec.: 60kV
- 6 B.I.L. : 150kV
- 7 ROUTINE TEST ACCORDANCE TO IEEE C57.19.01
- 8 MAX. TORQUE APPLIED ON FLANGE BOLTS: 40 lbf x ft
- 9 WEIGHT: 32.4 lbs / 14.7 Kg

ZONE		REV.	DESCRIPTION	DRAWN BY	DATE	APPR.
REVISIONS						



ITEM NO.	QTY	DRAWING NO.	PART NO.	DESCRIPTION	NOTE / MATL
7	1	S-4904-4657-0		THREADED TERMINAL KIT	COPPER
6	1	S-1001-2022		CAPACITANCE TAP ASSEMBLY	ALUMINUM
5	1	S-1344-0162		CAP	COPPER
4	1	S-6042-5695		ROD ASSEMBLY	COPPER
3	1	S-6042-5694		SHIELD ASSEMBLY	COPPER
2	1	S-6042-5693		FLANGE	ALUMINUM
1	1	S-6042-5692		CASTING, CYCLOALIPHATIC RESIN	EC-APG-02

PARTS LIST

This drawing is the proprietary property of Electro Composites (2008) ULC, not part of the public domain, and is issued with the express understanding and agreement that it is not to be reproduced or copied in whole or in part or issued for furnishing information to others, or used directly or indirectly, in any way detrimental to the interest of Electro Composites (2008) ULC and is to be returned upon request by Electro Composites (2008) ULC. All Rights Reserved.

<p>GENERAL TOLERANCES (UNLESS OTHERWISE SPECIFIED)</p> <p>X. ±0.125 .X ±0.094 .XX ±0.063 .XXX ±0.010 ANGLES ±0.25° RADIUS ±0.031</p> <p>REMOVE BURRS AND BREAK SHARP EDGES</p> <p>DIMENSIONS ARE IN INCHES (UNLESS OTHERWISE SPECIFIED)</p>	REPLACE:	<p><b>Electro Composites™</b> <b>solid HV bushings solution</b></p>			
	<p>DRAWN BY: J.N.PILOTTE</p> <p>DATE: 2009/12/14</p> <p>CHECK BY:</p> <p>PROJECT ENG.:</p> <p>PROJECT MANAGER:</p>	<p>SCALE: 1:5</p> <p>GENERATED BY: SolidWorks 2009</p> <p>SHEET: 1 of 1</p>	<p>TITLE: BUSHING 25kV, 600A MODEL: 150-006-T-532-00</p>		<p>FORMAT: A</p> <p>CAGE CODE:</p> <p>DRAWING NO.: S-6042-5692</p> <p>REVISION: NR</p>