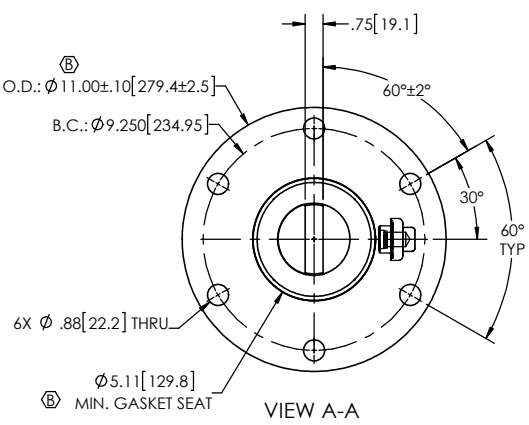
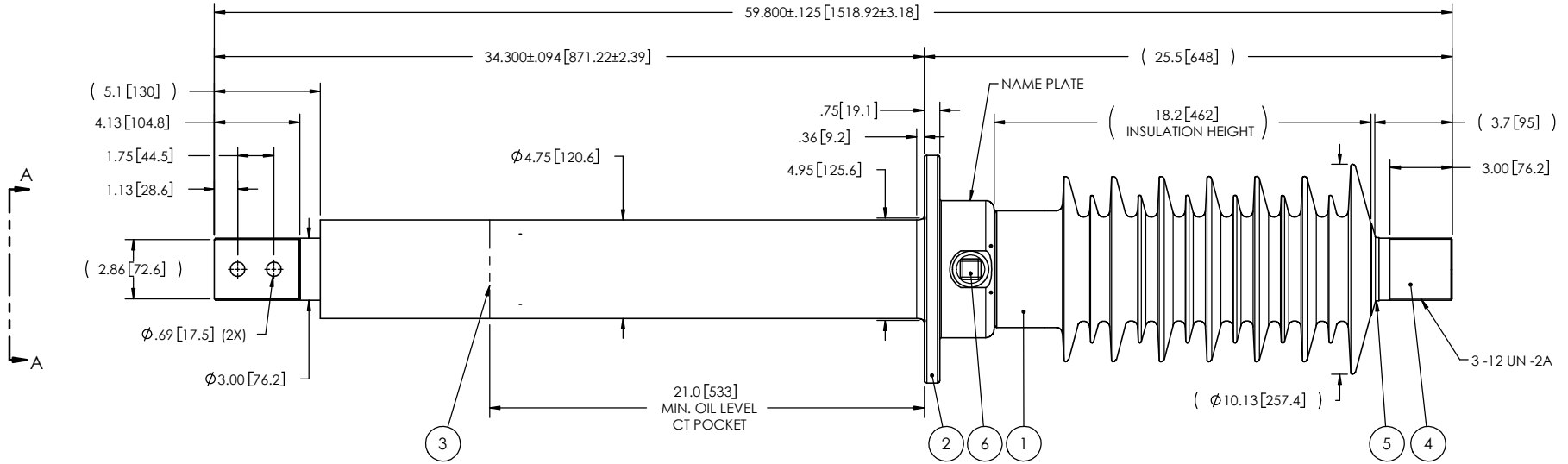


- NOTES:
- 1 CREEPAGE DISTANCE: 55.4" / 1407mm
 - 2 ARC DISTANCE: 21.0" / 533mm
 - 3 NOMINAL VOLTAGE: 34.5kV
 - 4 NOMINAL CURRENT: 3000A
 - 5 VOLTAGE WITHSTAND, 60 sec.: 80kV
 - 6 BIL : 200kV
 - 7 ROUTINE TEST ACCORDING TO: IEEE C57.19.01
 - 8 MAX. TORQUE APPLIED ON FLANGE BOLTS: 40 lbf·ft / 54.2 N·m
 - 9 WEIGHT: 191 lb / 86.6 kg

REVISIONS					
ZONE	REV.	DESCRIPTION	DRAWN BY	DATE	APPR.
	A	MODIFY THE BLOCK CONFIGURATION	J.N.PILOTTE	2010/02/26	Y.V.
A2 A6 B6	B	ADD THE "SDC" DESIGNATION TO THE BUSHING NAME. ADD THE MINIMUM GASKET SEAT DIMENSION. INCREASE THE TOLERANCES ON THE FLANGE OUTSIDE DIAMETER.	M. FORGET	2019-08-30	Y.V.



This drawing is the proprietary property of Electro Composites (2008) ULC, not part of the public domain, and is issued with the express understanding and agreement that it is not to be reproduced or copied in whole or in part or issued for furnishing information to others, or used directly or indirectly, in any way detrimental to the interest of Electro Composites (2008) ULC and is to be returned upon request by Electro Composites (2008) ULC. All Rights Reserved.

ITEM NO.	QTY	DRAWING NO.	PART NO.	DESCRIPTION	NOTE / MAT'L
6	1	S-1001-2022		CAPACITANCE TAP ASSEMBLY	ALUMINUM
5	1	S-3529-2532-0		CAP	COPPER
4	1	S-6074-5706		ROD ASSEMBLY	COPPER
3	1	S-6074-5705		SHIELD ASSEMBLY	COPPER
2	1	S-6074-5704		FLANGE	ALUMINUM
1	1	S-6074-5703	-001	CASTING, CYCLOALIPHATIC RESIN	EC-APG-02

PARTS LIST					
GENERAL TOLERANCES (UNLESS OTHERWISE SPECIFIED)			Electro Composites solid HV bushings solution		
X.	±0.125	TITLE: SDC® BUSHING 34.5kV, 3000A MODEL: 200-030-T-534-00			
.X	±0.094				
.XX	±0.063				
.XXX	±0.031				
ANGLES	±0.25°				
RADIUS	±0.031	REVISIONS DRAWN BY: J.N.PILOTTE DATE: 2010/01/11 CHECK BY: _____ PROJECTING: _____ PROJECT MANAGER: _____			
REMOVE BURRS AND BREAK SHARP EDGES			FORMAT: A CAGE CODE: _____ DRAWING NO.: S-6074-5703 REVISION: B	SCALE: 1:8 GENERATED BY: SolidWorks 2009 SHEET: 1 of 1	