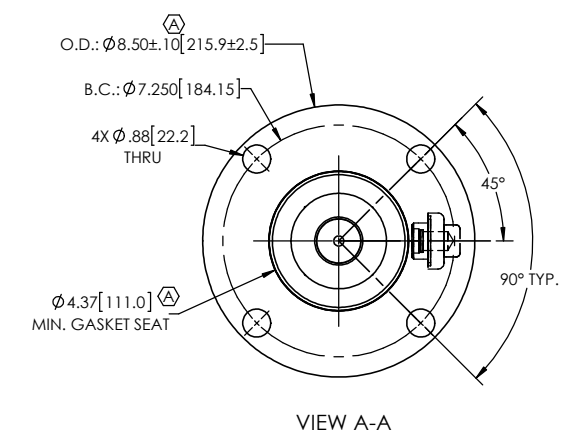
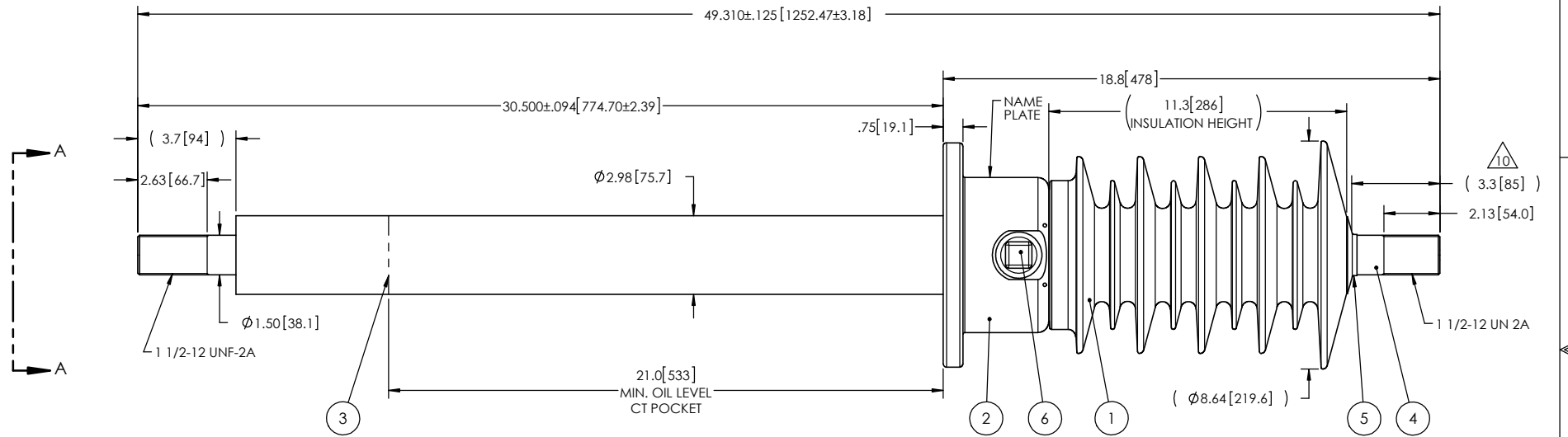


- NOTES:
- 1 CREEPAGE DISTANCE: 33.7" / 856mm
 - 2 ARC DISTANCE: 13.8" / 351mm
 - 3 NOMINAL VOLTAGE: 25kV
 - 4 NOMINAL CURRENT: 1200A
 - 5 VOLTAGE WITHSTAND, 60 sec.: 60kV
 - 6 BIL : 150kV
 - 7 ROUTINE TEST ACCORDING TO: IEEE C57.19.01
 - 8 MAX. TORQUE APPLIED ON FLANGE BOLTS: 40 lbf·ft / 54.2 N·m
 - 9 WEIGHT: 62 lb / 28.1 kg
 - 10 SILVER PLATED, AS PER ASTM B700, TYPE 1, GRADE D, CLASS N, NO NICKEL LAYER, FROM 13 TO 20 MICROMETERS THICKNESS

REVISIONS					
ZONE	REV.	DESCRIPTION	DRAWN BY	DATE	APPR.
C6 B6	A	INCREASE THE TOLERANCES ON THE FLANGE OUTSIDE DIAMETER. ADD THE MINIMUM GASKET SEAT DIMENSION.	M. FORGET	2017-12-11	Y.V.



This drawing is the proprietary property of Electro Composites (2008) ULC, not part of the public domain, and is issued with the express understanding and agreement that it is not to be reproduced or copied in whole or in part or issued for furnishing information to others, or used directly or indirectly, in any way detrimental to the interest of Electro Composites (2008) ULC and is to be returned upon request by Electro Composites (2008) ULC. All Rights Reserved.

ITEM NO.	QTY	DRAWING NO.	PART NO.	DESCRIPTION	NOTE / MAT'L
6	1	S-1001-2022		CAPACITANCE TAP ASSEMBLY	ALUMINUM
5	1	S-1001-0007		CAP	COPPER
4	1	S-8440-7808		ROD ASSEMBLY	COPPER
3	1	S-6074-5717		SHIELD ASSEMBLY	COPPER
2	1	S-6074-5716		FLANGE	ALUMINUM
1	1	S-8440-7807	-001	CASTING, CYCLOALIPHATIC RESIN	EC-APG-02

PARTS LIST					
GENERAL TOLERANCES (UNLESS OTHERWISE SPECIFIED)			Electro Composites solid HV bushings solution		
X.	±0.125	TITLE: SDC® BUSHING 25kV, 1200A MODEL: 150-012-T-537-02			
.X	±0.094		DRAWN BY: J.N.PILOTTE DATE: 2013/02/21		
.XX	±0.063	REMOVE BURRS AND BREAK SHARP EDGES			
.XXX	±0.031	DIMENSIONS ARE IN INCHES (UNLESS OTHERWISE SPECIFIED)			
ANGLES	±0.25°	PROJECTING:			
RADIUS	±0.031	PROJECT MANAGER:			
SCALE: 1:6			FORMAT: A	CAGE CODE:	DRAWING NO.: S-8440-7807
GENERATED BY: SolidWorks 2013			REVISION: A	SHEET: 1 of 1	