

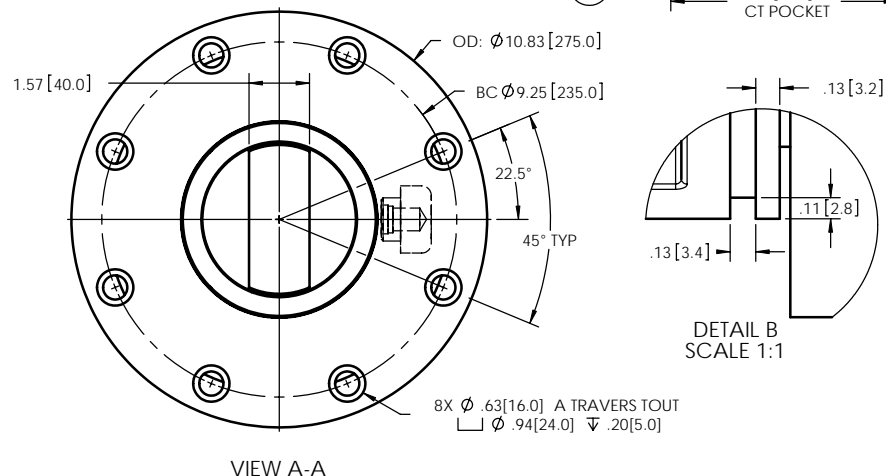
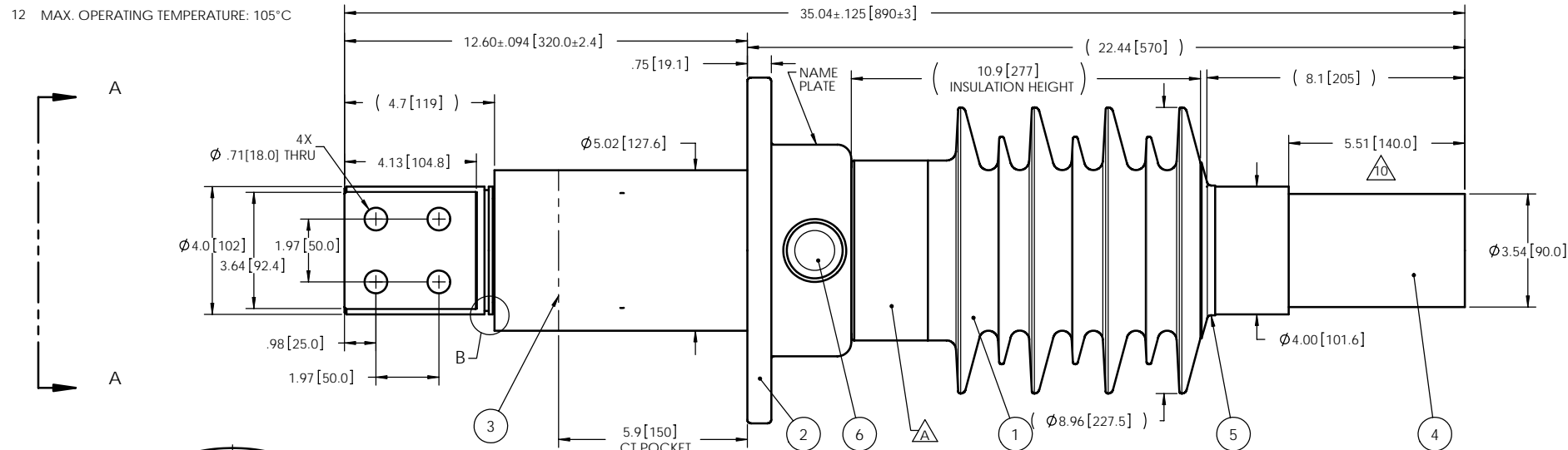
NOTES:

- 1 CREEPAGE DISTANCE: 31.5" / 802.1mm
- 2 ARC DISTANCE: 12.6" / 320.2mm
- 3 NOMINAL VOLTAGE: 24kV
- 4 NOMINAL CURRENT: 4000A
- 5 WITHSTAND VOLTAGE AT 60 sec.: 70kV
- 6 B.I.L. : 150kV
- 7 ROUTINE TEST ACCORDING TO: IEC 60137
- 8 MAX. TORQUE APPLIED ON FLANGE BOLTS: 40 lbf x ft
- 9 WEIGHT: 124 lbs / 56 Kg

10 SILVER PLATED TOP END, AS PER ASTM B700, TYPE 1, GRADE D, CLASS N, NO NICKEL LAYER, FROM 13 TO 20 MICROMETERS THICKNESS

11 BUSHING SUITABLE FOR HORIZONTAL INSTALLATION WITHIN IPB BUS DUCT. LEFT SIDE OF BUSHING TO BE COMPLETELY SUBMERGED UNDER TRANSFORMER OIL FOR PROPER OPERATION.

12 MAX. OPERATING TEMPERATURE: 105°C



This drawing is the proprietary property of Electro Composites (2008) ULC, not part of the public domain, and is issued with the express understanding and agreement that it is not to be reproduced or copied in whole or in part or issued for furnishing information to others, or used directly or indirectly, in any way detrimental to the interest of Electro Composites (2008) ULC and is to be returned upon request by Electro Composites (2008) ULC. All Rights Reserved.

REVISIONS					
ZONE	REV.	DESCRIPTION	DRAWN BY	DATE	APPR.
	A	MODIFY THE BLOCK CONFIGURATION	J.N.PILOTTE	2010/02/26	Y.V.

ITEM NO.	QTY	DRAWING NO.	PART NO.	DESCRIPTION	NOTE / MAT'L
6	1	S-1001-2022		CAPACITANCE TAP ASSEMBLY	ALUMINUM
5	1	S-3974-3543		CAP	COPPER
4	1	S-6133-5751		ROD ASSEMBLY	COPPER
3	1	S-6133-5750		SHIELD ASSEMBLY	COPPER
2	1	S-6133-5749		FLANGE	ALUMINUM
1	1			CASTING, CYCLOALIPHATIC RESIN	EC-APG-02
PARTS LIST					

GENERAL TOLERANCES (UNLESS OTHERWISE SPECIFIED)		Electro Composites TM solid HV bushings solution	
X.	±0.125	TITLE: BUSHING 24kV, 4000A MODEL: 150-040-T-540-00	
.X	±0.094		
.XX	±0.063	FORMAT	CAGE CODE
.XXX	±0.010	DRAWING NO.	
ANGLES	±0.5°	S- 6133-5748	
RADIUS	±0.031	REVISION	A
REMOVE BURRS AND BREAK SHARP EDGES		SCALE	1:5
DIMENSIONS ARE IN INCHES (UNLESS OTHERWISE SPECIFIED)		GENERATED BY	SolidWorks 2009
DRAWN BY: J. CLICHE		SHEET	1 of 1
CHECK BY:			
PROJECT ENG:			
PROJECT MANAGER:			