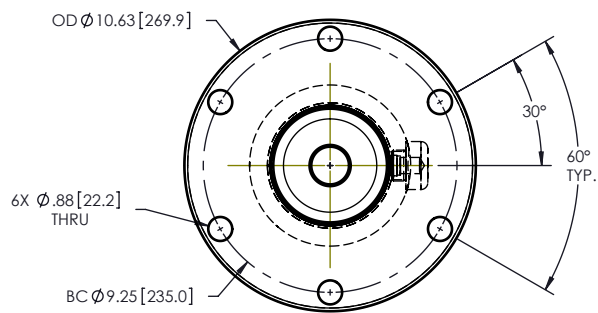
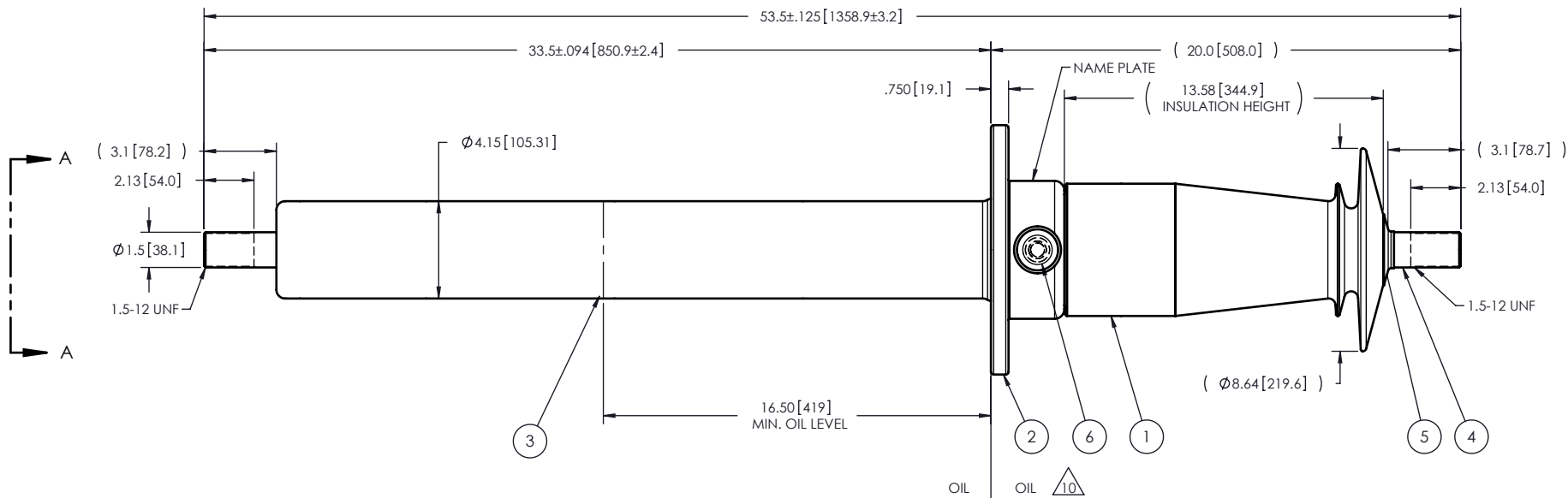


NOTES:

- 1 CREEPAGE DISTANCE: 19.40"/ 493mm
- 2 ARC DISTANCE: 15.91"/ 404mm
- 3 NOMINAL VOLTAGE: 69.0kV
- 4 NOMINAL CURRENT: 1200A
- 5 WITHSTAND VOLTAGE AT 60 sec.: 160kV
- 6 B.I.L. : 350kV
- 7 ROUTINE TEST ACCORDING TO: IEEE C57.19.01
- 8 MAX. TORQUE APPLIED ON FLANGE BOLTS: 40 lbf x ft
- 9 WEIGHT: 83.0 lbs / 38 Kg
- 10 BUSHING TO BE FULLY IMMERSED UNDER OIL ON BOTH SIDES OF FLANGE.

REVISIONS					
ZONE	REV.	DESCRIPTION	DRAWN BY	DATE	APPR.



VIEW A-A

This drawing is the proprietary property of Electro Composites (2008) ULC, not part of the public domain, and is issued with the express understanding and agreement that it is not to be reproduced or copied in whole or in part or issued for furnishing information to others, or used directly or indirectly, in any way detrimental to the interest of Electro Composites (2008) ULC and is to be returned upon request by Electro Composites (2008) ULC. All Rights Reserved.

ITEM NO.	QTY	DRAWING NO.	PART NO.	DESCRIPTION	NOTE / MAT'L
6	1	S-1001-2022		CAPACITANCE TAP ASSEMBLY	ALUMINUM
5	1	S-1001-0007		CAP	COPPER
4	1	S-6212-5804		ROD ASSEMBLY	COPPER
3	1	S-5318-4937		SHIELD ASSEMBLY	COPPER
2	1	S-5172-4704		FLANGE	ALUMINUM
1	1	S-6212-5803		CASTING, CYCLOALIPHATIC RESIN	EC-APG-02

PARTS LIST

GENERAL TOLERANCES (UNLESS OTHERWISE SPECIFIED)

X.	±0.125
.X	±0.094
.XX	±0.063
.XXX	±0.010
ANGLES	±0.1°
RADIUS	±0.031

REMOVE BURRS AND BREAK SHARP EDGES

DIMENSIONS ARE IN INCHES (UNLESS OTHERWISE SPECIFIED)

REPLACE:

DRAWN BY: A.SAVARD DATE: 2010/03/18

CHECK BY:

PROJECT ENG.:

PROJECT MANAGER:

**Electro Composites**  
solid HV bushings solution

TITLE:  
BUSHING: 69.0kV, 1200A  
MODEL: 350-012-T-547-00

FORMAT: A	CAGE CODE:	DRAWING NO.: S-6212-5803	REVISION: NR
-----------	------------	--------------------------	--------------

SCALE: 1:7	GENERATED BY: SolidWorks 2009	SHEET: 1 of 1
------------	-------------------------------	---------------