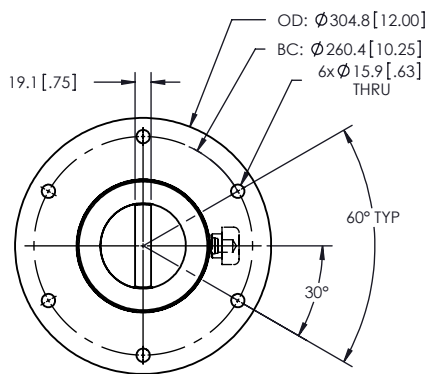
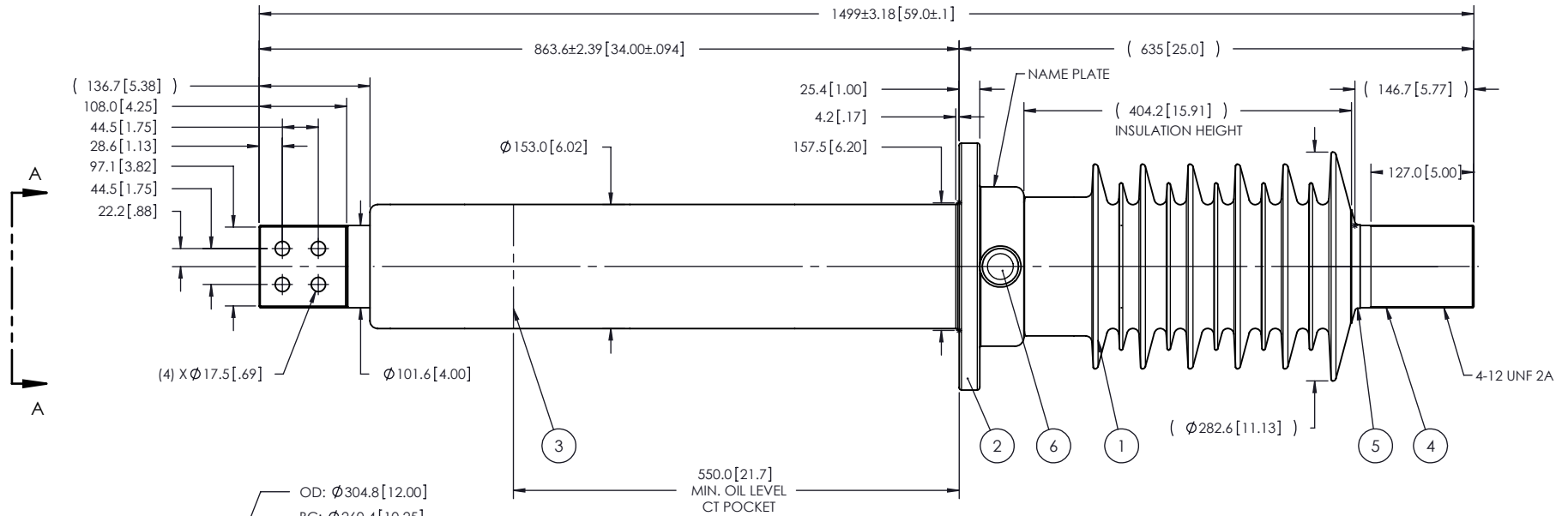


- NOTES:
- 1 CREEPAGE DISTANCE: 1105 mm/43.5"
 - 2 ARC DISTANCE: 467 mm/18.4"
 - 3 NOMINAL VOLTAGE: 35kV
 - 4 NOMINAL CURRENT: 5000A
 - 5 WITHSTAND VOLTAGE AT 60 sec.: 95kV
 - 6 B.I.L. : 200kV
 - 7 ROUTINE TEST ACCORDING TO CSA C88.1-96
 - 8 MAX. TORQUE APPLIED ON FLANGE BOLTS: 70 lbf x ft
- WEIGHT: 137.2 Kg / 302 lbs

REVISIONS					
ZONE	REV.	DESCRIPTION	DRAWN BY	DATE	APPR.



VIEW A-A

ITEM NO.	QTY	DRAWING NO.	PART NO.	DESCRIPTION	NOTE / MAT'L
6	1	S-1001-2022		CAPACITANCE TAP ASSEMBLY	ALUMINUM
5	1	S-3974-3543		CAP	COPPER
4	1	S-6171-5817		ROD ASSEMBLY	COPPER
3	1	S-6171-5816		SHIELD ASSEMBLY	COPPER
2	1	S-6171-5815		FLANGE	ALUMINUM
1	1	S-6171-5814		CASTING, CYCLOALIPHATIC RESIN	EC-APG-02

PARTS LIST

GENERAL TOLERANCES (UNLESS OTHERWISE SPECIFIED)

X.	±3.2
.X	±2.4
.XX	±1.6
.XXX	±0.8
ANGLES	±1.0°
RADIUS	±1.6

REMOVE BURRS AND BREAK SHARP EDGES

DIMENSIONS ARE IN MILLIMETERS (UNLESS OTHERWISE SPECIFIED)

DRAWN BY: J.N.PILOTTE DATE: 2010/03/26

CHECK BY:

PROJECT ENG.:

PROJECT MANAGER:

Electro Composites
solid HV bushings solution

TITLE: BUSHING 35kV, 5000A
MODEL: 200-050-T-551-00

FORMAT

CAGE CODE

DRAWING NO.

REVISION

SCALE

1:8



GENERATED BY: SolidWorks 2009

SHEET

1 of 1

This drawing is the proprietary property of Electro Composites (2008) ULC, not part of the public domain, and is issued with the express understanding and agreement that it is not to be reproduced or copied in whole or in part or issued for furnishing information to others, or used directly or indirectly, in any way detrimental to the interest of Electro Composites (2008) ULC and is to be returned upon request by Electro Composites (2008) ULC. All Rights Reserved.