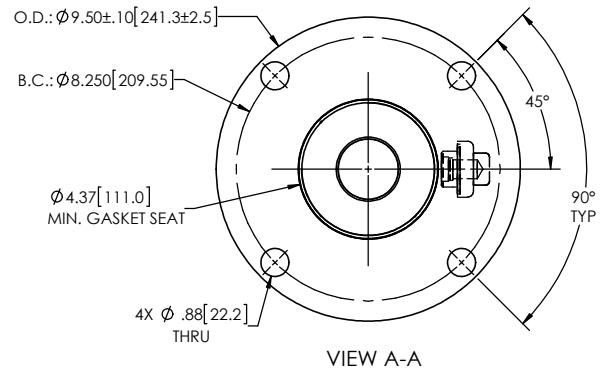
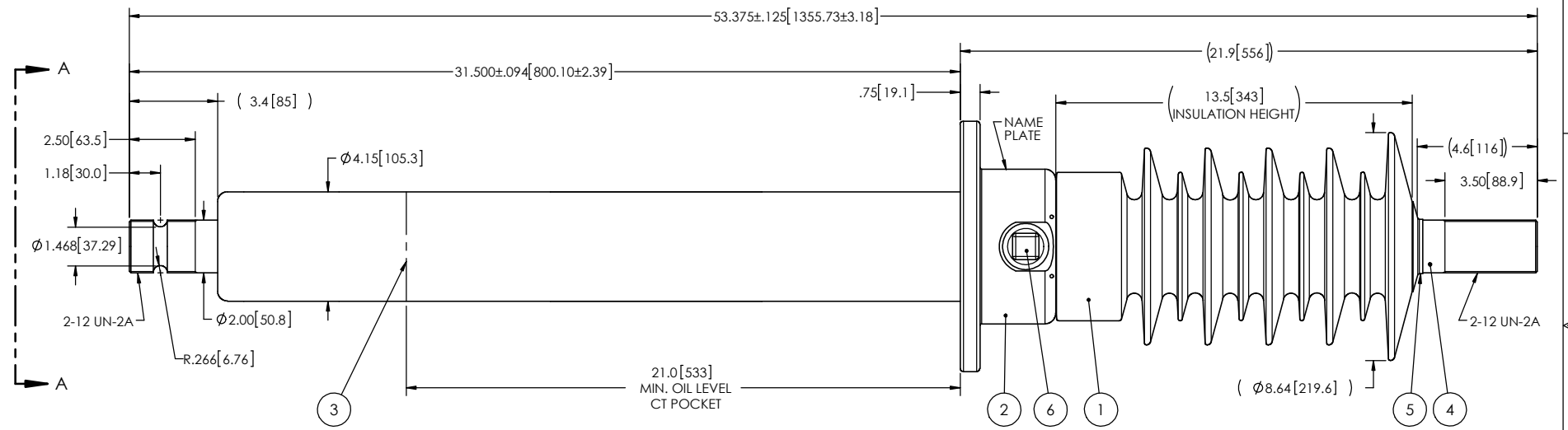


NOTES:

- 1 CREEPAGE DISTANCE: 37.6"/955mm
- 2 ARC DISTANCE: 15.7"/399mm
- 3 NOMINAL VOLTAGE: 34.5KV
- 4 NOMINAL CURRENT: 2500A
- 5 VOLTAGE WITHSTAND, 60 sec.: 80kV
- 6 BIL : 200KV
- 7 ROUTINE TEST ACCORDING TO: IEEE C57.19.01
- 8 MAX. TORQUE APPLIED ON FLANGE BOLTS: 40 lbf · ft / 54.2 N · m
- 9 WEIGHT 99 lb /44.9 kg

REVISIONS					
ZONE	REV.	DESCRIPTION	DRAWN BY	DATE	APPR.



ITEM NO.	QTY	DRAWING NO.	PART NO.	DESCRIPTION	NOTE / MAT'L
6	1	S-1001-2022		CAPACITANCE TAP ASSEMBLY	ALUMINUM
5	1	S-1344-0162-0		CAP	COPPER
4	1	S-9729-9513		ROD ASSEMBLY	COPPER
3	1	S-5927-5555		SHIELD ASSEMBLY	COPPER
2	1	S-5280-4890		FLANGE	ALUMINUM
1	1	S-9729-9512	-001	CASTING, CYCLOALIPHATIC RESIN	EC-APG-02

PARTS LIST					
GENERAL TOLERANCES (UNLESS OTHERWISE SPECIFIED)			Electro Composites solid HV bushings solution		
X.	±0.125				
.X	±0.094		TITLE: SDC® BUSHING 34.5kV, 2500A MODEL: 200-025-B-562-02		
.XX	±0.063		DRAWN BY: J.N.PILOTTE DATE: 2017/11/27		
.XXX	±0.010		CHECK BY:		
ANGLES	±0.25°		PROJECTING:		
RADIUS	±0.031		PROJECT MANAGER:		
REMOVE BURRS AND BREAK SHARP EDGES			SCALE: 1:6 CAGE CODE: A DRAWING NO.: S-9729-9512 REVISION: NR		
DIMENSIONS ARE IN INCHES (UNLESS OTHERWISE SPECIFIED)			GENERATED BY: SolidWorks 2013 SHEET: 1 of 1		

This drawing is the proprietary property of Electro Composites (2008) ULC, not part of the public domain, and is issued with the express understanding and agreement that it is not to be reproduced or copied in whole or in part or issued for furnishing information to others, or used directly or indirectly, in any way detrimental to the interest of Electro Composites (2008) ULC and is to be returned upon request by Electro Composites (2008) ULC. All Rights Reserved.