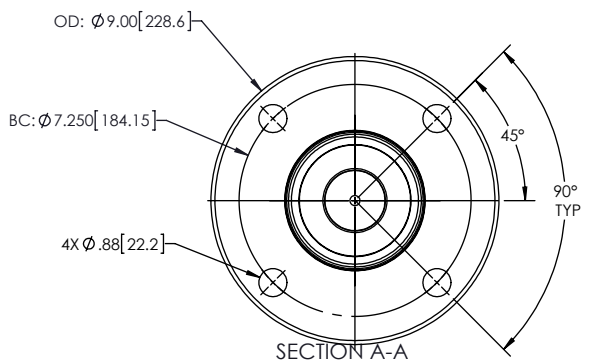
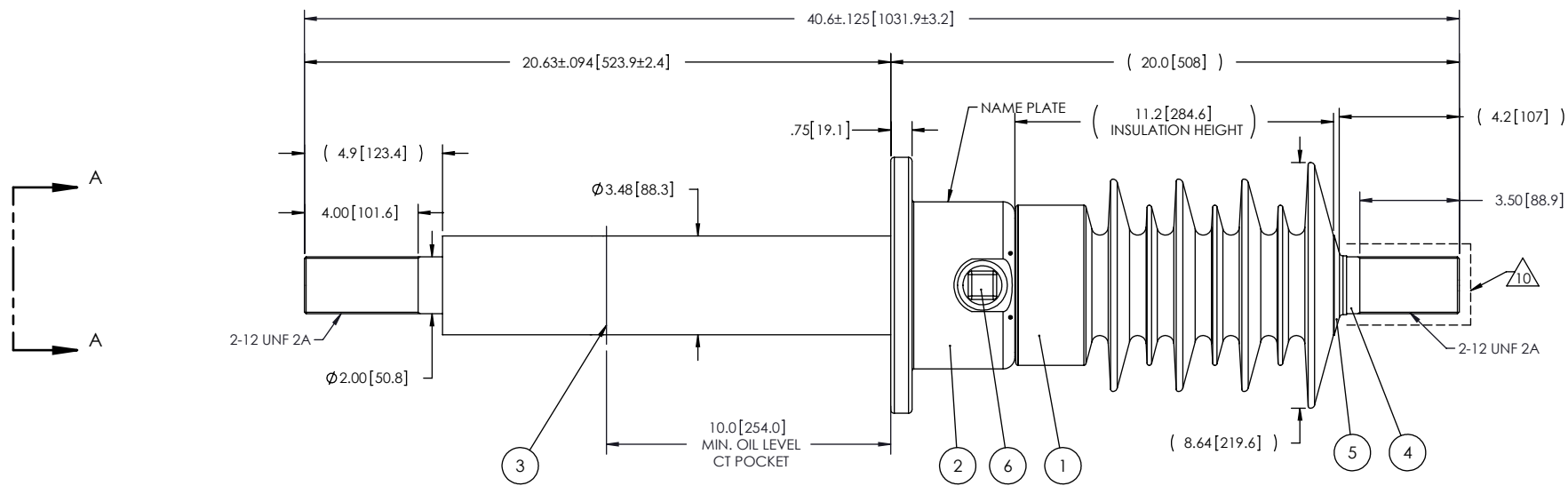


NOTES:

- 1 CREEPAGE DISTANCE: 30.3" / 770mm
- 2 ARC DISTANCE: 13.4" / 339mm
- 3 NOMINAL VOLTAGE: 27.5kV
- 4 NOMINAL CURRENT: 2000A
- 5 WITHSTAND VOLTAGE AT 60 sec.: 70kV
- 6 B.I.L. : 150kV
- 7 ROUTINE TEST ACCORDING TO: CSA-C88.1-96
- 8 MAX. TORQUE APPLIED ON FLANGE BOLTS: 40 lbf x ft
- 9 WEIGHT 72 lb / 33.9kg
- 10 SILVER PLATED TOP END, AS PER ASTM B700, TYPE 1, GRADE D, CLASS N, NO NICKEL LAYER, FROM 13 TO 20 MICROMETERS THICKNESS
- 11 MAXIMUM OPERATING TEMPERATURE: 130°C

REVISIONS					
ZONE	REV.	DESCRIPTION	DRAWN BY	DATE	APPR.



ITEM NO.	QTY	DRAWING NO.	PART NO.	DESCRIPTION	NOTE / MAT'L
6	1	S-1001-2022		CAPACITANCE TAP ASSEMBLY	ALUMINUM
5	1	S-1344-0162		CAP	COPPER
4	1	S-6387-5993		ROD ASSEMBLY	COPPER
3	1	S-6387-5992		SHIELD ASSEMBLY	COPPER
2	1	S-6387-6030		FLANGE	ALUMINIUM
1	1	S-8845-8074	-001	CASTING, BISPHENOL RESIGN	EC-APG-15NA

PARTS LIST

GENERAL TOLERANCES (UNLESS OTHERWISE SPECIFIED)

X. ±0.125  
 .X ±0.094  
 .XX ±0.063  
 .XXX ±0.010  
 ANGLES ±0.25°  
 RADIUS ±0.031

REMOVE BURRS AND BREAK SHARP EDGES

DIMENSIONS ARE IN INCHES (UNLESS OTHERWISE SPECIFIED)

**ElectroComposites™**  
**solid HV bushings solution**

TITLE: SDC® BUSHING: 27.5kV, 2000A  
 MODEL: 150-020-T-568-02

DRAWN BY: J.N.PILOTTE DATE: 2013/09/13

CHECK BY: PROJECT ENG.: PROJECT MANAGER:

FORMAT: A CAGE CODE: DRAWING NO.: S-8845-8074 REVISION: NR

SCALE: 1:6 GENERATED BY: SolidWorks 2012 SHEET: 1 of 1

This drawing is the proprietary property of Electro Composites (2008) ULC, not part of the public domain, and is issued with the express understanding and agreement that it is not to be reproduced or copied in whole or in part or issued for furnishing information to others, or used directly or indirectly, in any way detrimental to the interest of Electro Composites (2008) ULC and is to be returned upon request by Electro Composites (2008) ULC. All Rights Reserved.