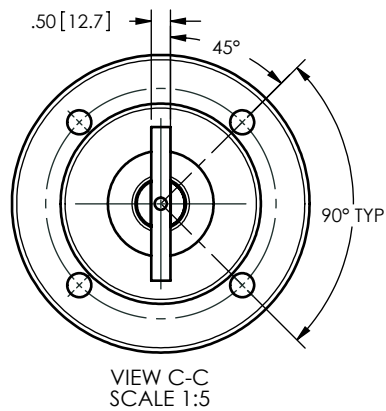
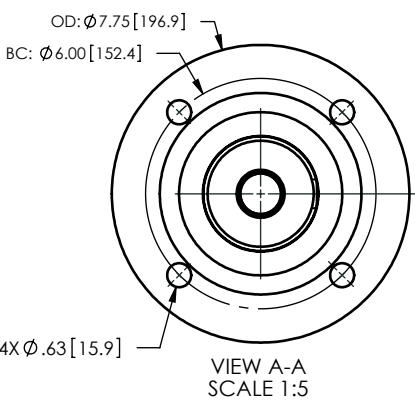
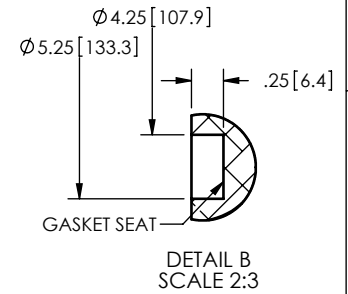
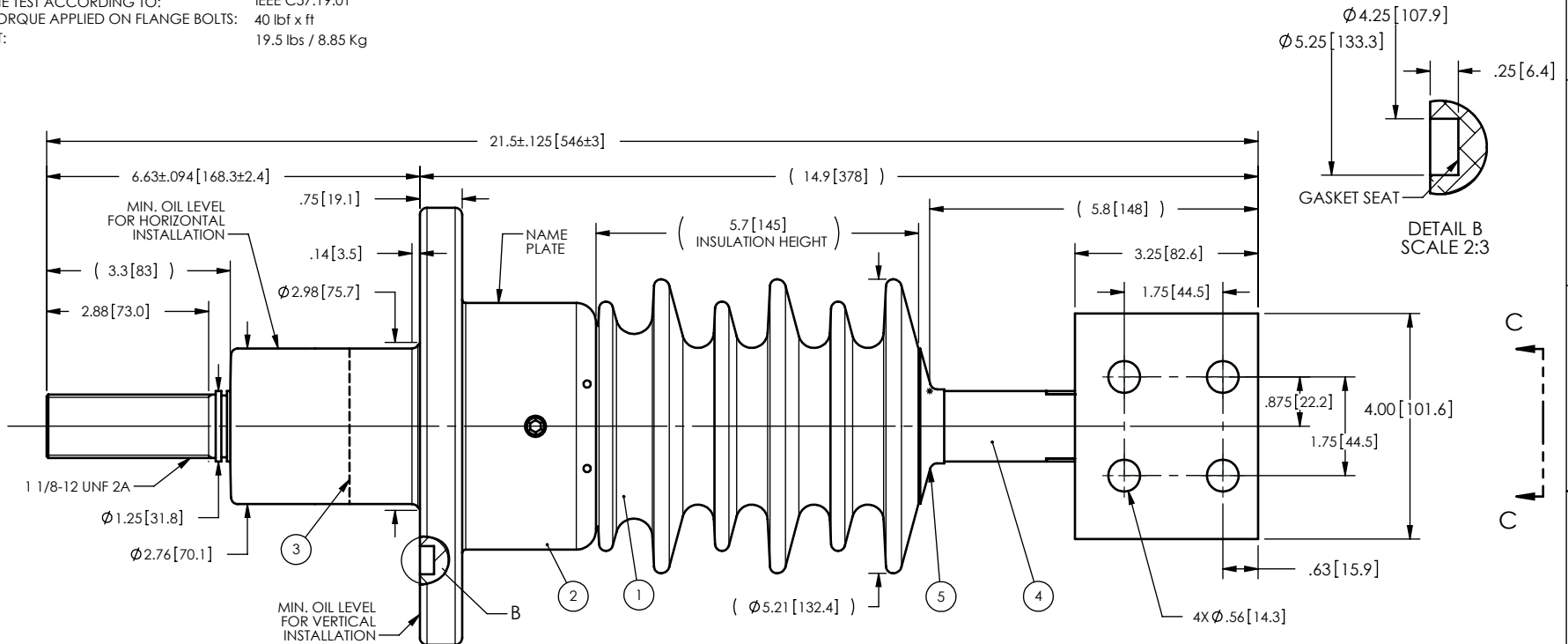


NOTES:

- 1 CREEPAGE DISTANCE: 14.0" / 356mm
- 2 ARC DISTANCE: 6.8" / 173mm
- 3 NOMINAL VOLTAGE: 15kV
- 4 NOMINAL CURRENT: 600A
- 5 WITHSTAND VOLTAGE AT 60 sec.: 50kV
- 6 B.I.L. : 110kV
- 7 ROUTINE TEST ACCORDING TO: IEEE C57.19.01
- 8 MAX. TORQUE APPLIED ON FLANGE BOLTS: 40 lbf x ft
- 9 WEIGHT: 19.5 lbs / 8.85 Kg



ITEM NO.	QTY	DRAWING NO.	PART NO.	DESCRIPTION	NOTE / MAT'L
5	1	S-1016-0008		CAP	COPPER
4	1	S-7588-7135		ROD ASSEMBLY	COPPER
3	1	S-7588-7134		SHIELD ASSEMBLY	COPPER
2	1	S-7588-7133		FLANGE	ALUMINIUM
1	1	S-7588-7132	-001	CASTING, CYCLOALIPHATIC RESIN	EC-APG-02

PARTS LIST

GENERAL TOLERANCES (UNLESS OTHERWISE SPECIFIED)

X.	±0.125
.X	±0.094
.XX	±0.063
.XXX	±0.010
ANGLES	±0.1°
RADIUS	±0.031

REMOVE BURRS AND BREAK SHARP EDGES

DIMENSIONS ARE IN INCHES (UNLESS OTHERWISE SPECIFIED)

**ElectroComposites**<sup>TM</sup>  
**solid HV bushings solution**

TITLE: BUSHING 15kV, 600A  
MODEL: 110-006-T-576-01

DRAWN BY: J.N.PILOTTE DATE: 2012/03/12

CHECK BY:

PROJECT ENG.:

PROJECT MANAGER:

FORMAT	CAGE CODE	DRAWING NO.	REVISION
A		S-7588-7132	NR

SCALE	GENERATED BY:	SHEET
1:3	SolidWorks 2009	1 of 1

This drawing is the proprietary property of ElectroComposites (2008) ULC, not part of the public domain, and is issued with the express understanding and agreement that it is not to be reproduced or copied in whole or in part or issued for furnishing information to others, or used directly or indirectly, in any way detrimental to the interest of ElectroComposites (2008) ULC and is to be returned upon request by ElectroComposites (2008) ULC. All Rights Reserved.