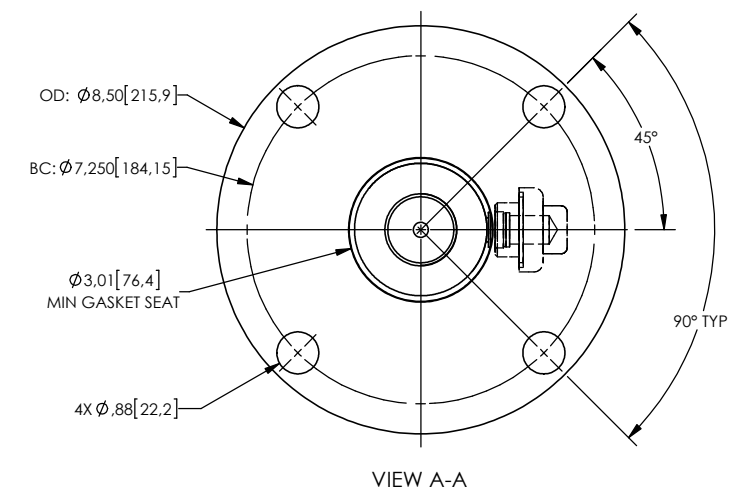
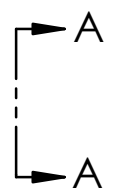
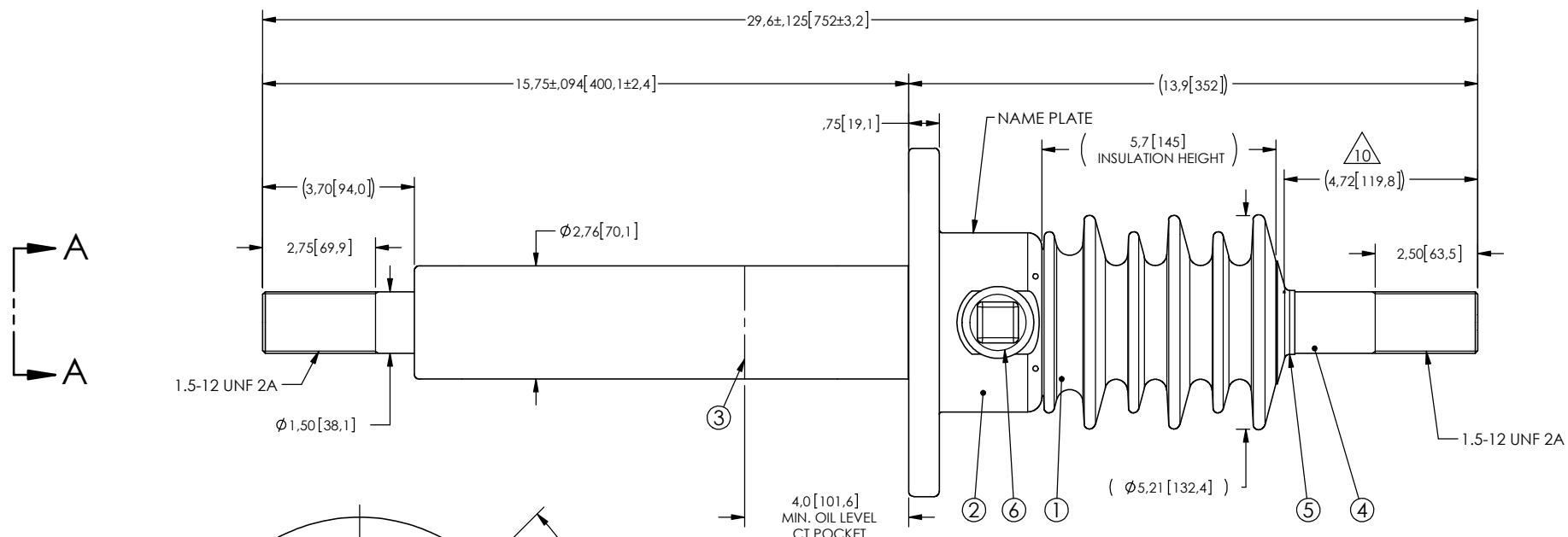


NOTES:

- 1 CREEPAGE DISTANCE : 13.7" / 349mm
- 2 ARC DISTANCE : 6.7" / 170mm
- 3 NOMINAL VOLTAGE: 15kV
- 4 NOMINAL CURRENT: 1200A
- 5 WITHSTAND VOLTAGE AT 60 sec.: 50kV
- 6 B.I.L. : 110kV
- 7 APPLICATION STANDARD: IEEE C57.19.01
- 8 MAX. TORQUE APPLIED ON FLANGE BOLTS: 40 lb·ft / 94.9 N·m
- 9 WEIGHT: 31 lb / 14 Kg

△10 SILVER PLATED, AS PER ASTM B700, TYPE 1, GRADE D, CLASS N, NO NICKEL LAYER, FROM 13 TO 20 μm THICKNESS

REVISIONS			DRAWN BY	DATE	APPR.
ZONE	REV.	DESCRIPTION			



ITEM NO.	QTY	DRAWING NO.	PART NO.	DESCRIPTION	NOTE / MAT'L
6	1	S-1001-2022		CAPACITANCE TAP ASSEMBLY	ALUMINUM
5	1	S-1001-0007		CAP	COPPER
4	1	S-9086-8516		ROD ASSEMBLY	COPPER
3	1	S-9086-8515		SHIELD ASSEMBLY	COPPER
2	1	S-7314-6911		FLANGE	ALUMINUM
1	1	S-9086-8514	-001	CASTING, CYCLOALIPHATIC RESIN	EC-APG-02

PARTS LIST					
GENERAL TOLERANCES (UNLESS OTHERWISE SPECIFIED)		REPLACE:		<b>ElectroComposites</b> solid HV bushings solution TITLE: SDC® BUSHING 15KV, 1200A MODEL: 110-012-T-584-01	
X.	±0.125				
.X	±0.094			FORMAT	CAGE CODE
.XX	±0.063			DRAWING NO.	
.XXX	±0.010			REVISION	
ANGLES	±0.25°			S-9086-8514 NR	
RADIUS	±0.031			SCALE	
REMOVE BURRS AND BREAK SHARP EDGES		DRAWN BY: J.N.PILOTTE		1:4	
DIMENSIONS ARE IN INCHES (UNLESS OTHERWISE SPECIFIED)		DATE: 2014/08/21		GENERATED BY: SolidWorks 2013	
		PROJECTING:		SHEET 1 of 1	
		PROJECT MANAGER:			

This drawing is the proprietary property of Electro Composites (2008) ULC, not part of the public domain, and is issued with the express understanding and agreement that it is not to be reproduced or copied in whole or in part or issued for furnishing information to others, or used directly or indirectly, in any way detrimental to the interest of Electro Composites (2008) ULC and is to be returned upon request by Electro Composites (2008) ULC. All Rights Reserved.