

NEMA NO.	RATING	POLE/WIRE	CATALOG NO.	VOLTAGE COLOR CODE
L14-30P	125/250V	3P/4W GROUNDING	HBL2715	ORANGE
L15-30P	3 Ø 250VAC	3P/4W GROUNDING	HBL2725 >HBL2725M309	BLUE
L16-30P	3 Ø 480VAC	3P/4W GROUNDING	HBL2735	RED
L17-30P	3 Ø 600VAC	3P/4W GROUNDING	HBL2745	BLACK
L18-30P	3 Ø Y 120/208VAC	4P/4W NON-GROUNDING	HBL2755	BLUE
L19-30P	3 Ø Y 277/480VAC	4P/4W NON-GROUNDING	HBL2765	RED
L20-30P	3 Ø Y 347/600VAC	4P/4W NON-GROUNDING	HBL2775	BLACK
L21-30P	3 Ø Y 120/208VAC	4P/5W GROUNDING	HBL2815	BLUE
L22-30P	3 Ø Y 277/480VAC	4P/5W GROUNDING	HBL2825	RED
L23-30P	3 Ø Y 347/600VAC	4P/5W GROUNDING	HBL2835	BLACK
L26-30P	3 Ø Y 240/415VAC	4P/5W GROUNDING	HBL2805	RED

M-7908

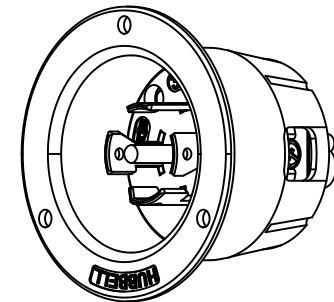
6

NOTES:

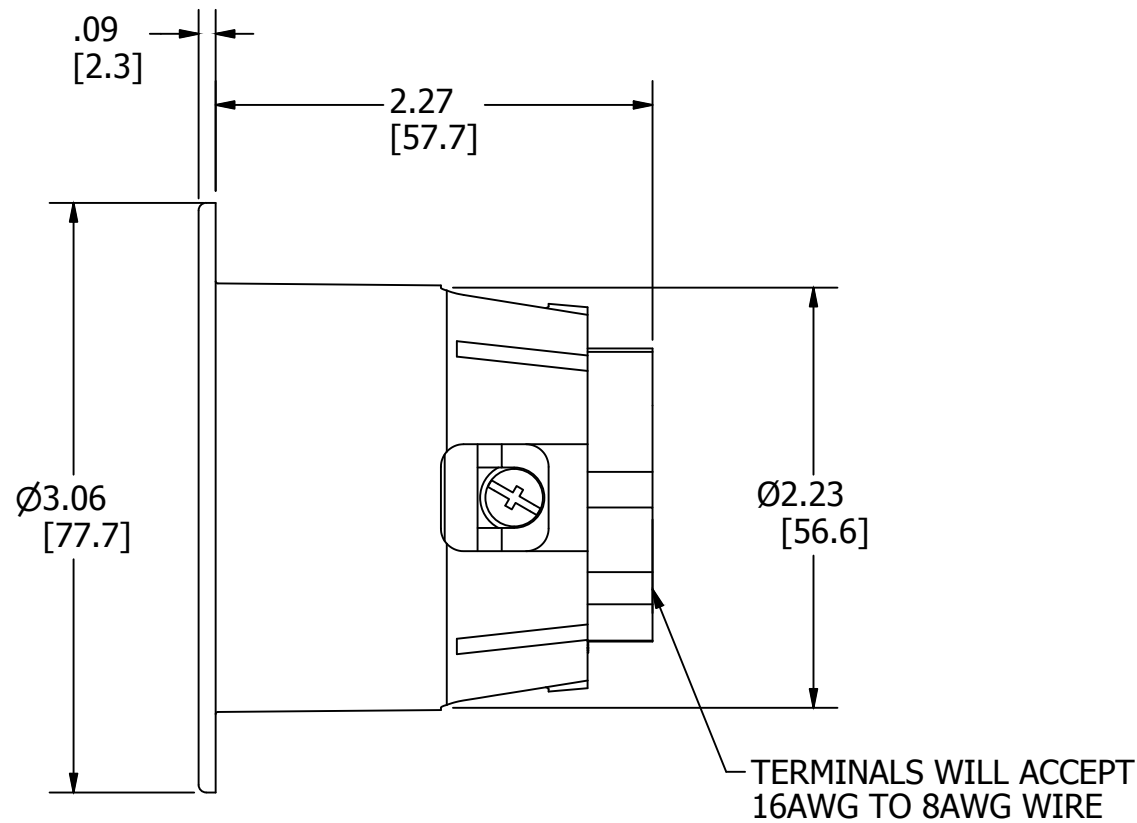
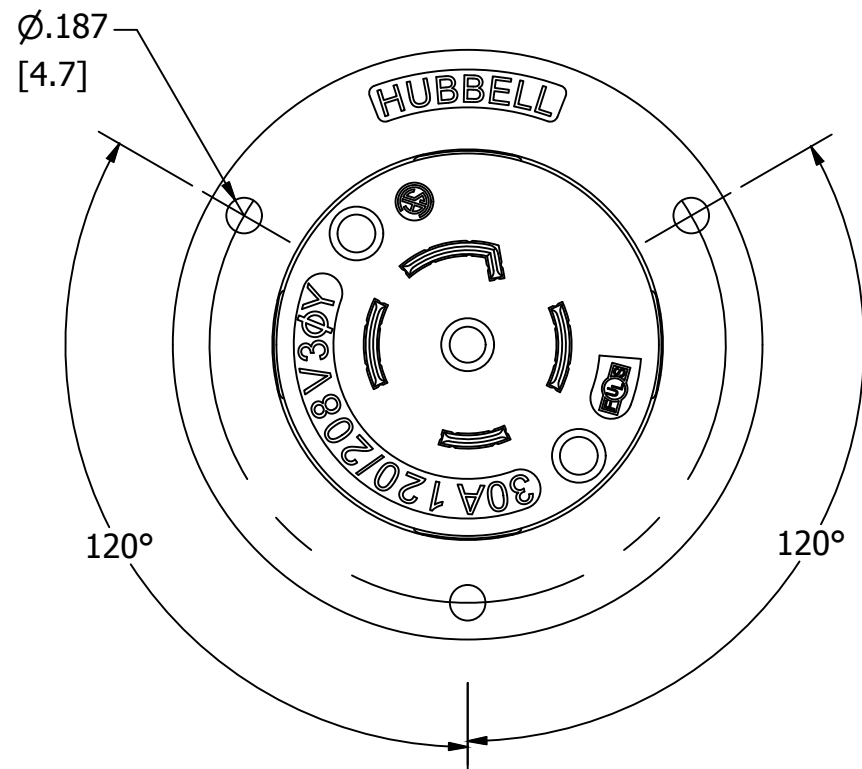
1. DIMENSIONS ARE IN INCHES [mm].
2. ALL SCREWS ARE COMBINATION PHILLIPS/SLOTTED/ROBERTSON HEAD.
3. > INDICATES EVALUATED BY UL IN ACCORDANCE WITH IEC 309-1.
4. * WHITE FINISH ON NEUTRAL BLADE WHEN USED.
5. CATALOG NO. & RATING PRINTED ON FLANGE COLOR CODE BY VOLTAGE.

LIST OF PARTS

DESCRIPTION	MATERIAL	FINISH
CASING	NYLON	NATURAL
BLADE HOLDER	NYLON	NATURAL
RETAINER	POLYCARBONATE	CLEAR
BLADE	.070 BRASS	
CENTER GROUND & TERMINAL LUG (5 WIRE)	BRASS	
WIRE CLAMP	.080 CRS	NICKEL PLATE
#10 TERMINAL SCREWS	BRASS	*
#10 GROUND SCREW	BRASS	GREEN
ASSEMBLY FASTENERS	STEEL	ZINC PLATE
#8 MOUNTING SCREWS	BRASS	NICKEL PLATE



**CATALOG NO. HBL2815
(NOT SHOWN TO SCALE)**



6	ADDED L26-30P PER DCN 22357 JZW	TLS	8/30/16
5	REVISED PER DCN 22024 SPN	DJP	5/19/16
4	REDRAWN WITH EMBEDDED CAD MODEL WITH NO CHANGES TO PART GEOMETRY. PER DCN 21895 SPN	DJP	2/5/16

REV	DESCRIPTION	APP	DATE
-----	-------------	-----	------

THE DESIGN AND DIMENSIONS OF THE PRODUCT SHOWN ON THIS DRAWING ARE SUBJECT TO CHANGE WITHOUT NOTICE

TITLE
30A 4 & 5-WIRE TWIST-LOCK FLANGE INLET

TOLERANCES UNLESS OTHERWISE SPECIFIED		WIRING DEVICE-KELLEMS HUBBELL INCORPORATED SHELTON, CT	
.XX = ± .01	.XXX = ± .005	DR. BY B.C.	APP. BY DJP
ANGLES = ± 2'		TR. BY	SCALE 1:1
		CHK. BY DJP	DATE 2/12/98

DIMENSIONS IN INCHES [mm] SEE TABLE REPAIRABLE NON-REPAIRABLE **B** M-7908 **6**

Twist-Lock® Devices
 30A, 125/250V AC, 3 Pole, 4 Wire Grounding
 Insulgrip® Flanged Inlet

HUBBELL

Features

- Backwired terminations for ease of installation
- #10-32 Multiple drive terminal screws (Slotted, Phillips, Robertson)
- Mounting screws included



Ordering Information

Description	Device Color	UPC	Catalog Number
Nylon casing, back wired.	White	783585039190	HBL2715

Listings

Listed to UL 498
 Fed. Spec. W-C-596
 Certified to CSA C22.2 No.42

Specifications

Housing	Nylon
Terminal Retainer	Clear polycarbonate
Blades	Brass
Terminal Screws	#10-32 Brass (Phillips / Slotted / Robertson)
Terminal Clamp	Cold rolled steel – nickel plated
Assembly Screws	Steel - nickel plated
Mounting Screw	Nickel plated brass

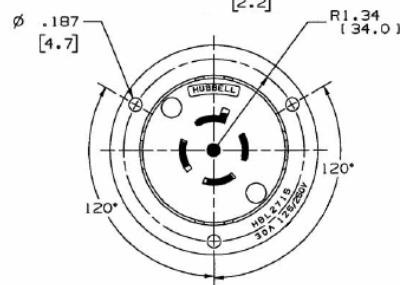
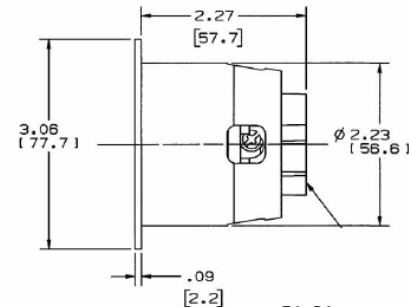
Performance

Electrical	
Current Interrupting	Certified for current interrupting at full rated current
Dielectric Voltage	Withstands 2,000V minimum

Mechanical	
Terminal Accommodation	#16 AWG - #8 AWG solid or stranded copper wire only.

Terminal Identification	Terminals identified in accordance with UL 498
-------------------------	--

Environmental	
Flammability	HB or better per UL94/CSA 22.2 No.0.17
Moisture Resistance	IP20 Suitability
Operating Temperatures	Maximum Continuous 75°C. Minimum -40°C (w/o impact)



Accessories

Connector	HBL2713
Weatherproof Lift Cover	WP2

Resources

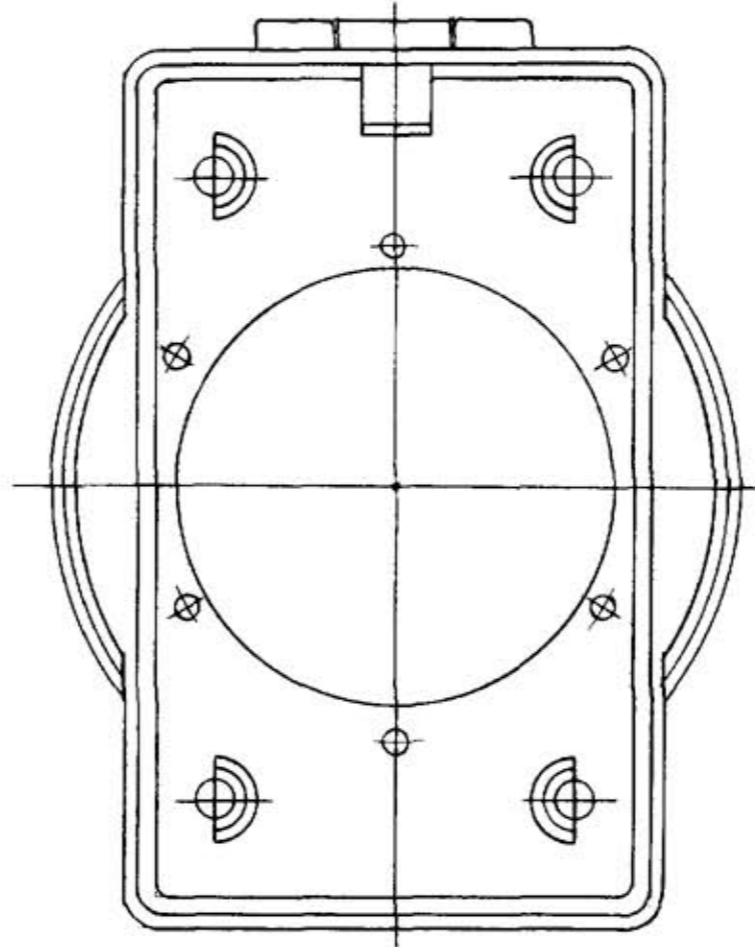
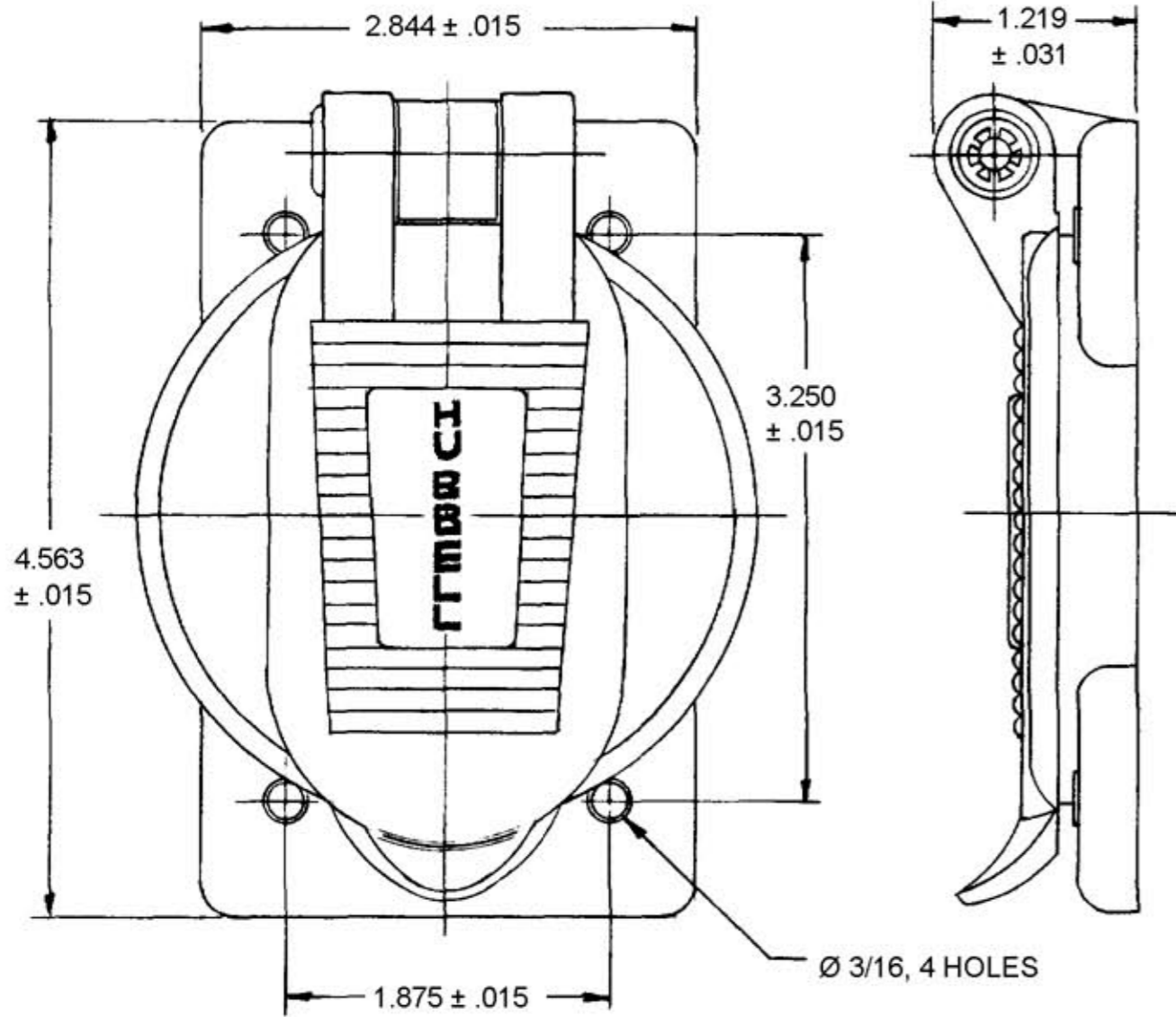
Customer Use Drawing
 eCatalog

Dimensions in Inches (mm)

Hubbell Wiring Device-Kellems • Hubbell Incorporated (Delaware) • 40 Waterview Drive • Shelton, CT 06484
 Phone (800) 288-6000 • Fax (800) 255-1031 • Specifications subject to change without notice.



M-6355 1



LIST OF PARTS		
DESCRIPTION	MATERIAL	FINISH
COVER	LEXAN	GRAY
FLAP	LEXAN	GRAY
INTER FACE GASKET	NEOPRENE	
FLAP GASKET	NEOPRENE	
SPRING	STAINLESS ST.	
HINGE	STAINLESS ST.	
RETAINING RING	STAINLESS ST.	

DIMENSION SHEET FOR CAT. NO. WP2

REPAIRABLE NON-REPAIRABLE

SYM	REVISIONS	APP	DATE
1	CONVERTED DIMS TO 3 PL DECIMAL AND ADDED TOL PER DCN #7794. AMZ	DB	7-31-00

B
M-6355

CAT. NO. WP2

TITLE
WEATHER PROOF LIFT COVER
PLATE FOR SIZE #2 & #3 FLANGED
INLETS AND OUTLETS

TOLERANCES UNLESS OTHERWISE SPECIFIED
FRACTIONS ± 1/64
DECIMALS ± .005
ANGLES ± 2°

HARVEY HUBBELL, INC.
BRIDGEPORT, CONN.
DR. BY A.J.L. APP. BY _____
TR. BY _____ SCALE FULL
CHK'D. BY _____ DATE 4-12-83

1

Wallplates
Weatherproof Covers for Flanged Devices
for Flanged Inlets and Flanged Receptacles

HUBBELL

Features

- Gray thermoplastic, corrosion resistant
- Weatherproof Plate for Flanged Inlets and Flanged Receptacles

Ordering Information

Description	Catalog Number	UPC
For all 4 & 5 Wire 20A & 30A Insulgrip® Flanged Units	WP2	783585392288

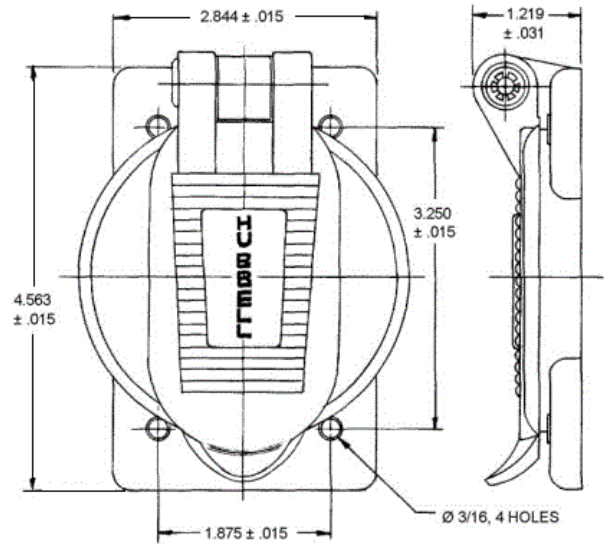


Listings

UL Listed
 CSA Certified

Specifications

Material	RTP
Gasket	Neoprene
Spring	Stainless steel
Hinge Pin	Stainless steel



Online Resources

Customer Use Drawing
 eCatalog
 Installation Instructions

Dimensions in Inches (mm)

Hubbell Wiring Device-Kellems • Hubbell Incorporated (Delaware) • 40 Waterview Drive • Shelton, CT 06484

Phone (800) 288-6000 • Fax (800) 255-1031 • Specifications subject to change without notice.



CAT. #	COLOR	Ø D
5385-0	GRAY AKZO NOBEL# JW107N	.62 [15.7]
5386-0	GRAY AKZO NOBEL# JW107N	.84 [21.3]
5387-0	GRAY AKZO NOBEL# JW107N	1.03 [26.2]

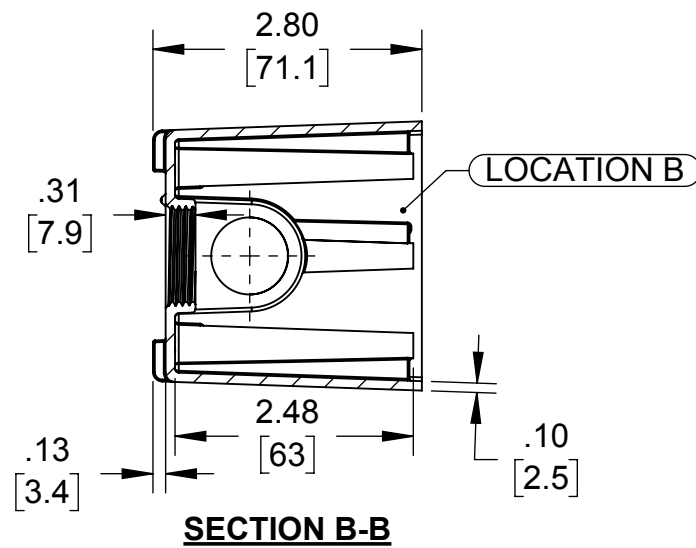
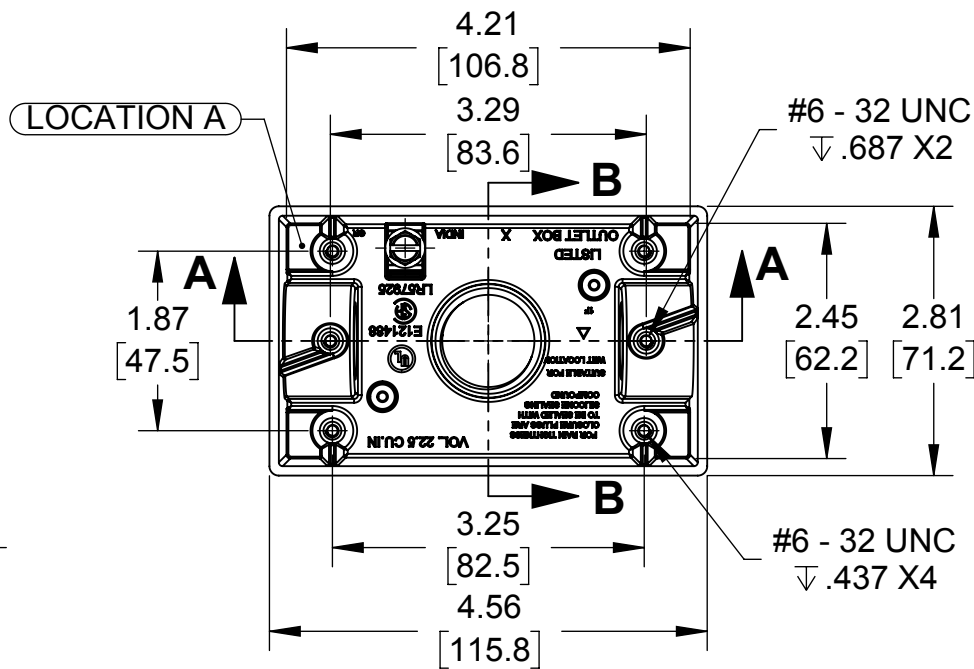
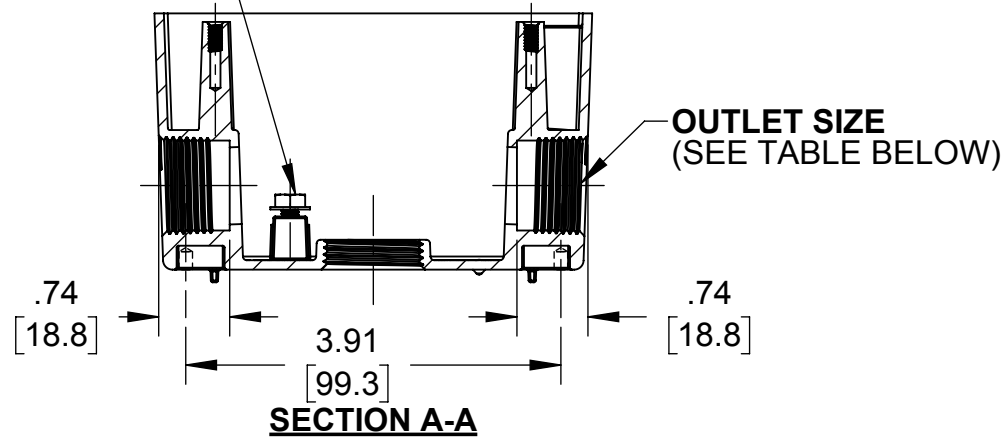
#8 - 32 UNC-2A X 1/4" CROSS RECESSED UNDERCUT FLAT COUNTERSUNK HEAD, SELF TAPPING SCREW-TYPE F (QTY. 2)

SINGLE GANG DEEP BOX

CLOSURE PLUG (QTY. 2)

BOX MOUNTING LUG (QTY. 2)

#10-32UNF-2A X 3/8" HEX WASHER SELF TAPPING TRILOBULAR GROUNDING SCREW



LIST OF PARTS		
DESCRIPTION	MATERIAL	FINISH
SINGLE GANG DEEP BOX	DIE-CAST ALUMINUM	PAINT
GROUNDING SCREW	C1022 STEEL	GREEN ZINC AERODITE
CLOSURE PLUG	LEXAN/ZINC	SEE TABLE
MOUNTING LUG	CRCA	N/A
MOUNTING LUG SCREW	C1022 STEEL	.00015" ZINC PASSIVATION

GRAY BOX	CLOSURE PLUG 1/2" & 3/4" NPT	
	MATERIAL	FINISH
PRIMARY	LEXAN	GRAY
ALTERNATE	ZINC	NATURAL

GRAY BOX	CLOSURE PLUG 1" NPT	
	MATERIAL	FINISH
PRIMARY	ZINC	NATURAL

SYMBOL	INITIAL RELEASE	S.J.	07/12/17
REVISION DESCRIPTION	APP	DATE	

THE DESIGN AND DIMENSIONS OF THE PRODUCT SHOWN ON THIS DRAWING ARE SUBJECT TO CHANGE WITHOUT NOTICE

TITLE:
SINGLE GANG DEEP WITH 3-HOLE RECT. BOX

OUTLETS			
CAT. #	OUTLET SIZE	OUTLET LOCATION	OUTLET QTY.
5385-0	1/2" - 14 NPT	A,B & C	1
5386-0	3/4" - 14 NPT	A,B & C	1
5387-0	1" - 11.5 NPT	A,B & C	1

TOLERANCE UNLESS OTHERWISE SPECIFIED
.XX DECIMAL ±.015
.XXX DECIMAL ±.005
ANGLE ±2°

RACO		
South Bend, Indiana		
DRAWN BY:	F.P.	SCALE:
APP. BY:	S.J.	1:2
DATE:	07/12/2017	

- NOTES:
- ALL DIMENSIONS ARE IN INCHES AND [MILLIMETERS]
 - BOX VOLUME: 22.50 IN³ [368.7 CM³]
 - UL & CSA LISTED.

FILE NO. :
SINGLE GANG DEEP BOX WITH 3 OUTLETS CUS

DIMENSION SHEET FOR CAT. NO.
SEE CHART

SIZE:
B