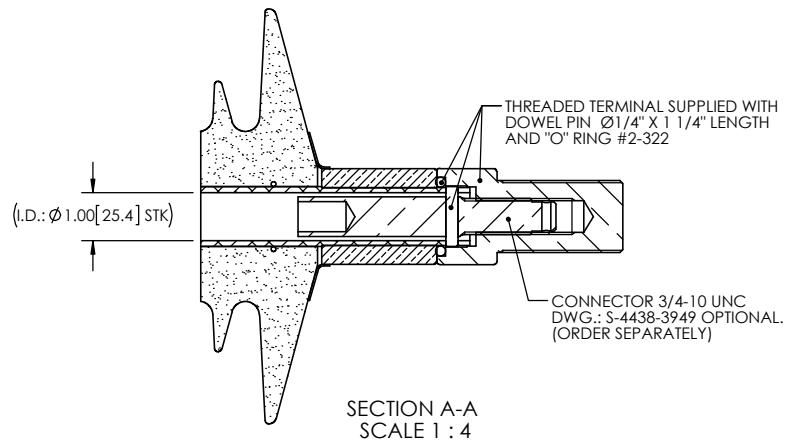
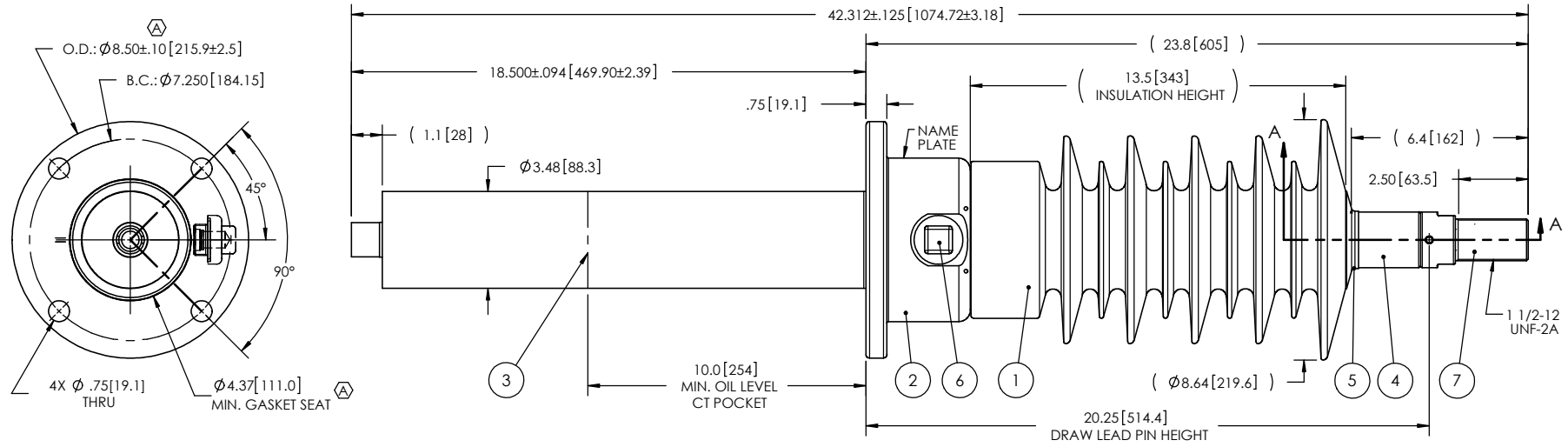


NOTES:

- 1 CREEPAGE DISTANCE: 37.5" / 952mm
- 2 ARC DISTANCE: 15.7" / 399mm
- 3 NOMINAL VOLTAGE: 35kV
- 4 NOMINAL CURRENT: 400A
- 5 VOLTAGE WITHSTAND, 60 sec.: 95kV
- 6 BIL : 200kV
- 7 ROUTINE TEST ACCORDING TO: CSA C88.1-96
- 8 MAX. TORQUE APPLIED ON FLANGE BOLTS: 40 lbf · ft / 54.2 N · m
- 9 WEIGHT: 42 lb / 19.1 Kg

REVISIONS					
ZONE	REV.	DESCRIPTION	DRAWN BY	DATE	APPR.
A2 E6 C5 C4	A	ADD THE "SDC" DESIGNATION TO THE BUSHING NAME. ADD THE MINIMUM GASKET SEAT DIMENSION. INCREASE THE TOLERANCES ON THE FLANGE OUTSIDE DIAMETER. THE TUBE AND THE CAP CHANGE FROM BRASS TO ALUMINUM.	J. CLICHE	2016-12-15	Y.V.



ITEM NO.	QTY	DRAWING NO.	PART NO.	DESCRIPTION	NOTE / MATL
7	1	S-4831-4209-0		THREADED TERMINAL KIT	COPPER
6	1	S-1001-2022		CAPACITANCE TAP ASSEMBLY	ALUMINUM
5	1	S-1344-0162-1		CAP	ALUMINUM
4	1	S-7282-6868		TUBE ASSEMBLY	ALUMINUM
3	1	S-6882-6542		SHIELD ASSEMBLY	COPPER
2	1	S-5237-5007		FLANGE	ALUMINUM
1	1	S-4022-9084	-001	CASTING, CYCLOALIPHATIC RESIN	EC-APG-02

PARTS LIST

GENERAL TOLERANCES (UNLESS OTHERWISE SPECIFIED) X. ± 0.125 .X ± 0.094 .XX ± 0.063 .XXX ± 0.031 ANGLES $\pm 0.25^\circ$ RADIUS ± 0.031		ElectroComposites™ solid HV bushings solution	
REMOVE BURRS AND BREAK SHARP EDGES DIMENSIONS ARE IN INCHES (UNLESS OTHERWISE SPECIFIED)		TITLE: \varnothing SDC® BUSHING 35kV 400A MODEL: 200-004-T-590-01	
DRAWN BY: J. CLICHE CHECK BY:	DATE: 2011/10/27	FORMAT: A CAGE CODE:	DRAWING NO.: S-7282-6867 REVISION: A
PROJECT NO.: PROJECT MANAGER:	SCALE: 1:6	GENERATED BY: SolidWorks 2013	SHEET: 1 of 1

This drawing is the proprietary property of Electro Composites (2008) ULC, not part of the public domain, and is issued with the express understanding and agreement that it is not to be reproduced or copied in whole or in part or issued for furnishing information to others, or used directly or indirectly, in any way detrimental to the interest of Electro Composites (2008) ULC and is to be returned upon request by Electro Composites (2008) ULC. All Rights Reserved.