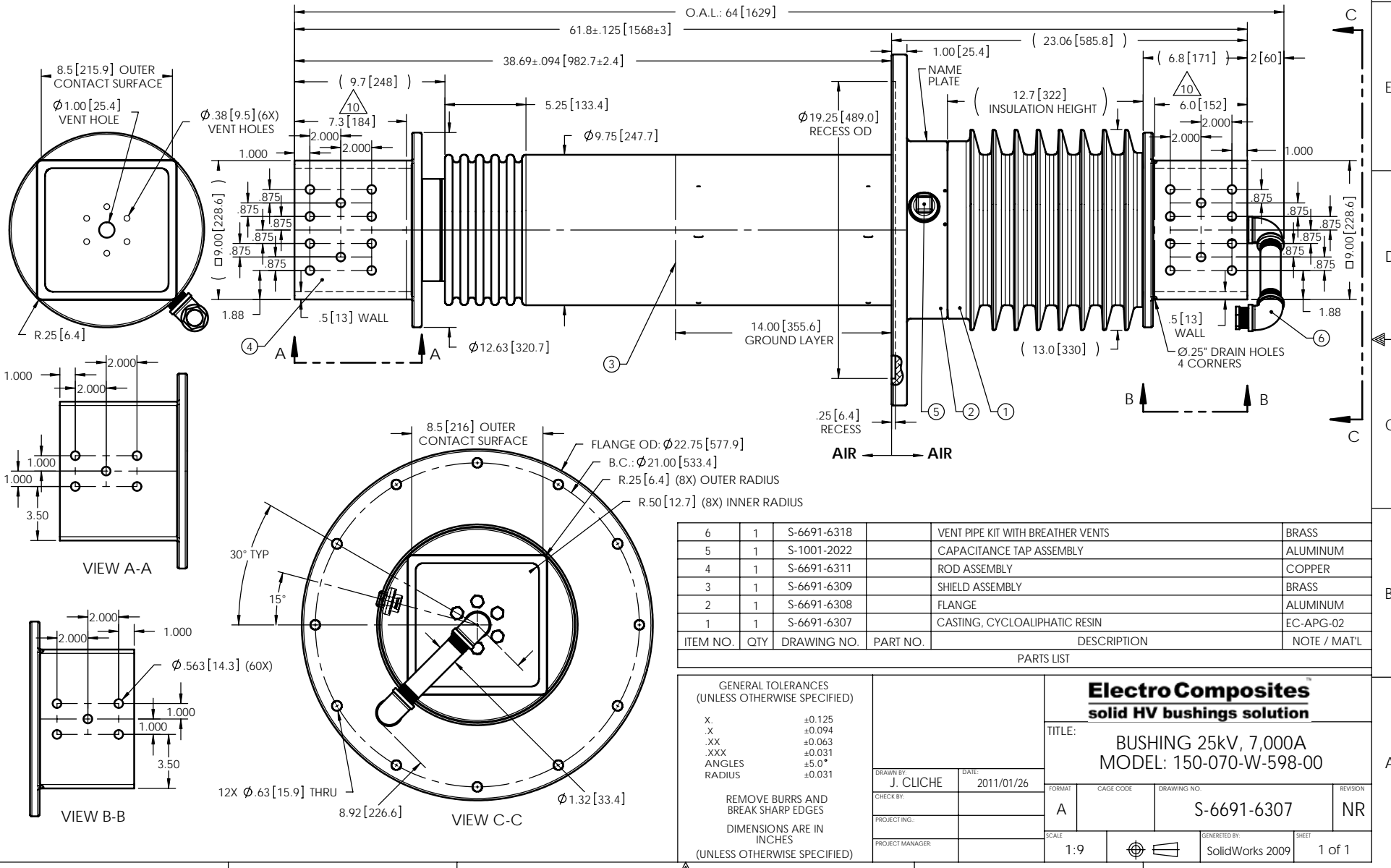


NOTES:

- | | | | |
|----|--|------------------------|-----------------------|
| 1 | CREEPAGE DISTANCE: | OUTSIDE: 33.8" / 859mm | INSIDE: 20.7" / 526mm |
| 2 | ARC DISTANCE: | OUTSIDE: 13.4" / 340mm | INSIDE: 17.9" / 455mm |
| 3 | NOMINAL VOLTAGE: | 25kV | |
| 4 | NOMINAL CURRENT: | 7,000A | |
| 5 | WITHSTAND VOLTAGE AT 60 sec.: | 60kV | |
| 6 | B.I.L.: | 150kV | |
| 7 | ROUTINE TEST ACCORDING TO: | IEEE C57.19.00 & .01 | |
| 8 | MAX. TORQUE APPLIED ON FLANGE BOLTS: | 70 lbf x ft | |
| 9 | WEIGHT: | 450.5 lb / 204.34 Kg | |
| 10 | SILVER PLATED BOTH END, AS PER ASTM B700, TYPE 1, GRADE D, CLASS N, NO NICKEL LAYER, FROM 13 TO 20 MICROMETERS THICKNESS | | |

REVISIONS					
ZONE	REV.	DESCRIPTION	DRAWN BY	DATE	APPR.

This drawing is the proprietary property of Electro Composites (2008) ULC, not part of the public domain, and is issued with the express understanding and agreement that it is not to be reproduced or copied in whole or in part or issued for furnishing information to others, or used directly or indirectly, in any way detrimental to the interest of Electro Composites (2008) ULC and is to be returned upon request by Electro Composites (2008) ULC. All Rights Reserved.



ITEM NO.	QTY	DRAWING NO.	PART NO.	DESCRIPTION	NOTE / MAT'L
6	1	S-6691-6318		VENT PIPE KIT WITH BREATHER VENTS	BRASS
5	1	S-1001-2022		CAPACITANCE TAP ASSEMBLY	ALUMINUM
4	1	S-6691-6311		ROD ASSEMBLY	COPPER
3	1	S-6691-6309		SHIELD ASSEMBLY	BRASS
2	1	S-6691-6308		FLANGE	ALUMINUM
1	1	S-6691-6307		CASTING, CYCLOALIPHATIC RESIN	EC-APG-02

GENERAL TOLERANCES (UNLESS OTHERWISE SPECIFIED) X. ±0.125 .X ±0.094 .XX ±0.063 .XXX ±0.031 ANGLES ±5.0° RADIUS ±0.031		REMOVE BURRS AND BREAK SHARP EDGES DIMENSIONS ARE IN INCHES (UNLESS OTHERWISE SPECIFIED)		Electro Composites solid HV bushings solution	
DRAWN BY: J. CLICHE CHECK BY: PROJECTING: PROJECT MANAGER:		DATE: 2011/01/26 SCALE: 1:9 GENERATED BY: SolidWorks 2009		TITLE: BUSHING 25kV, 7,000A MODEL: 150-070-W-598-00 DRAWING NO.: S-6691-6307 REVISION: NR	