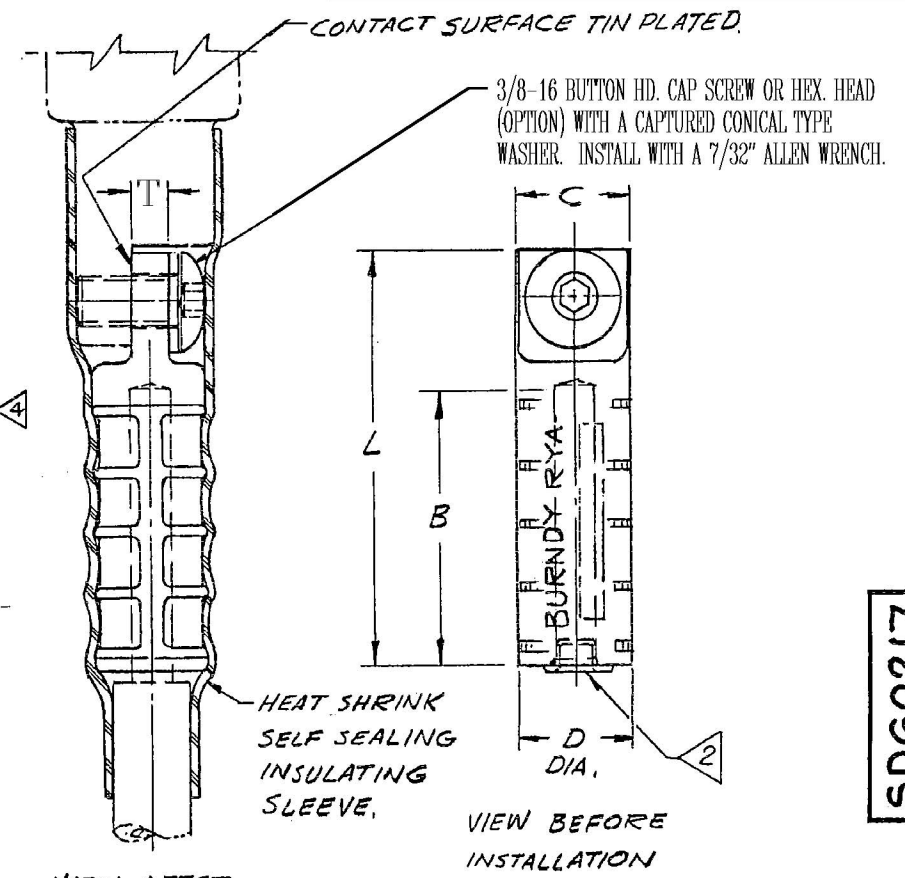


L12090S

ACCOMMODATES

ALUM.		CU.		CATALOG NO.	B	C	D	L	T	EEI DIE INDEX	INSTALLATION DATA						
											HYTOOL	HYPRESS					
					DIE SET WITH NO OF CRIMPS												
					MD6-8	Y35	Y34A										
#4 STR (.232)	#4 STR (.232)			RYA4UC													
#3 STR (.260)	#3 STR (.260)																
#4 STR (.213) COMP. ③	#2 SOL (.258)																
#2 STR (.292)	#2 STR (.292)																
#7 STR (.328) (.332)	#1 STR (.328) (.332)			RYA2UC ⑥	.96	.65	.65	2.00	.21	8A	W-243	2	U243	1	A-243	1	
#2 STR (.268) COMP. ③	#1 STR (.301) COMP. ③										W-BG	1	UK5/8-1	3			
#1 STR (.301) COMP. ③	#1/0 SOL (.325)										BG	3	U-BG	1			
1/0 STR (.368)	1/0 STR (.368)			RYA25UC													
1/0 STR (.340) COMP. ③	2/0 SOL (.365) ③																
#2 SOL (.258) EC-0				RYA2WAC	1.42			2.50			BG	5	UK5/8-1	5			
1/0 SOL (.325) EC-0				RYA75AC													
2/0 STR (.414)	2/0 STR (.419)			RYA26UC	1.50			2.62			WKB40	5	U249	2	A249	2	
2/0 STR (.382) COMP. ③											W249	3	UK840	3			
3/0 STR (.464), 4/0 SOL (.460) EC-0	3/0 STR (.470)			RYA27UC	1.62	.91	.91	2.74	.31	11A	W249	4	U249	2	A249	2	
3/0 STR (.428) COMP. ③											WKB40	7	UK840	4			
4/0 STR (.522)	4/0 STR (.528)			RYA28UC													
250 MCM (.523) COMP. ③																	
4/0 STR (.481) COMP. ③																	
250 MCM (.523) COMP. ③	250 MCM (.575)			RYA29UC ④	2.00	1.11	1.11	3.15	.31	13A			U705	2			
250 MCM (.575)														U299	2		
336.4 MCM (.666)				RYA31AC										U655	3		
350 MCM (.681)														UK1/8-1	2		
300 MCM (.630)																	
350 MCM (.618) COMP. ③																	
336.4 MCM (.607) COMP. ③																	
300 MCM (.573) COMP. ③																	



- NOTES:
- ① HEX HEAD BOLT WITH CAPTURED CONICAL WASHER MAY BE PURCHASED AS AN OPTION BY ADDING "HEX" SUFFIX TO THE CAT. NO. (FOR EXAMPLE RYA4UCHEX). CAT. NO. INCLUDES ONE EACH: TERMINAL CAP SCREW OR HEX. HEAD (OPTION) WITH A CAPTURED CONICAL WASHER, AND INSULATING SLEEVE. INSTALLATION DATA AND INSTRUCTION SHEET PROVIDED. ALL ARE PACKAGED IN A CLEAR POLYBAG.
 - ② BARREL PARTIALLY FILLED WITH PENETROX AND SEALED. THIS PENETROX IS COMPATIBLE WITH INSULATION.
 - ③ HARDNESS H14 THRU H19 (HALF HARD OR HARDER)
 - ④ OVERLAP CRIMP
 - ⑤ 4/0 SOL. EC-0 USE ALL DIES LISTED EXCEPT EEI 11A.

NOTES CONTD., HYPRESS DATA

- ⑥ FOR RYA2UC USE HYPRESS Y46 OR Y46C DIE SET U-BG 1 CRIMP, USE ADAPTOR P-UADP.
- ⑦ FOR RYA29UC USE HYPRESS Y46 OR Y46C DIE SET U655 3 CRIMPS. USE ADAPTOR P-UADP.
- ⑧ HEX HEAD BOLT WITH CAPTURED FLAT WASHER MAY BE PURCHASED AS AN OPTION BY ADDING "HEX1" SUFFIX TO THE CATALOG NUMBER. FOR A STAINLESS STEEL HEX HEAD BOLT, ADD HEX1SS SUFFIX TO CAT NO.
- ⑨ HEX HEAD BOLT WITH FLAT WASHER (NON-CAPTIVE) MAY BE PURCHASED AS AN OPTION BY ADDING "HEX2" SUFFIX TO THE CATALOG NUMBER. FOR A STAINLESS STEEL HEX HEAD BOLT, ADD HEX2SS SUFFIX TO CAT NO.
- ⑩ HEX HEAD BOLT WITH CONICAL WASHER (NON-CAPTIVE) MAY BE PURCHASED AS AN OPTION BY ADDING "HEX3" SUFFIX TO THE CATALOG NUMBER. FOR A STAINLESS STEEL HEX HEAD BOLT, ADD HEX3SS SUFFIX TO CAT NO.

RDM 4-28
 FOR USE WITH RDM 6-28, RDM 5-28T
 RDM 8-28, RDM 7-28T
 REFERENCE: SC 60327, SC 62435,
 SD 62952, SD 63044
 SC 74574

URD MOLE TAP ASSY.	
CAT. NO. RYA-UC (TABLE)	SCALE
DRAWN T.A.L. 4-15-66	CHECKED MJM 5-4-66
DES. APPROV. FID 5-4-66	
PROD. APPROV.	
DRAWING NO.	REV.
SD60217	17

