



**PCORE**  
ELECTRIC

**TITLE**  
SEISMICALLY ENHANCED TEST (SET) TERMINAL

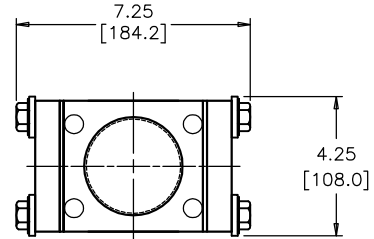
<b>DWG.</b>	<b>CATALOG NUMBER</b>
SD	B-63035-AF

**TOP TERMINAL**  
3-12 THREAD MALE

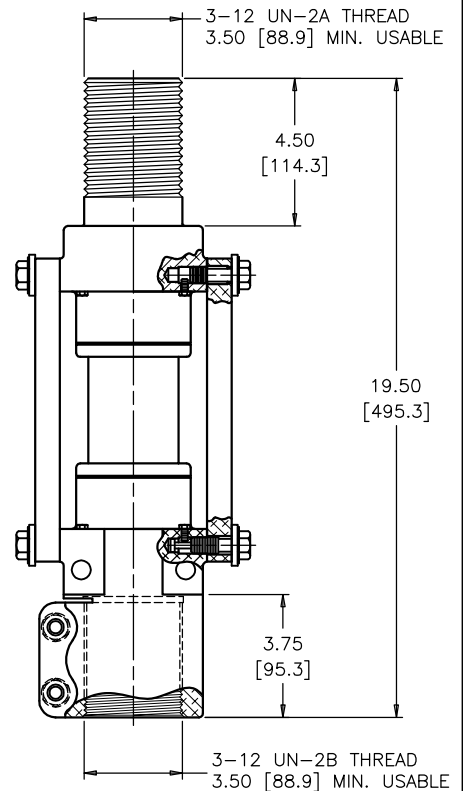
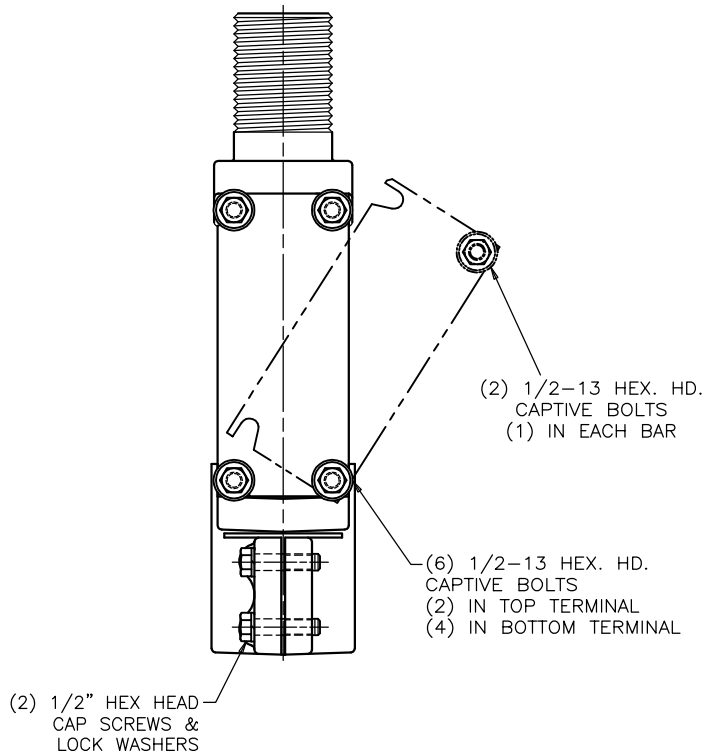
**CURRENT RATING**  
3000 A

<b>DATE</b>	2-18-15	<b>REV. DATE</b>	9-21-17
<b>REF.</b>			

**BOTTOM TERMINAL**  
3-12 THREAD FEMALE



UNITS ARE SHIPPED WITH NO-OX GREASE APPLIED TO SIDE BLADE CONTACTS. IT IS RECOMMENDED THAT THE CONTACTS BE CLEANED AND GREASED PERIODICALLY USING AN ELECTRICAL CONTACT OXIDATION INHIBITING GREASE SPECIFICALLY MADE FOR ALUMINUM CONTACTS.



BOLTS ARE STAINLESS STEEL  
HARDWARE IS ALUMINUM

DIMENSIONS IN INCHES [MILLIMETERS]

**REVISION** UPDATED NOTES

**SCALE** 1/4

NOTE TO PURCHASER:  
ALL SALES OF PCORE PRODUCTS ARE SUBJECT  
TO OUR STANDARD TERMS AND CONDITIONS  
AND THE LIMITED WARRANTIES THEREUNDER