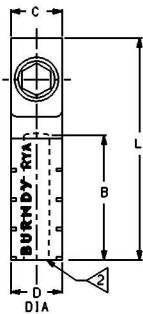


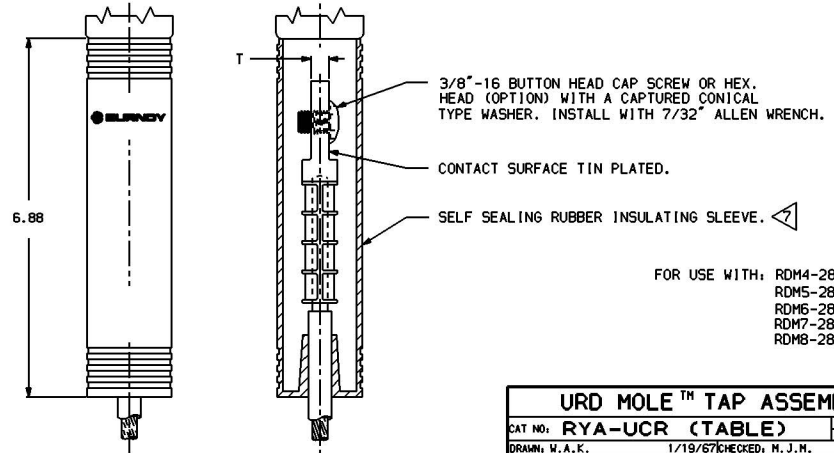
CATALOG NUMBER	ACCOMMODATES		CONDUCTOR INSULATION O.D. (6)	DIMENSIONS					INSTALLATION TOOLING (# CRIMPS)										WIRE STRIP LENGTH			
	ALUMINUM	CU.		B	C	D DIA.	L	T	DIE INFORMATION			MECHANICAL RATCHET		HYDRAULIC						DIELESS (# CRIMPS)		
									COLOR CODE	EE1 DIE INDEX	DIE INDEX	TYPE	OUR840	MD6 MD7	Y35, Y39 Y750, BAT35 BAT750	Y46	Y45	Y48B			Y60BHU	
RYA8UCR	8 STR. (.146) 6 SOL. (.162)	8 STR. (.146) 6 SOL. (.162)		.96 [24]	.65 [17]	.65 [17]	2.00 [51]	.21 [5]	----	----	B6	DIE SET	XB6 (3) XNB6 (2)	PERM 6R W-B6 (1) W243 (2)	U-B6 (1)	U-B6 (1)	U-B6 (1)	----	----	----	----	1-1/16"
RYA6UCR	6 STR. (.184) 4 SOL. (.204)	6 STR. (.184) 4 SOL. (.204)	.314-.468						----	8A	243	DIE SET	----	----	U243 (1)	U243 (1)	U243 (1)	C243 (1)	L243 (1)	----	----	
RYA4UCR	#4 STR. (.232) #3 STR. (.260) #4 STR. (.213) COMP. #2 SOL. (.258)	#4 STR. (.232) #3 STR. (.260) #2 SOL. (.258)							----	----	B6	DIE SET	XB6 (3) XNB6 (2)	PERM 6R W-B6 (1)	U-B6 (1)	U-B6 (1)	U-B6 (1)	----	----	----	----	
RYA2UCR	#2 STR. (.292) #1 STR. (.328) #2 STR. (.268) COMP. #1 STR. (.301) COMP. #1 SOL. (.325)	#2 STR. (.292) #1 STR. (.328) #1 STR. (.328) #1 SOL. (.325)	.377-.537						----	8A	243	DIE SET	----	W243 (2)	U243 (1)	U243 (1)	U243 (1)	C243 (1)	L243 (1)	----	----	
RYA25UCR	1/0 STR. (.368) 1/0 STR. (.340) COMP. 2/0 SOL. (.365)	1/0 STR. (.368)	.471-.650	.96 [24]			2.00 [51]		----	----	K5/8	DIE SET	----	----	UK5/8IT (3)	UK5/8IT (3)	UK5/8IT (3)	----	----	----	----	1-1/16"
RYA2WACR	#2 SOL. (.258) EC-0	----	.314-.468	1.42 [36]					----	----	B6	DIE SET	XB6 (5) XNB6 (3)	PERM 6R W-B6 (1)	U-B6 (1)	U-B6 (1)	U-B6 (1)	----	----	----	----	1-1/2"
RYA75ACR	1/0 SOL. (.325) EC-0	----	.377-.537		.65 [17]	.65 [17]		.21 [5]	----	----	K5/8	DIE SET	----	----	UK5/8IT (5)	UK5/8IT (5)	UK5/8IT (5)	----	----	----	----	
RYA26UCR	2/0 STR. (.414) 2/0 STR. (.382) COMP. 3/0 SOL. (.410) EC-0	2/0 SOL. (.419)	.471-.698	1.50 [38]	.91 [23]	.91 [23]	2.62 [67]	.31 [8]	----	11A	249 K840	DIE SET	X249 (6) X840 (5)	W249 (3) WK840 (5)	U249 (2) UK840T (3)	U249 (2) UK840T (3)	U249 (2) UK840T (3)	C249 (1) UK840T (1)	L249 (1)	----	----	1-9/16"
RYA27UCR	3/0 STR. (.464) 3/0 STR. (.428) COMP.	3/0 STR. (.470)	.565-.752	1.62 [41]			2.74 [70]		----	11A	249 K840	DIE SET	X249 (8) X840 (7)	W249 (4) WK840 (7)	U249 (2) UK840T (4)	U249 (2) UK840T (4)	U249 (2) UK840T (4)	C249 (1)	L249 (1)	----	----	1-11/16"
RYA28UCR	4/0 STR. (.481) COMP. 250 kmil (.523) COMP.	4/0 STR. (.528)	.625-.813		.91 [23]	.91 [23]			BROWN	----	299	BROWN DIE SET	----	----	U31ART (2)	U31ART (2)	U31ART (2)	C31AR (1)	L31ART (1)	HYDRAULIC: Y644M (1) BAT644M (1)	----	2-1/16"
RYA29UCR	250 kmil (.575) 250 kmil (.523) COMP.	250 kmil (.575)	.691-.938	2.00 [51]	1.11 [28]	1.11 [28]	3.15 [80]	.31 [8]	----	----	299	NEST INDENTOR	----	----	P35D (2) P48PR1	----	----	C35D (2) Y48PR1	----	----	----	
RYA31ACR	350 kmil (.681) 336.4 kmil (.666) 300 kmil (.630) 350 kmil (.618) COMP. 336.4 kmil (.609) COMP. 300 kmil (.573) COMP.	----	.745-.960	2.00 [51]	1.11 [28]	1.11 [28]	3.15 [80]	.31 [8]	----	13A	655	DIE SET	----	----	U655 (3)	U655 (3)	U655 (3)	----	----	----	----	
									----	----	705	DIE SET	----	----	U705 (2)	U705 (2)	U705 (2)	----	----	----	----	

NOTES:

- ▷ HEX HEAD BOLT WITH CAPTURED CONICAL WASHER MAY BE PURCHASED AS AN OPTION BY ADDING "HEX" SUFFIX TO THE CATALOG NUMBER. (FOR EX. RYA4UCRHEX). CATALOG NUMBER INCLUDES ONE EACH; TERMINAL, CAP SCREW OR HEX. HEAD (OPTION) WITH A CAPTURED CONICAL PRESSURE TYPE WASHER AND A PRE-LUBRICATED RUBBER INSULATING SLEEVE. INSTALLATION DATA AND INSTALLATION INSTRUCTIONS PROVIDED. ALL ARE PACKAGED IN A CLEAR POLYBAG.
- ▷ BARREL PARTIALLY FILLED WITH PENETROX™ AND SEALED. PENETROX™ IS COMPATIBLE WITH INSULATION.
- ▷ HARDNESS H14 THRU H19 (HALF HARD OR HARDER).
- ▷ OVERLAP CRIMPS.
- ▷ 3/0 SOL. EC-0 USE ALL DIES LISTED EXCEPT EE1 11A.
- ▷ CONDUCTOR INSULATIONS WITH SMOOTH ROUND DIAMETERS.
- ▷ REQUIRES RUBBER BUSHING INSERT ON #6 STR. WIRE (INCLUDED).
- ▷ HEX HEAD BOLT WITH CAPTIVE FLAT WASHER MAY BE PURCHASED AS AN OPTION BY ADDING "HEX1" SUFFIX TO THE CATALOG NUMBER.
- ▷ HEX HEAD BOLT AND FLAT WASHER (NON-CAPTIVE) MAY BE PURCHASED AS AN OPTION BY ADDING "HEX2" SUFFIX TO THE CATALOG NUMBER.
- ▷ HEX HEAD BOLT WITH CONICAL WASHER (NON-CAPTIVE) MAY BE PURCHASED AS AN OPTION BY ADDING "HEX3" SUFFIX TO THE CATALOG NUMBER.
- 11. STAINLESS STEEL HEX HEAD BOLT MAY BE PURCHASED AS AN OPTION BY ADDING "SS" SUFFIX TO THE HEX-SUFFIX. EXAMPLE: RYA2UCHEX3SS.
- ▷ CATALOG #PT6515 ADAPTOR IS REQUIRED TO USE "U" DIES IN Y45 SERIES TOOLS.
- ▷ CATALOG #PUADP-1 ADAPTOR IS REQUIRED TO USE "U" DIES IN Y46 SERIES TOOLS.
- 14. DIMENSION IN BRACKETS [ ] ARE IN MILLIMETERS ROUNDED OFF TO THE NEAREST MILLIMETER, UNLESS OTHERWISE NOTED, AND ARE FOR REFERENCE ONLY.



VIEW BEFORE INSTALLATION



VIEWS AFTER INSTALLATION

FOR USE WITH: RDM4-28  
RDM5-28T  
RDM6-28  
RDM7-28T  
RDM8-28

URD MOLE™ TAP ASSEMBLY	
CAT NO: RYA-UCR (TABLE)	SCALE: N/A
DRAWN: H.A.K. 1/19/97	CHECKED: M.J.H. 1/24/97
DSGN APPVL: F.D.V.	MFG APPVL: N/A
S.A. APPVL: D.VARIO 7/1/96	MKTG APPVL: R.PELLETIER 6/20/96
CAD FILE: SD63044-SHT01	PM REF: N/A
PROJECT: .	MDL REF: N/A
DRAWING NO. SD63044	
SHEET 1 OF 1	

19	3/31/97	RETRAIN TO CAD, ADDED CATALOG NO. RYABCR, ADDED MKTG. & O.A. APPROVAL SIGNATURES (PER FCN 2012)	PL	JLM
REV.	DATE	DESCRIPTION	BY	C'K'D.

REV. 061995