



PCORE
ELECTRIC

TITLE SEISMICALLY ENHANCED TEST (SET) TERMINAL
TWO CORONA RINGS

DWG. CATALOG NUMBER
SD B-63070-22-CF-EE

TOP TERMINAL 6 HOLE NEMA PAD
IN HORIZONTAL POSITION @ 1.75 [44.4] SPACING

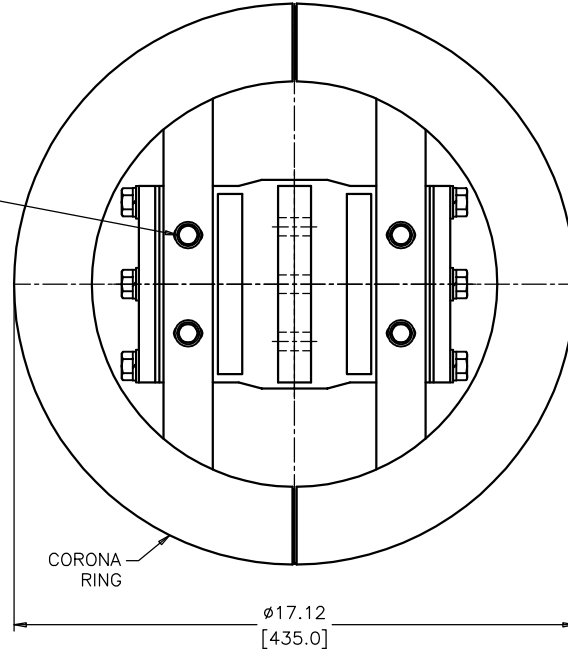
CURRENT RATING
4000 A

BOTTOM TERMINAL 6 HOLE NEMA PAD
IN HORIZONTAL POSITION @ 1.75 [44.4] SPACING

DATE 6-12-14
WEIGHT 120 lbs [54 kg]

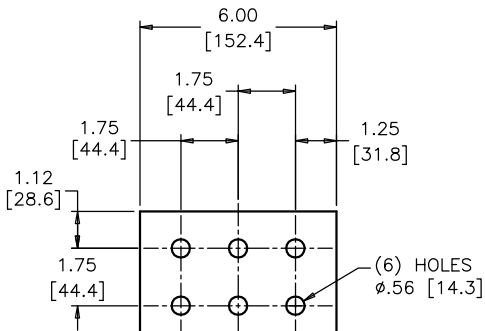
REV. DATE
REF.

(8) 3/8-16 HEX HEAD CAP SCREWS
WITH FLAT WASHERS AND
LOCK WASHERS STAINLESS STEEL

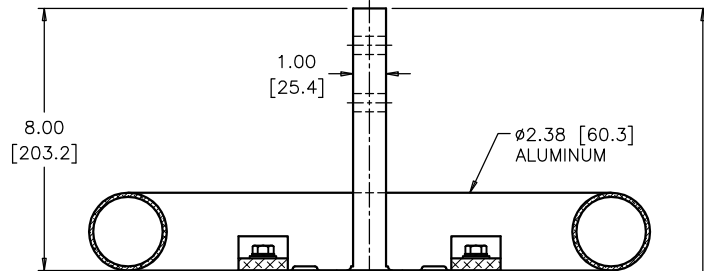


CORONA RING

Ø17.12
[435.0]



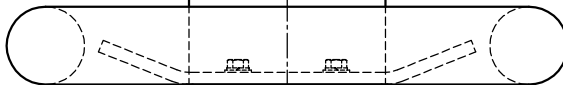
(6) HOLES
Ø.56 [14.3]



Ø2.38 [60.3]
ALUMINUM

8.00
[203.2]

1.00
[25.4]



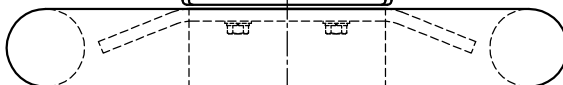
(8) 1/2-13
HEX HEAD
CAPTIVE BOLTS
4 IN EACH BAR

(4) #10-32
ROUND HEAD
CAP SCREWS

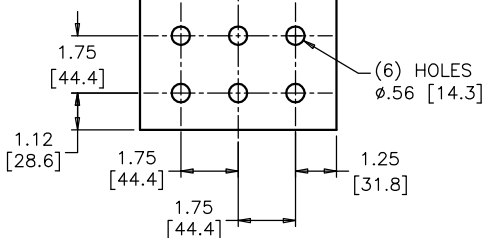
(4) #10-32
HEX HEAD
CAP SCREWS

(4) 1/2-13
HEX HEAD
CAPTIVE BOLTS IN
BOTTOM TERMINAL

28.25
[717.6]



8.00
[203.2]



(6) HOLES
Ø.56 [14.3]

BOLTS ARE EVERDUR AND STAINLESS STEEL
HARDWARE IS HIGH CONDUCTIVITY COPPER - SILVER PLATED

DIMENSIONS IN INCHES [MILLIMETERS]

REVISION

SCALE 1/4

NOTE TO PURCHASER:
ALL SALES OF PCORE PRODUCTS ARE SUBJECT
TO OUR STANDARD TERMS AND CONDITIONS
AND THE LIMITED WARRANTIES THEREUNDER