



TITLE
TEST TERMINAL
TWO CORONA RINGS - TOP & BOTTOM TERMINALS

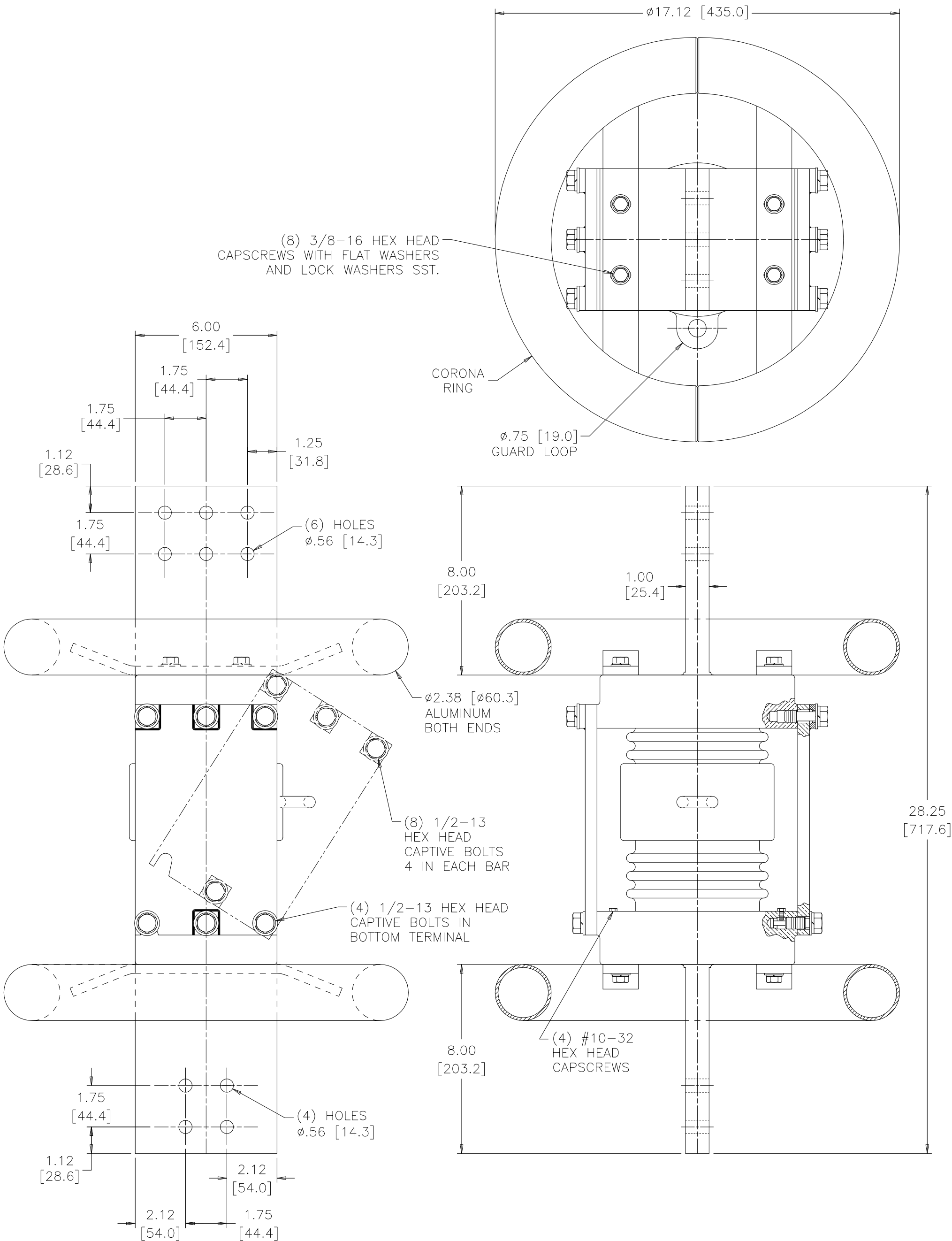
TOP TERMINAL
6 HOLE NEMA PAD
IN HORIZONTAL POSITION @ 1.75 [44.4] SPACING

BOTTOM TERMINAL
4 HOLE NEMA PAD @ 1.75 [44.4] SPACING

DWG.	CATALOG NUMBER	GLAZE COLOR
SD	B-63070-46-EE	BROWN
SD	B-63070-46-EE-70	LT. GRAY

CURRENT RATING
4000 A

DATE	1-7-08	REV. DATE	
REF.			



BOLTS ARE EVERDUR AND STAINLESS STEEL
HARDWARE IS HIGH CONDUCTIVITY COPPER - SILVER PLATED

DIMENSIONS IN INCHES [MILLIMETERS]

REVISION		SCALE 1/4
-----------------	--	------------------

NOTE TO PURCHASER:
ALL SALES OF PCORE PRODUCTS ARE SUBJECT
TO OUR STANDARD TERMS AND CONDITIONS
AND THE LIMITED WARRANTIES THEREUNDER