



PCORE
ELECTRIC

TITLE SEISMICALLY ENHANCED TEST (SET) TERMINAL
ONE CORONA RING ON TOP TERMINAL

DWG. CATALOG NUMBER

SD B-63070-63-CF-E

TOP TERMINAL
TIN PLATED, 6 HOLE NEMA PAD
IN HORIZONTAL POSITION @ 1.75 [44.4] SPACING

CURRENT RATING

5000 A

DATE 7-5-17

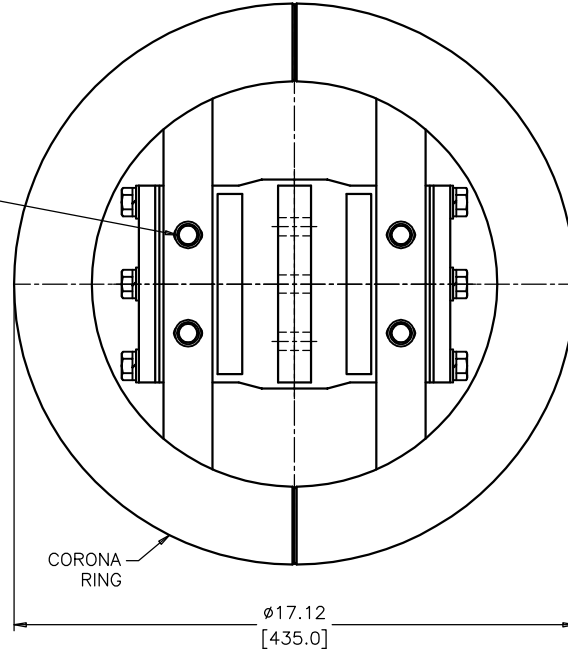
REV. DATE

WEIGHT 113 lbs [51 kg]

REF.

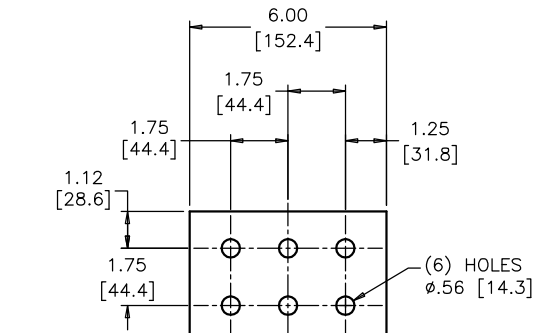
BOTTOM TERMINAL
TIN PLATED, 6 HOLE NEMA PAD
IN HORIZONTAL POSITION @ 1.75 [44.4] SPACING

(4) 3/8-16 HEX HEAD CAP SCREWS
WITH FLAT WASHERS AND
LOCK WASHERS STAINLESS STEEL

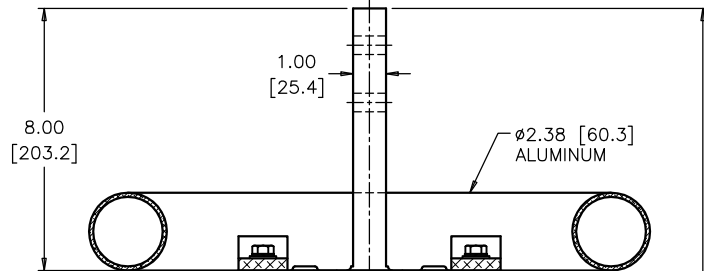


CORONA
RING

Ø17.12
[435.0]



(6) HOLES
Ø.56 [14.3]



Ø2.38 [60.3]
ALUMINUM

8.00
[203.2]

1.00
[25.4]



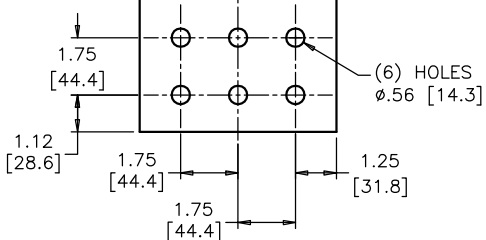
(8) 1/2-13
HEX HEAD
CAPTIVE BOLTS
4 IN EACH BAR

(4) #10-32
ROUND HEAD
CAP SCREWS

(4) #10-32
HEX HEAD
CAP SCREWS

(4) 1/2-13
HEX HEAD
CAPTIVE BOLTS IN
BOTTOM TERMINAL

28.25
[717.6]



(6) HOLES
Ø.56 [14.3]

8.00
[203.2]

BOLTS ARE EVERDUR AND STAINLESS STEEL
HARDWARE IS HIGH CONDUCTIVITY COPPER - TIN PLATED

DIMENSIONS IN INCHES [MILLIMETERS]

REVISION

SCALE 1/4

NOTE TO PURCHASER:
ALL SALES OF PCORE PRODUCTS ARE SUBJECT
TO OUR STANDARD TERMS AND CONDITIONS
AND THE LIMITED WARRANTIES THEREUNDER