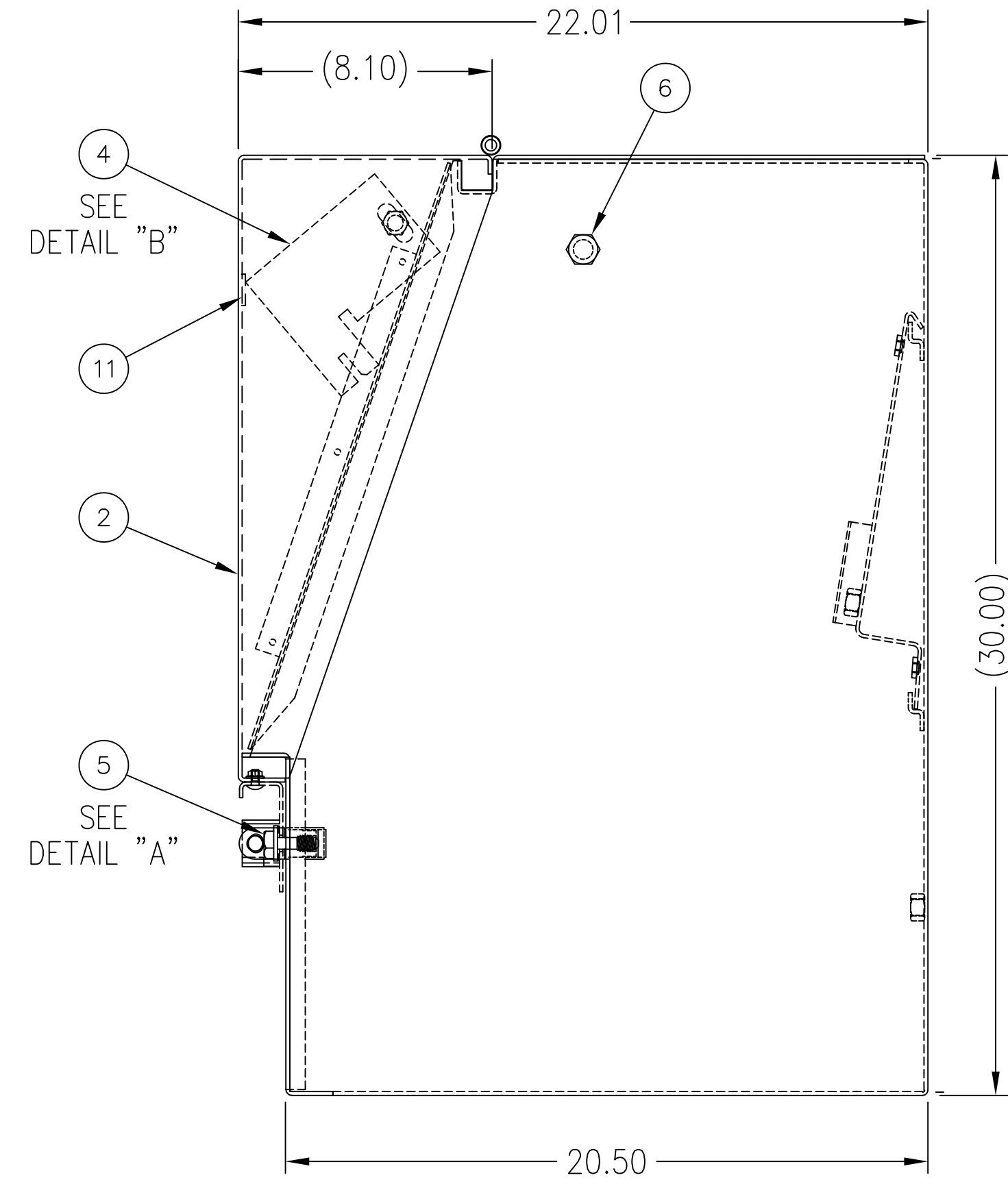
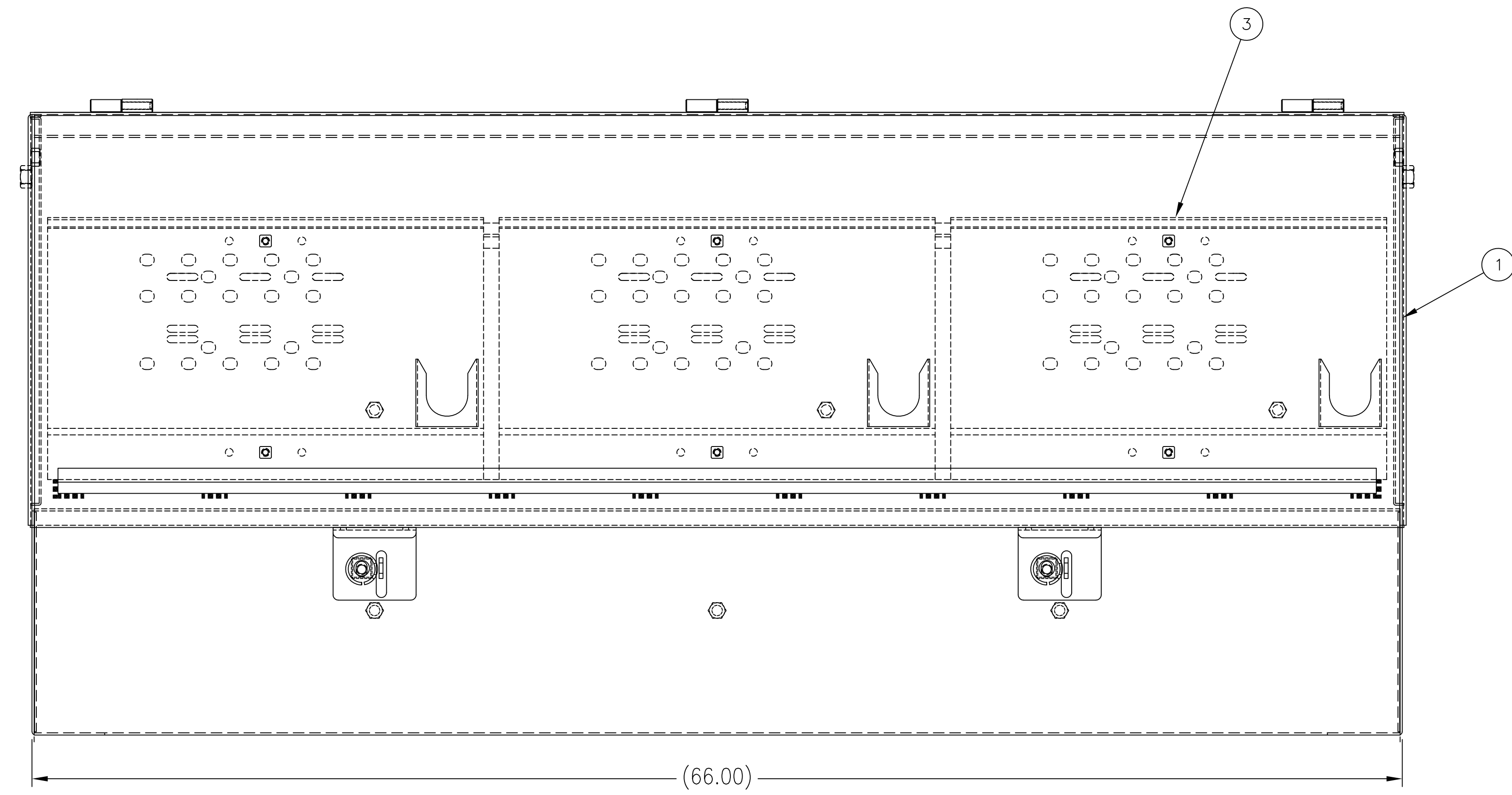
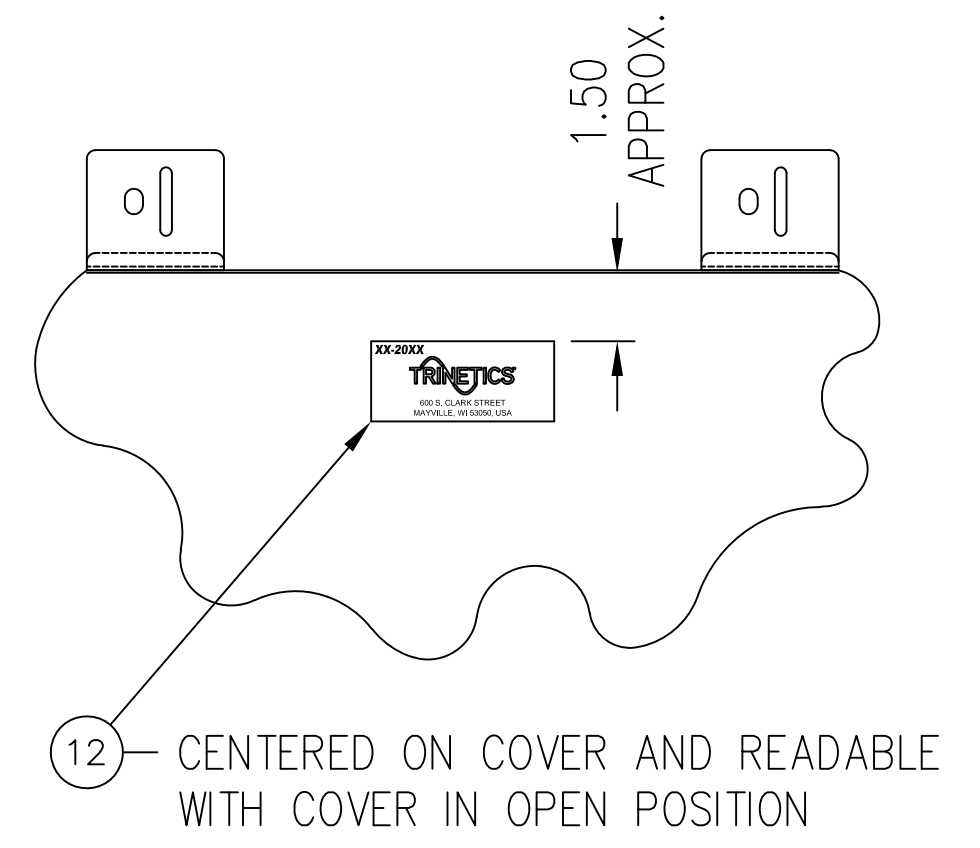
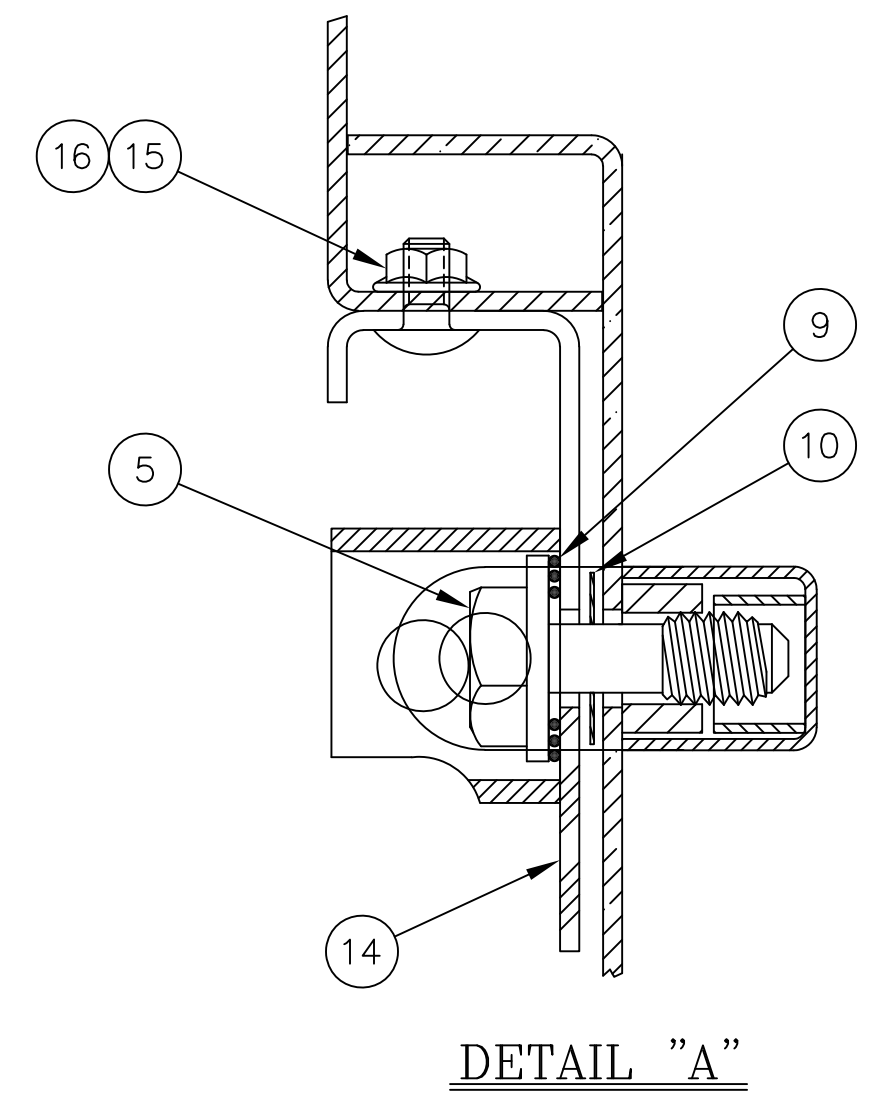
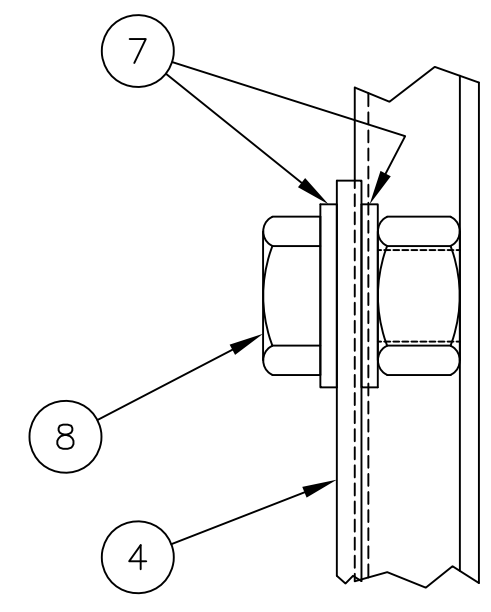
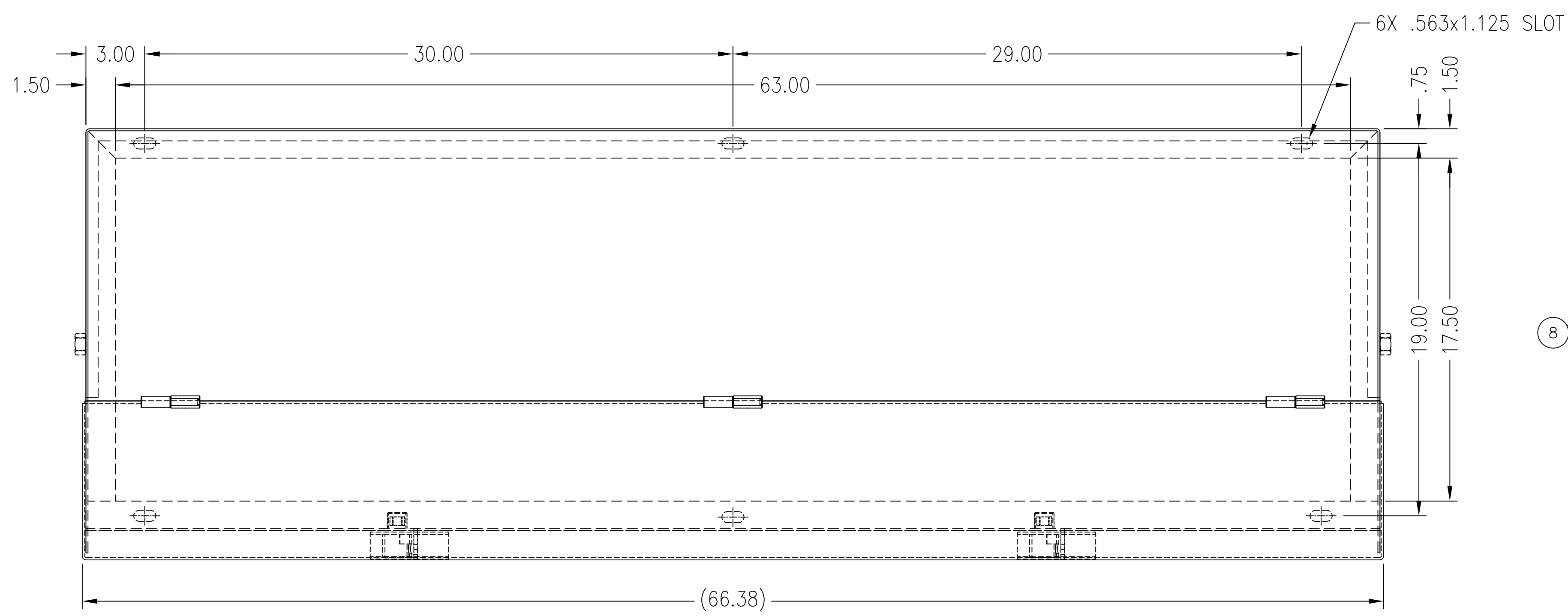


* 63294310ALN COMPONENT

ITEM	QTY	PART #	DESCRIPTION	MATERIAL
1*	1	63488168	BODY WELDMENT	.125 ALUM
2*	1	63488209	COVER WELDMENT	.125 ALUM
3	3	63223227	MOUNTING BAR	12GA HRPO
4	2	63380314	WIND STOP	ALUMINUM
5	2	61216202	PENTA BOLT	STN STL
6	2	612129	CAPLUG	PLASTIC
7	4	92601305	1/2 FLAT WASHER	STN STL
8	2	92138116	1/2-13x1.00 HHCS	STN STL
9	2	612079	1/2 SPRING	ZINC
10	2	612048	1/2 ONE WAY WASHER	ZINC
11	.34'	61208402	NEOPRENE-CLOSED CELL	GASKET
12	1	617204	DECAL NAME & LOGO	STICKER
13*	A/R	617055	MUNSELL GREEN POWDER	PAINT
14	2	63349601	HANDLE WELDMENT 1.38"	ALUMINUM
15	4	9205A108	1/4-20x.50 CARRIAGE BOLT	STN STL
16	4	92251706WX	1/4-20 WHIZ LOCK NUT	STN STL
17	6	92078120FT	5/16-18x1-1/4 HHCS	STN STL



TOL. UNLESS NOTED X ±.06 XX ±.03 XXX ±.015 ANGLES ±1° FLATS ±.005	THIRD ANGLE PROJECTION	THIS DRAWING AND ALL INFORMATION THEREON IS THE SOLE PROPERTY OF TRINETICS. IT MUST NOT BE COPIED, REPRODUCED OR SUBMITTED TO OTHERS WITHOUT WRITTEN AUTHORIZATION. ALL REPRODUCTIONS ARE SUBJECT TO RETURN ON DEMAND. ALL DIMENSIONS ARE IN INCHES UNLESS OTHERWISE SPECIFIED.	TRINETICS
NEXT ASSEMBLY	TH - FINAL ASSEMBLY		
SIMILAR TO 63388042	.125 ALUMINUM 5052-H32		
DRAWN BY PST	DATE 03/02/09	CC366-22TH(R)-AL STANDARD	
WEIGHT	SCALE 15/64	CURRENT ERN 67174	REV 000
SIZE FAMILY ID D P105	SHEET 1 OF 1	PART NUMBER 63294310	

REV	DESCRIPTION	DATE BY
000	NEW RELEASE	03/02/09 PST
67174		

REVISIONS

REFERENCE 63388008