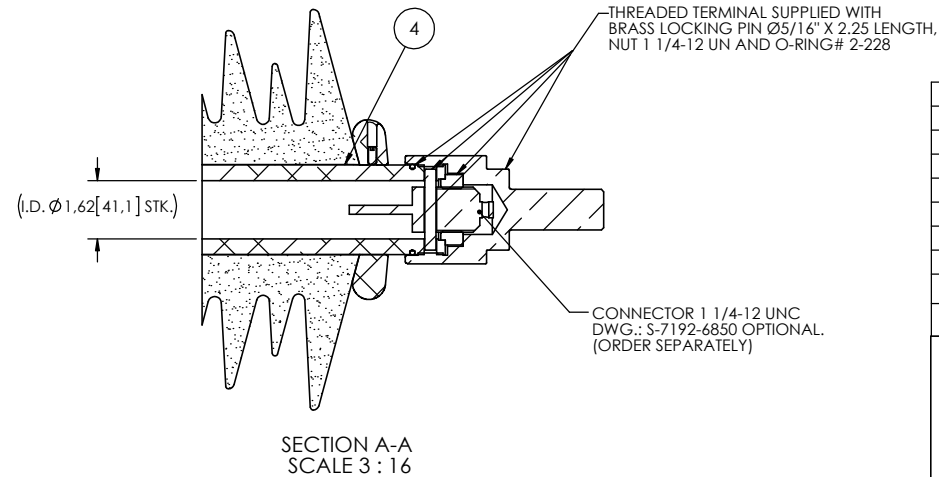
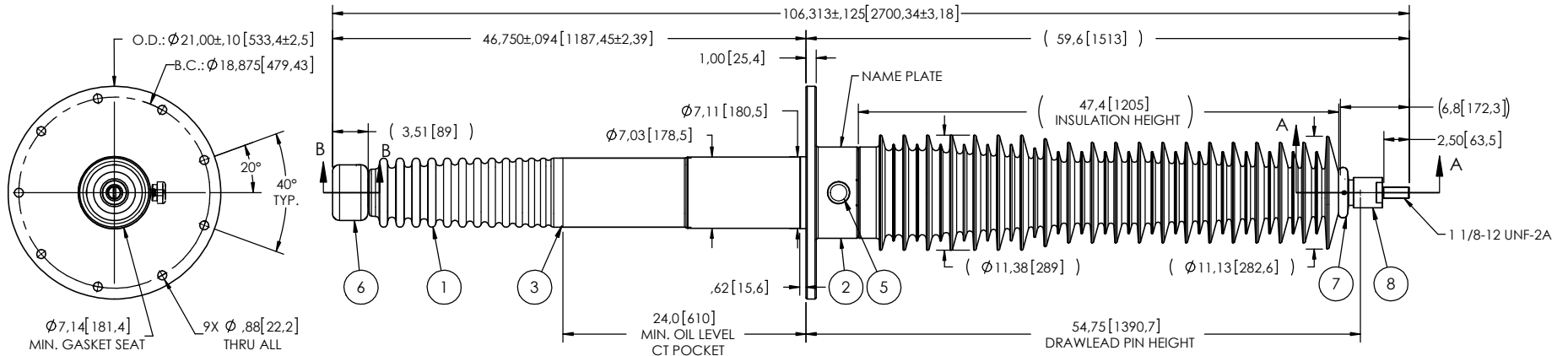
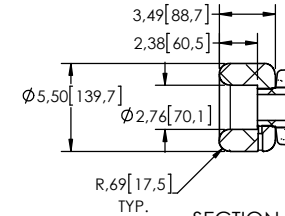


- NOTES:
- 1 CREEPAGE DISTANCE: 148.5" / 3772 mm
  - 2 ARC DISTANCE: 50.7" / 1288 mm
  - 3 NOMINAL VOLTAGE: 115kV
  - 4 NOMINAL CURRENT: 600A
  - 5 WITHSTAND VOLTAGE AT 60 sec.: 260kV
  - 6 B.I.L. : 550kV
  - 7 ROUTINE TEST ACCORDING TO: IEEE C57.19.01
  - 8 MAX. TORQUE APPLIED ON FLANGE BOLTS: 70 lbf x ft / 94.9 N.m
  - 9 WEIGHT: 319 lbs / 144.7 Kg

REVISIONS					
ZONE	REV.	DESCRIPTION	DRAWN BY	DATE	APPR.



This drawing is the proprietary property of Electro Composites (2008) ULC, not part of the public domain, and is issued with the express understanding and agreement that it is not to be reproduced or copied in whole or in part or issued for furnishing information to others, or used directly or indirectly, in any way detrimental to the interest of Electro Composites (2008) ULC and is to be returned upon request by Electro Composites (2008) ULC. All Rights Reserved.

ITEM NO.	QTY	DRAWING NO.	PART NO.	DESCRIPTION	NOTE / MATL
8	1	S-1001-9360-0		THREADED TERMINAL KIT	COPPER
7	1	S-7192-6849		CORONA RING TOP	ALUMINUM
6	1	S-1001-9358		CORONA RING BOTTOM	ALUMINUM
5	1	S-2878-2606		CAPACITANCE TAP ASSEMBLY	ALUMINUM
4	1	S-1001-9357		TUBE ASSEMBLY	ALUMINUM
3	1	S-1001-9356		SHIELD ASSEMBLY	BRASS
2	1	S-6245-6072		FLANGE	ALUMINUM
1	1	S-1001-9355	-001	CASTING, CYCLOALIPHATIC RESIN	EC-APG-02

PARTS LIST					
GENERAL TOLERANCES (UNLESS OTHERWISE SPECIFIED)			<p><b>Electro Composites</b> solid HV bushings solution</p> <p>TITLE: SDC® BUSHING 115kV, 600A MODEL: 550-006-T-633-09</p>		
X.	±0.125				
.X	±0.094			FORMAT	CAGE CODE
.XX	±0.063			A	
.XXX	±0.031			DRAWING NO.	
ANGLES	±0.25°			S-1001-9355	
RADIUS	±0.031			REVISION	NR
REMOVE BURRS AND BREAK SHARP EDGES			DRAWN BY: A.SAVARD DATE: 2017/05/15		
DIMENSIONS ARE IN INCHES (UNLESS OTHERWISE SPECIFIED)			PROJECTING: _____		
			PROJECT MANAGER: _____		
			SCALE: 1:16		
			GENERATED BY: SolidWorks 2013 SHEET: 1 of 1		