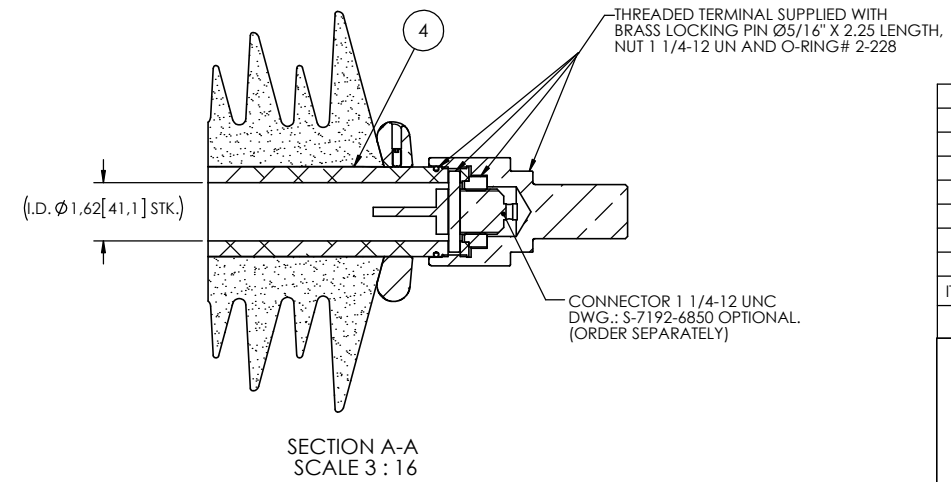
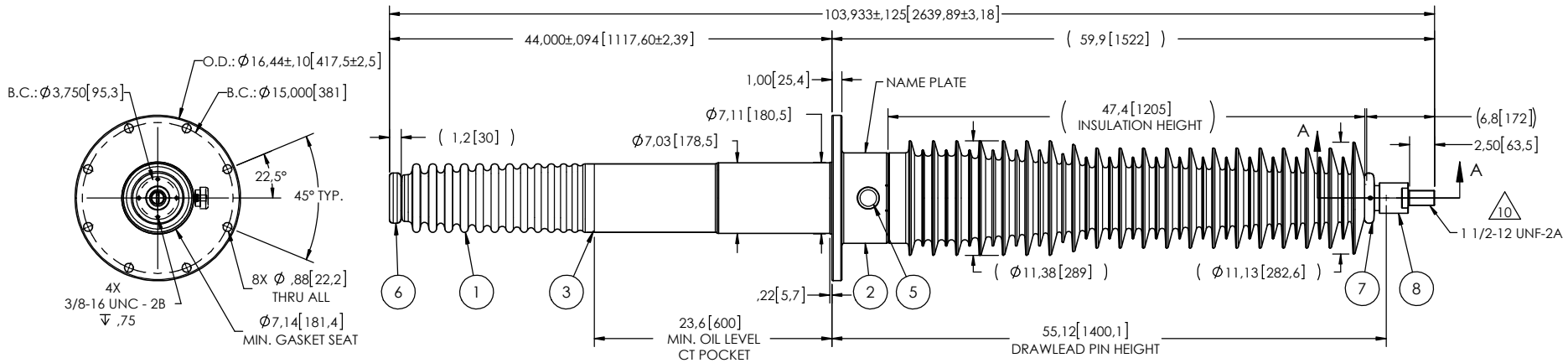


- NOTES:
- 1 CREEPAGE DISTANCE: 148.5" / 3772 mm
  - 2 ARC DISTANCE: 50.7" / 1288 mm
  - 3 NOMINAL VOLTAGE: 123kV
  - 4 NOMINAL CURRENT: 600A
  - 5 VOLTAGE WITHSTAND, 60 sec.: 280kV
  - 6 B.I.L.: 550kV
  - 7 ROUTINE TEST ACCORDING TO: CSA C88.1-96
  - 8 MAX. TORQUE APPLIED ON FLANGE BOLTS: 70 lbf x ft / 94.9 N.m
  - 9 WEIGHT: 303 lbs / 137.4 Kg
- △ SILVER PLATED, AS PER ASTM B700, TYPE 1, GRADE D, CLASS N, NO NICKEL LAYER, FROM 13 TO 20 MICROMETERS THICKNESS

REVISIONS					
ZONE	REV.	DESCRIPTION	DRAWN BY	DATE	APPR.



ITEM NO.	QTY	DRAWING NO.	PART NO.	DESCRIPTION	NOTE / MATL
8	1	S-5350-9640-1		THREADED TERMINAL KIT	COPPER
7	1	S-7192-6849		CORONA RING TOP	ALUMINUM
6	1	S-5350-9638		CORONA RING BOTTOM	ALUMINUM
5	1	S-2878-2606		CAPACITANCE TAP ASSEMBLY	ALUMINUM
4	1	S-1001-9357		TUBE ASSEMBLY	ALUMINUM
3	1	S-1001-9356		SHIELD ASSEMBLY	BRASS
2	1	S-5350-9637		FLANGE	ALUMINUM
1	1	S-5350-9636	-001	CASTING, CYCLOALIPHATIC RESIN	EC-APG-02

GENERAL TOLERANCES (UNLESS OTHERWISE SPECIFIED)

X.	±0.125
.X	±0.094
.XX	±0.063
.XXX	±0.031
ANGLES	±0.25°
RADIUS	±0.031

REMOVE BURRS AND BREAK SHARP EDGES

DIMENSIONS ARE IN INCHES (UNLESS OTHERWISE SPECIFIED)

**Electro Composites™**  
**solid HV bushings solution**

TITLE: SDC® BUSHING 123kV, 600A  
MODEL: 550-006-T-633-10

DRAWN BY: A.SAVARD	DATE: 2018/03/14	FORMAT: A	CAGE CODE	DRAWING NO.: S-5350-9636	REVISION: NR
PROJECT NO.:	PROJECT MANAGER:	SCALE: 1:16	GENERATED BY: SolidWorks 2013	SHEET: 1 of 1	

This drawing is the proprietary property of Electro Composites (2008) ULC, not part of the public domain, and is issued with the express understanding and agreement that it is not to be reproduced or copied in whole or in part or issued for furnishing information to others, or used directly or indirectly, in any way detrimental to the interest of Electro Composites (2008) ULC and is to be returned upon request by Electro Composites (2008) ULC. All Rights Reserved.