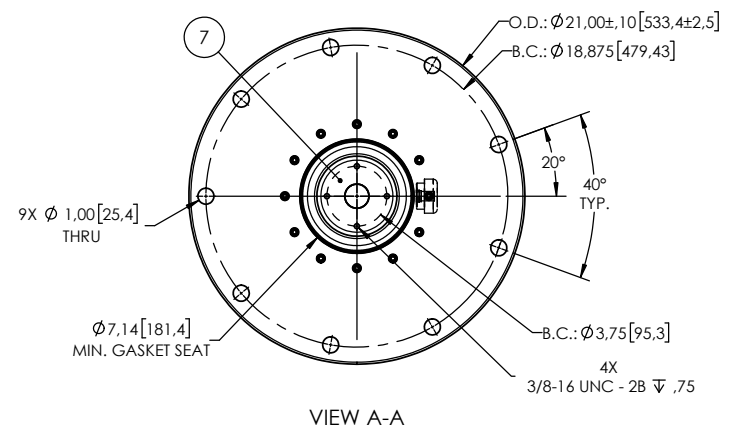
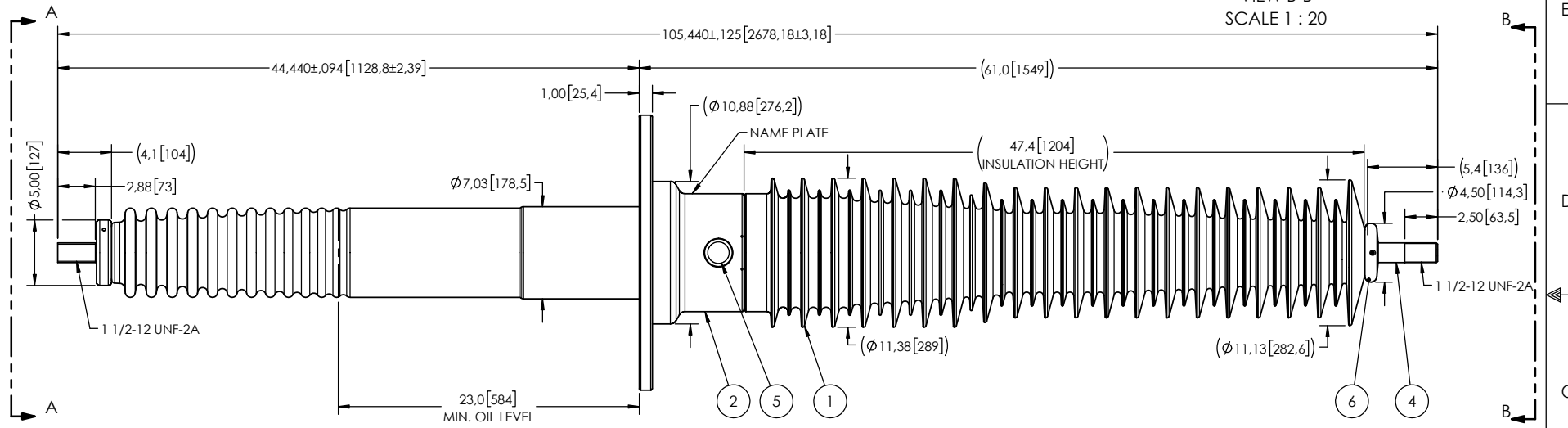
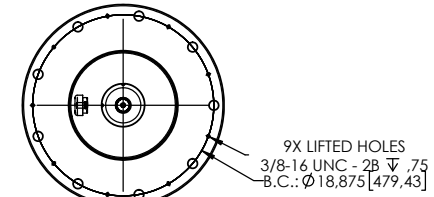


- NOTES:
- 1 CREEPAGE DISTANCE OUTSIDE: 148.5" / 3772mm
 - 2 ARC DISTANCE: 50.7" / 1288mm
 - 3 NOMINAL VOLTAGE: 115kV
 - 4 NOMINAL CURRENT: 1200A
 - 5 VOLTAGE WITHSTAND, 60 sec.: 260kV
 - 6 B.I.L. : 550kV
 - 7 ROUTINE TEST ACCORDING TO: IEEE C57.19.01
 - 8 MAX. TORQUE APPLIED ON FLANGE BOLTS: 70 lbf x ft / 94.9 N.m
 - 9 WEIGHT: 372 lb / 168.7 kg

REVISIONS					
ZONE	REV.	DESCRIPTION	DRAWN BY	DATE	APPR.
	A	THE DESIGN OF FLANGE HAS BEEN CHANGED	A.SAVARD	2020-09-18	J.V.



This drawing is the proprietary property of Electro Composites (2008) ULC, not part of the public domain, and is issued with the express understanding and agreement that it is not to be reproduced or copied in whole or in part or issued for furnishing information to others, or used directly or indirectly, in any way detrimental to the interest of Electro Composites (2008) ULC and is to be returned upon request by Electro Composites (2008) ULC. All Rights Reserved.

ITEM NO.	QTY	DRAWING NO.	PART NO.	DESCRIPTION	NOTE / MAT'L
7	1	S-3876-8840		CORONA RING BOTTOM	ALUMINUM
6	1	S-2878-4854		CORONA RING TOP	ALUMINUM
5	1	S-2878-2606	S-2878-2606	CAPACITANCE TAP ASSEMBLY	ALUMINUM
4	1	S-3960-10187		ROD ASSEMBLY	COPPER
3	1	S-7447-8650		SHIELD ASSEMBLY	BRASS
2	1	S-3960-10186		FLANGE	ALUMINUM
1	1	S-3960-10185	-001	CASTING, CYCLOALIPHATIC RESIN	EC-APG-02

PARTS LIST					
GENERAL TOLERANCES (UNLESS OTHERWISE SPECIFIED)		DRAWN BY: A.SAVARD		DATE: 2020/08/14	
X.	±0.125	<div style="text-align: center;"> ElectroComposites™ solid HV bushings solution </div> TITLE: SDC® BUSHING 115kV, 1200A MODEL: 550-012-T-633-11			
.X	±0.094				
.XX	±0.063				
.XXX	±0.010				
ANGLES	±0.25°				
RADIUS	±0.031	REMOVE BURRS AND BREAK SHARP EDGES	PROJECT NO.:	SCALE: 1:12	GENERATED BY: SolidWorks 2020
DIMENSIONS ARE IN INCHES (UNLESS OTHERWISE SPECIFIED)		PROJECT MANAGER:	REVISION: A	SHEET: 1 of 1	