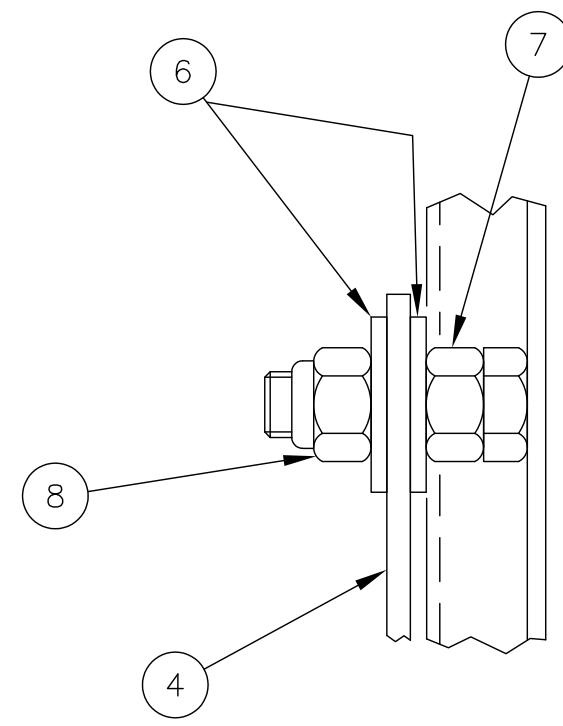
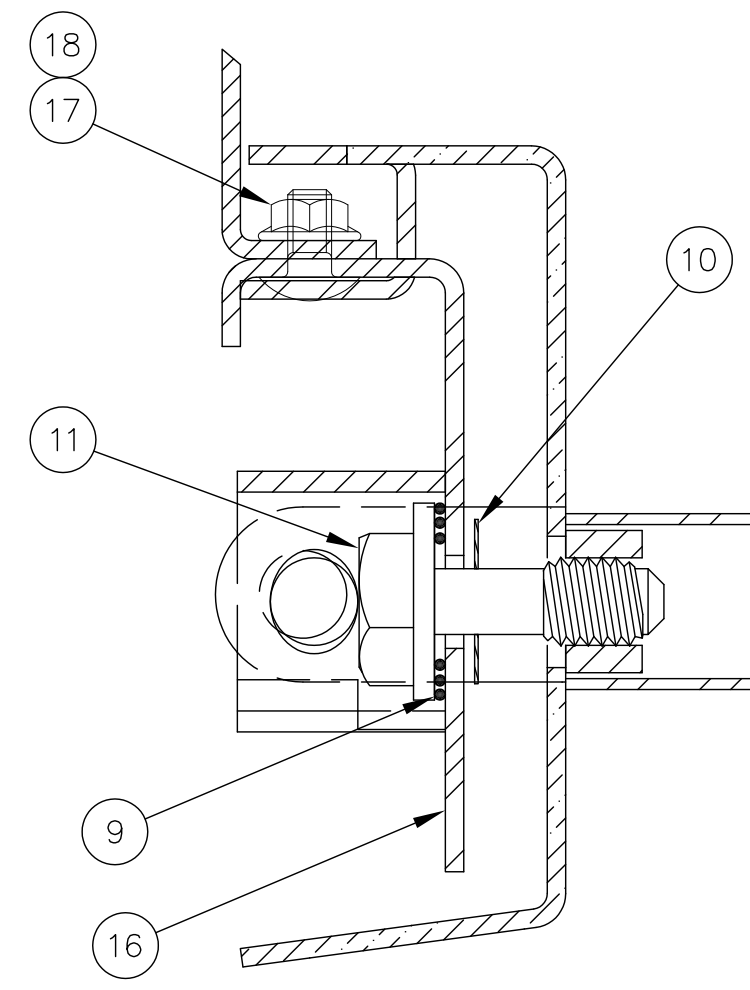


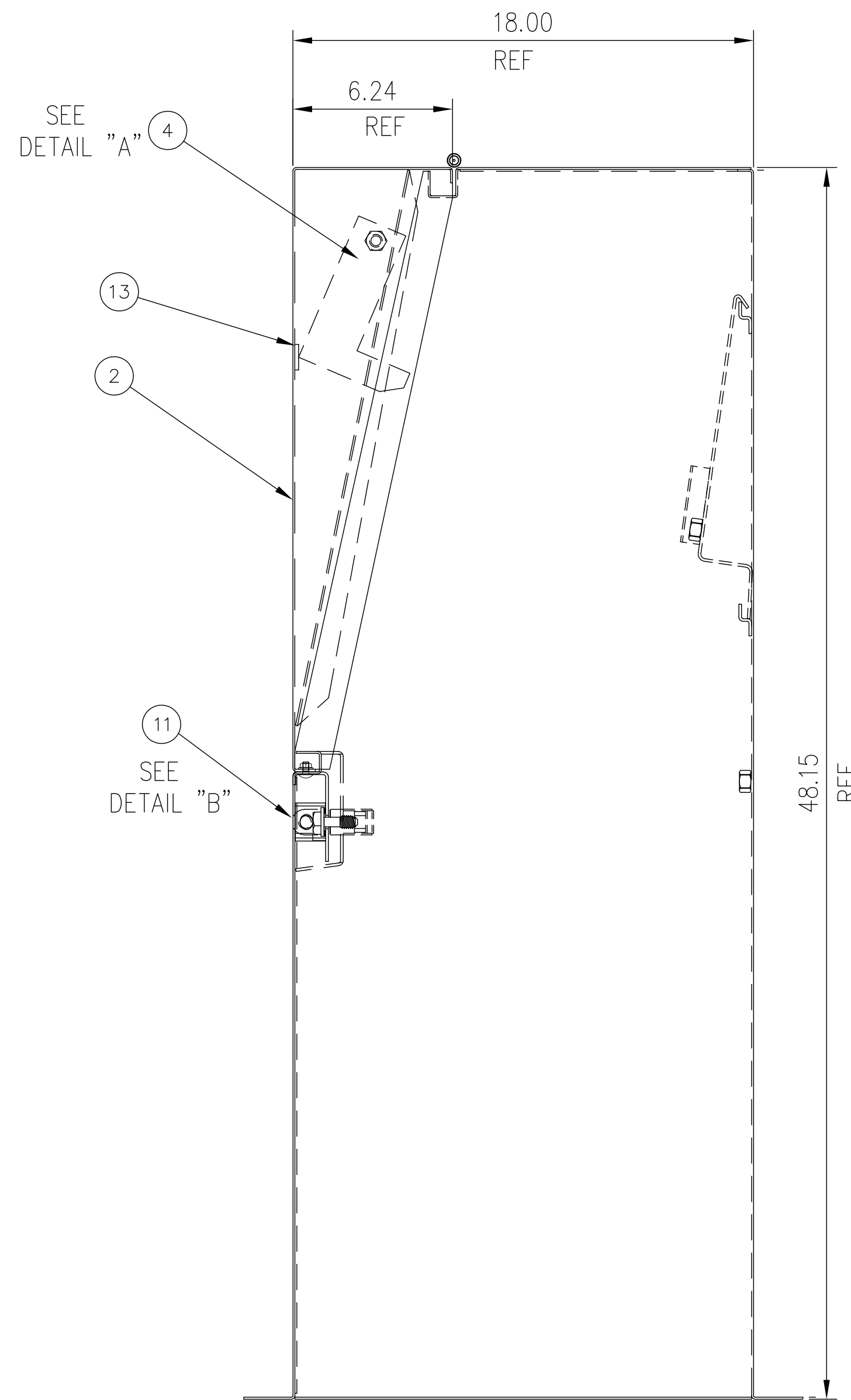
FRONT VIEW  
COVER REMOVED



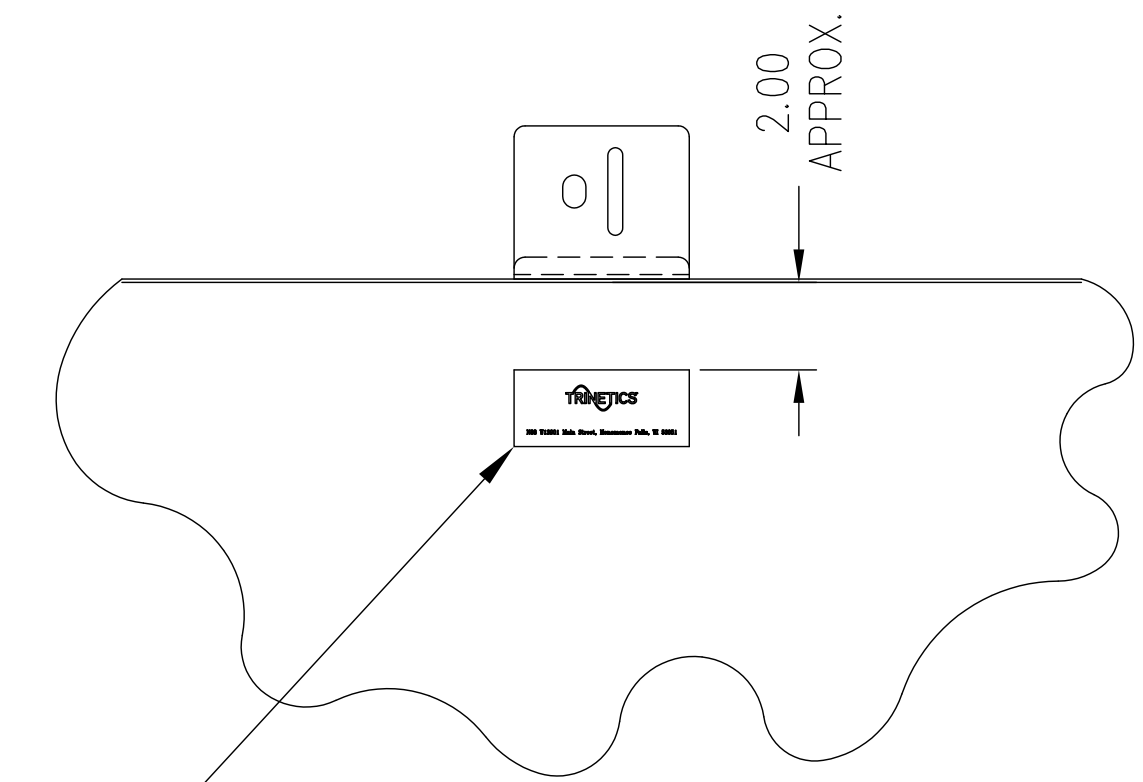
DETAIL "A"



DETAIL "B"



ITEM#	QTY	PART#	DESCRIPTION	MATERIAL
1	1	D-63335004	BODY WELD'T	#14GA HRPO
2	1	C-63334804	COVER WELD'T	#14GA HRPO
3	1	B-63223202	MOUNTING BAR	#12GA HRPO
4	1	B-633245	WIND STOP	#10GA HRPO
5				
6	2	92601005	3/8 FLAT WASHER	STN STL
7	1	92290604	3/8-16 HEX NUT	AL SIL BRNZ
8	1	92291206	3/8-16 NYLOCK NUT	STN STL
9	1	A-612079	1/2 SPRING	STN STL
10	1	A-612048	PALNUT ONE-WAY WASHER	STN STL
11	1	A-61216202	PENTA BOLT	STN STL
12	1	A-617204	DECAL - MAYSTEEL	
13	1	A-61208402	NEOPRENE GASKET	
14				
15	SEE B7	A-617055	MUNSELL GREEN POWDER	PAINT
16	1	B-73189606	HANDLE WELDM'T	#12GA HRPO
17	2	9205A108	CARRIAGE BOLT 1/4-20	STN STL
18	2	92251706WX	WHIZ LOCK NUT 1/4-20	STN STL



12 CENTERED ON COVER AND READABLE WITH COVER IN OPEN POSITION

VIEW OF INSIDE OF  
COVER IN OPEN  
POSITION



THIS IS A CAD DRAWING. DO NOT MAKE MANUAL CHANGES!

REV	ERN	BY	DATE
2	63331	WK	04/12/99
1	3092	BL	04/01/92
NR	2310	LK	12/20/88

TOL. UNLESS NOTED X ±.06 XX ±.03 XXX ±.015 ANGLES ±1° PLATES ±.005	THIRD ANGLE PROJECTION	THIS DRAWING AND ALL INFORMATION THEREON IS THE SOLE PROPERTY OF TRINETICS. IT MUST NOT BE COPIED, REPRODUCED OR SUBMITTED TO OTHERS WITHOUT WRITTEN AUTHORIZATION. ALL REPRODUCTIONS ARE SUBJECT TO RETURN ON DEMAND.	
NEXT ASSEMBLY		#14 GA. (.0747) HRPO CW218-18TH TH - FINAL ASSEMBLY	
SIMILAR TO		DRAWN BY: LK DATE: 12/20/88	
WEIGHT: SCALE: 17/64		CURRENT ERN: 63331	REV: 002
SIZE FAMILY ID: P100 SHEET: 1 OF 1		PART NUMBER: 63335104	

