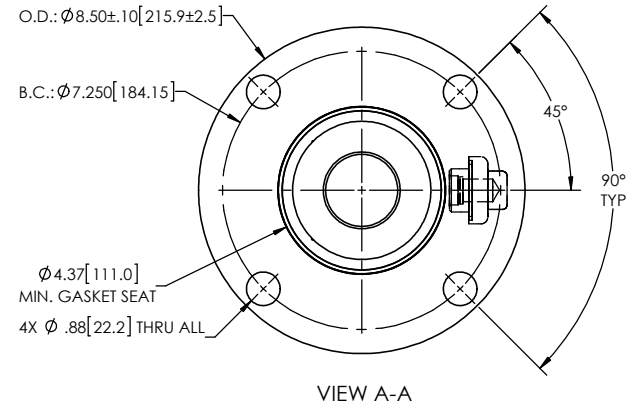
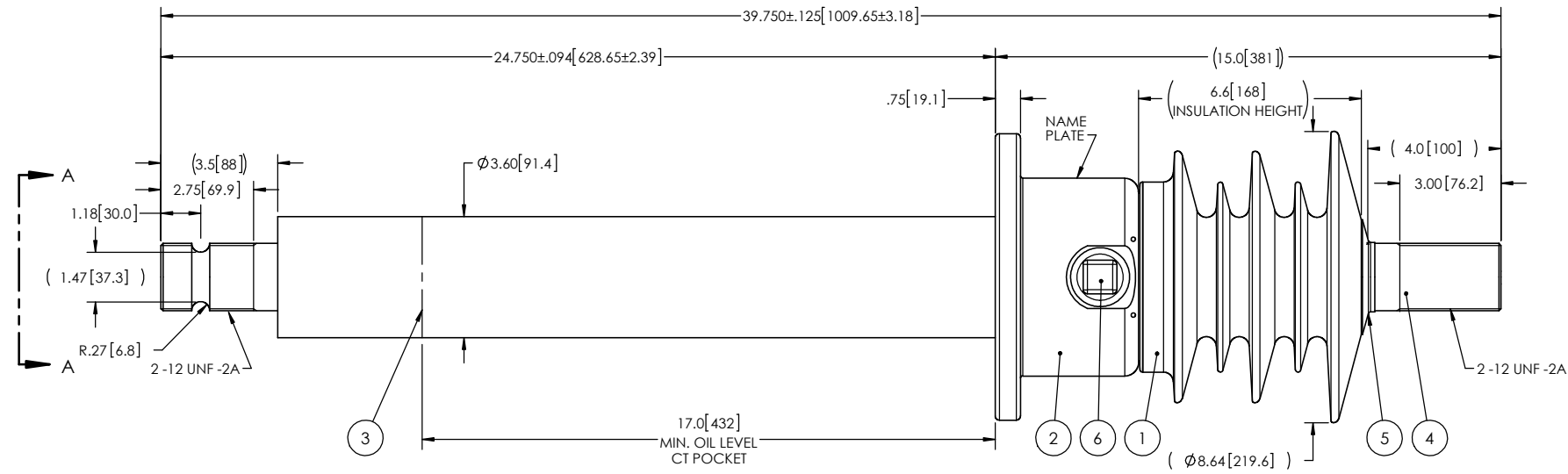


- NOTES:
- 1 CREEPAGE DISTANCE: 19.7" / 497mm
 - 2 ARC DISTANCE: 9.3" / 235mm
 - 3 NOMINAL VOLTAGE: 15 kV
 - 4 NOMINAL CURRENT: 2000A
 - 5 VOLTAGE WITHSTAND, 60 sec.: 50kV
 - 6 BIL : 110kV
 - 7 APPLICATION STANDARD: CSA C88.1 -2018
 - 8 MAX. TORQUE APPLIED ON FLANGE BOLTS: 40 lbf·ft / 54.2 N·m
 - 9 WEIGHT: 69 lb / 31.3 kg

REVISIONS					
ZONE	REV.	DESCRIPTION	DRAWN BY	DATE	APPR.



This drawing is the proprietary property of Electro Composites (2008) ULC, not part of the public domain, and is issued with the express understanding and agreement that it is not to be reproduced or copied in whole or in part or issued for furnishing information to others, or used directly or indirectly, in any way detrimental to the interest of Electro Composites (2008) ULC and is to be returned upon request by Electro Composites (2008) ULC. All Rights Reserved.

ITEM NO.	QTY	DRAWING NO.	PART NO.	DESCRIPTION	NOTE / MAT'L
6	1	S-1001-2022		CAPACITANCE TAP ASSEMBLY	ALUMINUM
5	1	S-1344-0162-0		CAP	COPPER
4	1	S-7489-9953		ROD ASSEMBLY	COPPER
3	1	S-7489-9954		SHIELD ASSEMBLY	COPPER
2	1	S-6303-5953		FLANGE	ALUMINUM
1	1	S-7489-9909	-001	CASTING, CYCLOALIPHATIC RESIN	EC-APG-02

PARTS LIST					
GENERAL TOLERANCES (UNLESS OTHERWISE SPECIFIED)		REPLACE:		Electro Composites™ solid HV bushings solution	
X.	±0.125				
.X	±0.094			TITLE: SDC® BUSHING 15kV 2000A	
.XX	±0.063			MODEL: 110-020-B-638-04	
.XXX	±0.031			FORMAT: A	CAGE CODE: S-7489-9909
ANGLES	±0.25°			DRAWING NO.:	REVISION: NR
RADIUS	±0.031			SCALE: 1:5	GENERATED BY: SolidWorks 2012
REMOVE BURRS AND BREAK SHARP EDGES		DIMENSIONS ARE IN INCHES (UNLESS OTHERWISE SPECIFIED)		SHEET: 1 of 1	