



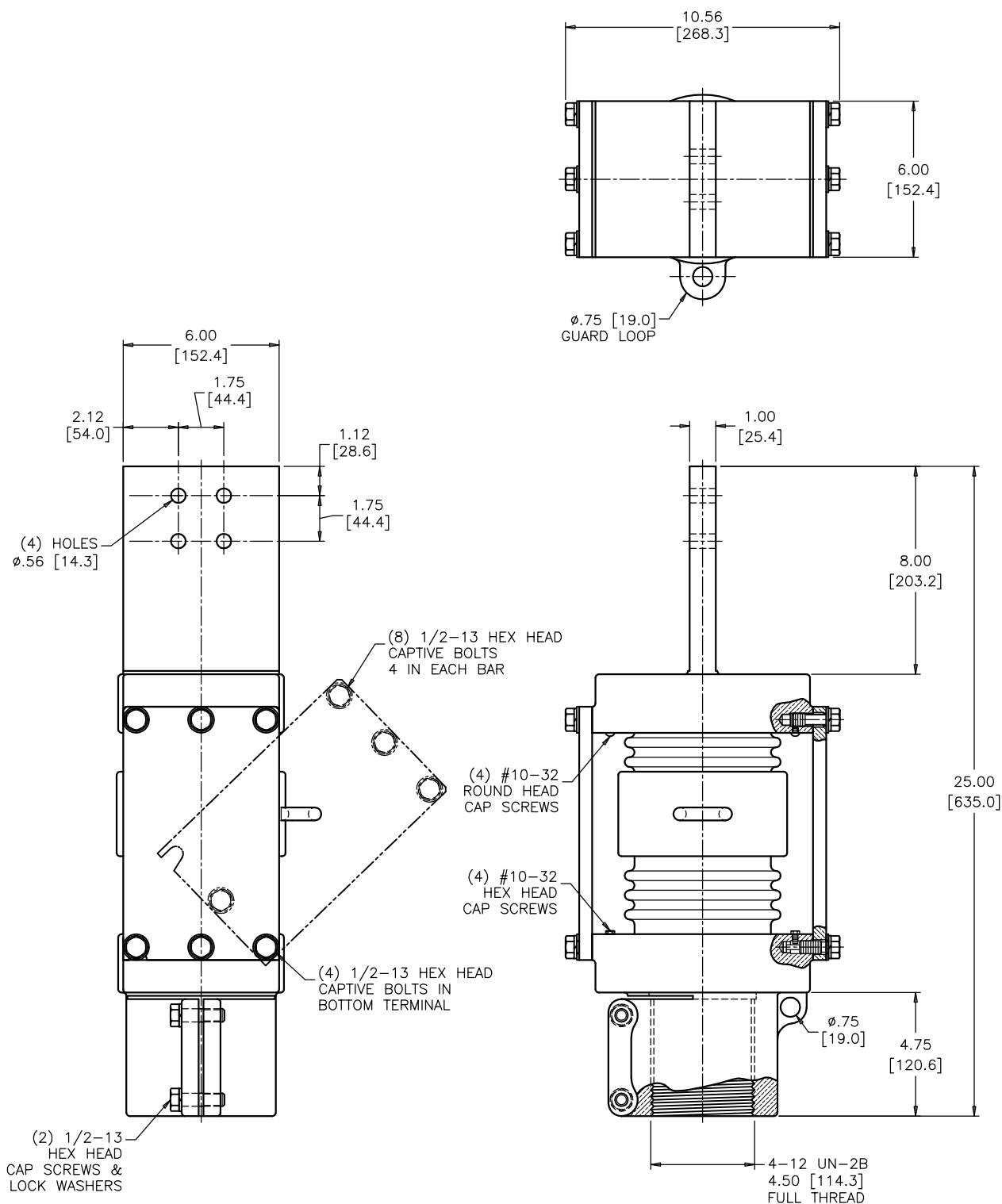
PCORE
ELECTRIC

POWER SYSTEMS

DATE	9-1-04	REV. DATE	1-9-12
REF.			

TITLE	TEST TERMINAL
TOP TERMINAL	4 HOLE NEMA PAD @ 1.75 [44.4] SPACING
BOTTOM TERMINAL	4-12 THREAD FEMALE

DWG.	CATALOG NUMBER	GLAZE COLOR
SD	B-64008-41	BROWN
SD	B-64008-41-70	LT. GRAY
CURRENT RATING		4000 A



BOLTS ARE EVERDUR AND STAINLESS STEEL
HARDWARE IS HIGH CONDUCTIVITY COPPER - SILVER PLATED

DIMENSIONS IN INCHES [MILLIMETERS]

REVISION REDRAWN TO SCALE & TO NEW STANDARDS, REMOVED KEEPERS, ADDED (4) #10-32 ROUND HEAD CAP SCREWS ON TOP TERMINAL

SCALE 1/4

NOTE TO PURCHASER:
ALL SALES OF PCORE PRODUCTS ARE SUBJECT
TO OUR STANDARD TERMS AND CONDITIONS
AND THE LIMITED WARRANTIES THEREUNDER