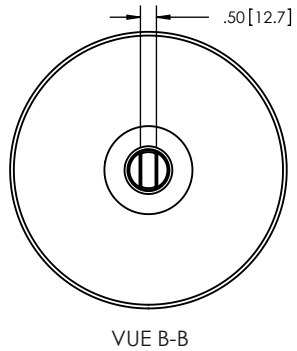
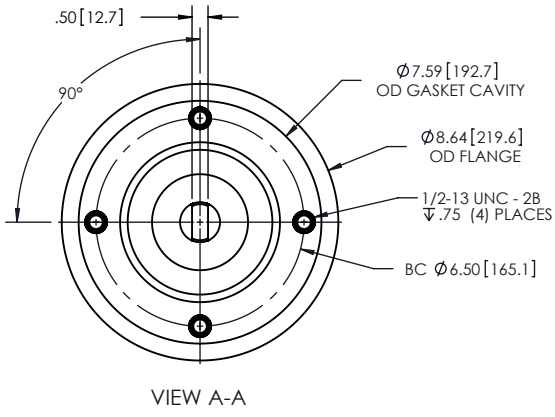
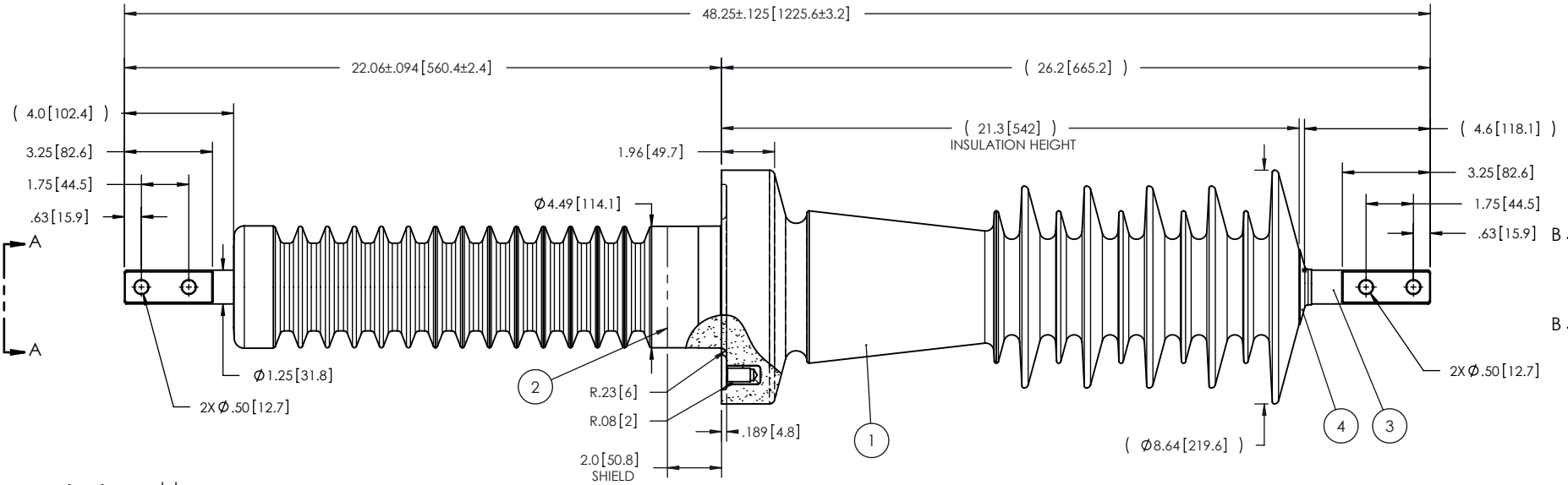


- NOTES:
- 1 CREEPAGE DISTANCE OUT SIDE: 47.6" / 1209mm
 - 2 CREEPAGE DISTANCE IN SIDE: 28.4" / 722mm
 - 3 ARC DISTANCE OUT SIDE: 23.8" / 598mm
 - 4 ARC DISTANCE IN SIDE: 17.5" / 445mm
 - 5 NOMINAL VOLTAGE: 34.5kV
 - 6 NOMINAL CURRENT: 400A
 - 7 WITHSTAND VOLTAGE AT 60 sec.: 80kV
 - 8 B.I.L.: 200kV
 - 9 ROUTINE TEST ACCORDING TO: IEEE C57.19.01
 - 10 MAX. TORQUE APPLIED ON FLANGE BOLTS 30 lbf x ft
 - 11 WEIGHT: 61lbs/27.6kg

REVISIONS					
ZONE	REV.	DESCRIPTION	DRAWN BY	DATE	APPR.



ITEM NO.	QTY	DRAWING NO.	PART NO.	DESCRIPTION	NOTE / MAT'L
4	1	S-1016-0008		CAP	COPPER
3	1	S-6917-6649		ROD ASSEMBLY	COPPER
2	1	S-6917-6648		SHIELD ASSEMBLY	COPPER
1	1	S-6917-6647	-001	CASTING, CYCLOALIPHATIC RESIN	EC-APG-01

ElectroComposites™
solid HV bushings solution

TITLE:
BUSHING 34.5kV, 400A
MODEL: 200-004-W-642-00

REPLACE:	DATE: 2011/06/22	FORMAT: A	CAGE CODE:	DRAWING NO.: S-6917-6647	REVISION: NR
CHECK BY:	PROJECT ENG.:	SCALE: 1:6	GENERATED BY: SolidWorks 2009	SHEET 1 of 1	

GENERAL TOLERANCES (UNLESS OTHERWISE SPECIFIED):
 X. ±0.125
 .X ±0.094
 .XX ±0.063
 .XXX ±0.010
 ANGLES ±0.1°
 RADIUS ±0.031

REMOVE BURRS AND BREAK SHARP EDGES
 DIMENSIONS ARE IN INCHES (UNLESS OTHERWISE SPECIFIED)

This drawing is the proprietary property of Electro Composites (2008) ULC, not part of the public domain, and is issued with the express understanding and agreement that it is not to be reproduced or copied in whole or in part or issued for furnishing information to others, or used directly or indirectly, in any way detrimental to the interest of Electro Composites (2008) ULC and is to be returned upon request by Electro Composites (2008) ULC. All Rights Reserved.