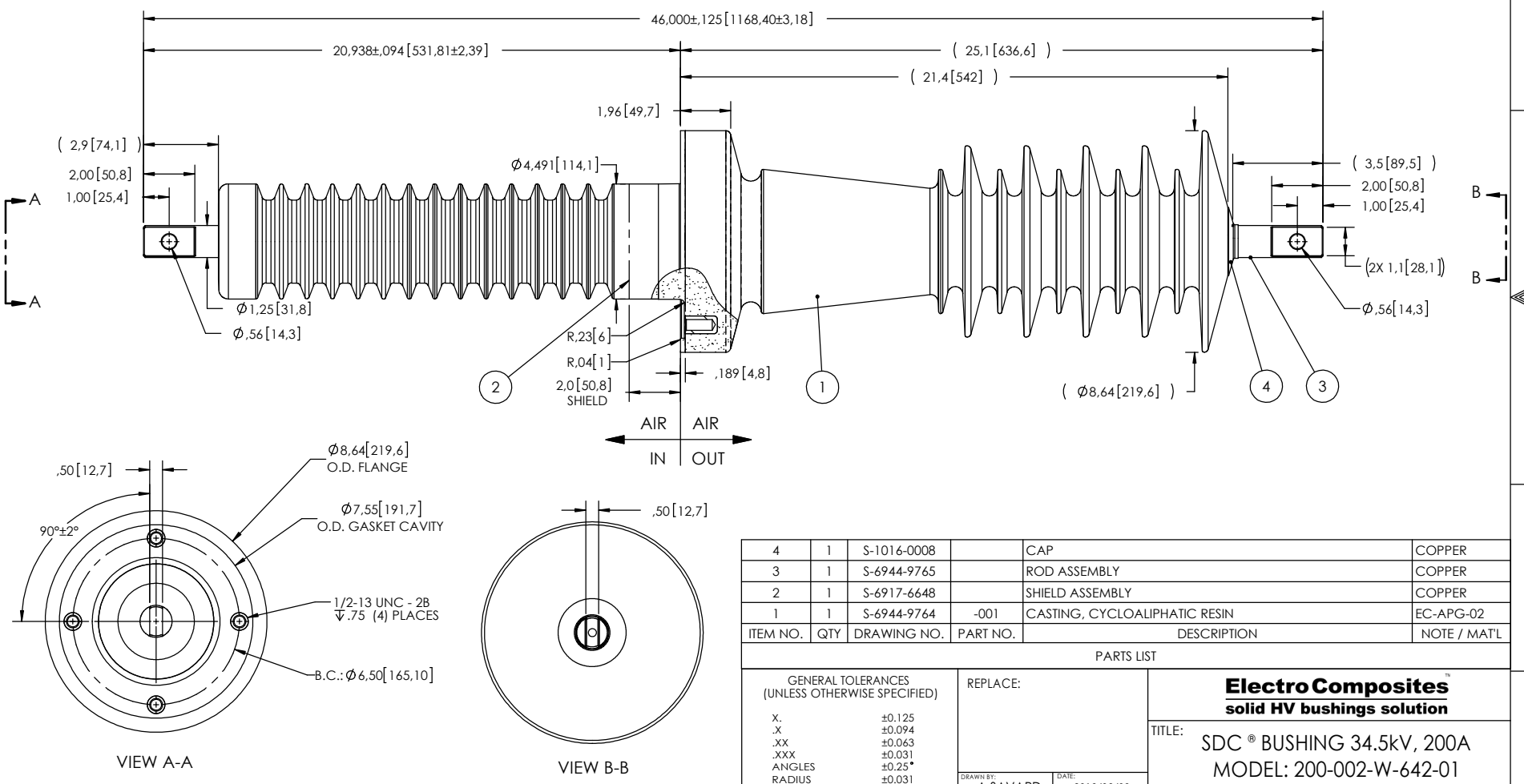


NOTES:

- 1 CREEPAGE DISTANCE OUT SIDE: 47.6" / 1209mm
- 2 CREEPAGE DISTANCE IN SIDE: 28.4" / 722mm
- 3 ARC DISTANCE OUT SIDE: 23.8" / 598mm
- 4 ARC DISTANCE IN SIDE: 17.5" / 445mm
- 5 NOMINAL VOLTAGE: 34.5kV
- 6 NOMINAL CURRENT: 200A
- 7 VOLTAGE WITHSTAND, 60 sec.: 80kV
- 8 B.I.L.: 200kV
- 9 ROUTINE TEST ACCORDING TO: IEEE C57.19.01
- 10 MAX. TORQUE APPLIED ON FLANGE BOLTS 30 lbf x ft
- 11 WEIGHT: 61 lb / 27.7 kg

REVISIONS					
ZONE	REV.	DESCRIPTION	DRAWN BY	DATE	APPR.



ITEM NO.	QTY	DRAWING NO.	PART NO.	DESCRIPTION	NOTE / MAT'L
4	1	S-1016-0008		CAP	COPPER
3	1	S-6944-9765		ROD ASSEMBLY	COPPER
2	1	S-6917-6648		SHIELD ASSEMBLY	COPPER
1	1	S-6944-9764	-001	CASTING, CYCLOALIPHATIC RESIN	EC-APG-02

PARTS LIST					
GENERAL TOLERANCES (UNLESS OTHERWISE SPECIFIED)		REPLACE:		<b>ElectroComposites™</b> <b>solid HV bushings solution</b>	
X.	±0.125	DRAWN BY: A.SAVARD DATE: 2018/08/09			
.X	±0.094	CHECK BY:		<b>TITLE:</b> <b>SDC® BUSHING 34.5kV, 200A</b> <b>MODEL: 200-002-W-642-01</b>	
.XX	±0.063	PROJECT ENG.:			
.XXX	±0.031	PROJECT MANAGER:		FORMAT: A	CAGE CODE: S-6944-9764
ANGLES	±0.25°	SCALE: 1:6		DRAWING NO.:	REVISION: NR
RADIUS	±0.031	DIMENSIONS ARE IN INCHES (UNLESS OTHERWISE SPECIFIED)		GENERATED BY: SolidWorks 2013	SHEET: 1 of 1

This drawing is the proprietary property of Electro Composites (2008) ULC, not part of the public domain, and is issued with the express understanding and agreement that it is not to be reproduced or copied in whole or in part or issued for furnishing information to others, or used directly or indirectly, in any way detrimental to the interest of Electro Composites (2008) ULC and is to be returned upon request by Electro Composites (2008) ULC. All Rights Reserved.