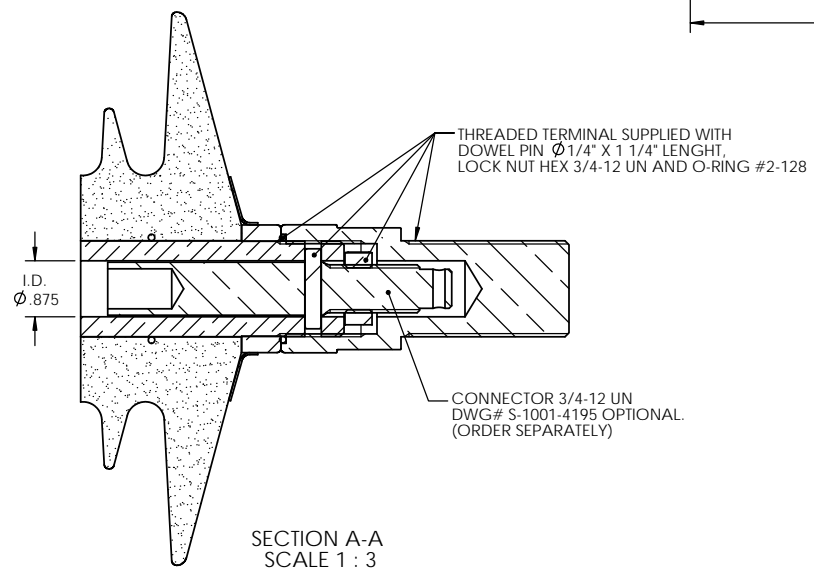
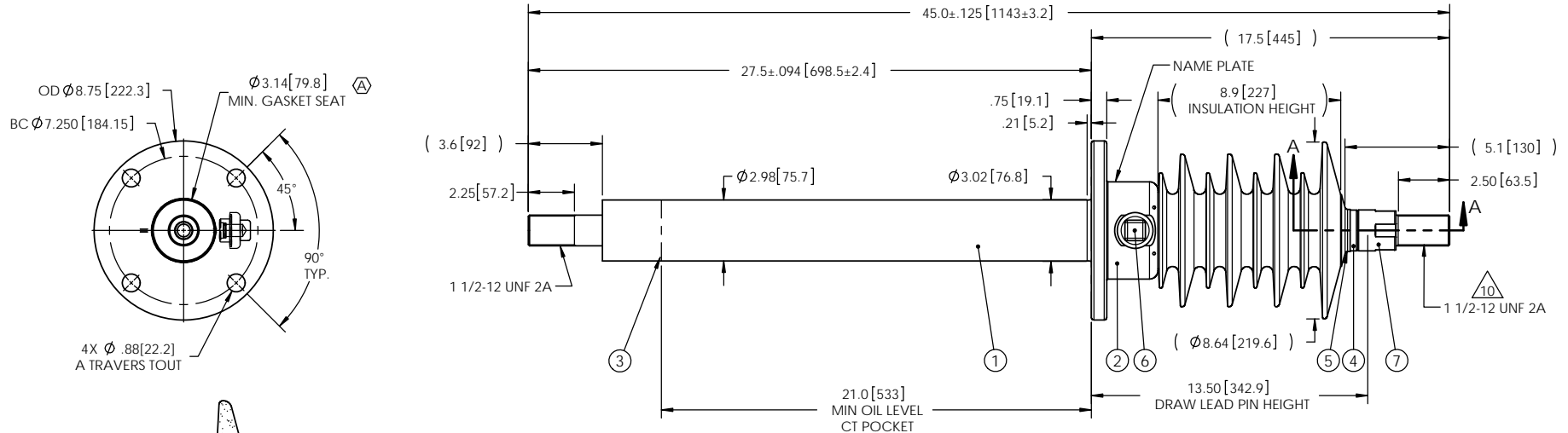


- NOTES:
- 1 CREEPAGE DISTANCE: 28.9" / 734mm
  - 2 ARC DISTANCE: 11.8" / 301mm
  - 3 NOMINAL VOLTAGE: 15kV
  - 4 NOMINAL CURRENT: 400/1200A
  - 5 VOLTAGE WITHSTAND, 60 sec.: 50kV
  - 6 BIL : 110kV
  - 7 ROUTINE TEST ACCORDING TO: IEEE C57.19.01
  - 8 MAX. TORQUE APPLIED ON FLANGE BOLTS: 40 lbf · ft / 54.2 N · m
  - 9 WEIGHT: 46 lb / 20.9 Kg
  - 10 SILVER PLATED, AS PER ASTM B700, TYPE 1, GRADE D, CLASS N, NO NICKEL LAYER, FROM 13 TO 20 MICROMETERS THICKNESS

REVISIONS					
ZONE	REV.	DESCRIPTION	DRAWN BY	DATE	APPR.
A2	E5	UPDATE OF THE DRAWING + THE TITLE CHANGE (ADD SDC BUSHING) ADD THE MIN. GASKET SEAT DIMENSION	J. CLICHE	2014-01-31	J.V.



ITEM NO.	QTY	DRAWING NO.	PART NO.	DESCRIPTION	NOTE / MAT'L
7	1	S-5595-5338-1		THREADED TERMINAL KIT	COPPER
6	1	S-1001-2022		CAPACITANCE TAP ASSEMBLY	ALUMINUM
5	1	S-1344-0162		CAP	COPPER
4	1	S-7187-6775		TUBE ASSEMBLY	COPPER
3	1	S-7187-6774		SHIELD ASSEMBLY	COPPER
2	1	S-6899-6531		FLANGE	ALUMINUM
1	1	S-7187-6773		CASTING, CYCLOALIPHATIC RESIN	EC-APG-02

**PARTS LIST**

GENERAL TOLERANCES (UNLESS OTHERWISE SPECIFIED)				<b>TITLE:</b> SDC® BUSHING 15kV, 400/1200A MODEL: 110-412-T-657-00	
X.	±0.125				
.X	±0.094	CHECK BY:		FORMAT: A	CAGE CODE:
.XX	±0.063	PROJECT ENG:		DRAWING NO.: S-7187-6773	REVISION: A
.XXX	±0.031	PROJECT MGR:		SCALE: 1:8	GENERATED BY: SolidWorks 2013
ANGLES	±0.25°				SHEET: 1 of 1
RADIUS	±0.031				

REMOVE BURRS AND BREAK SHARP EDGES

DIMENSIONS ARE IN INCHES (UNLESS OTHERWISE SPECIFIED)

This drawing is the proprietary property of Electro Composites (2008) ULC, not part of the public domain, and is issued with the express understanding and agreement that it is not to be reproduced or copied in whole or in part or issued for furnishing information to others, or used directly or indirectly, in any way detrimental to the interest of Electro Composites (2008) ULC and is to be returned upon request by Electro Composites (2008) ULC. All Rights Reserved.