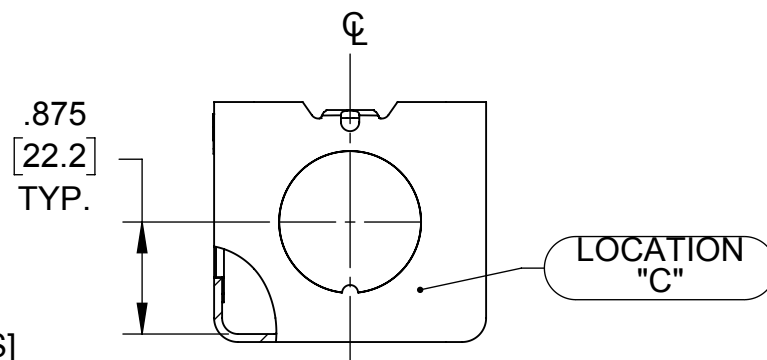
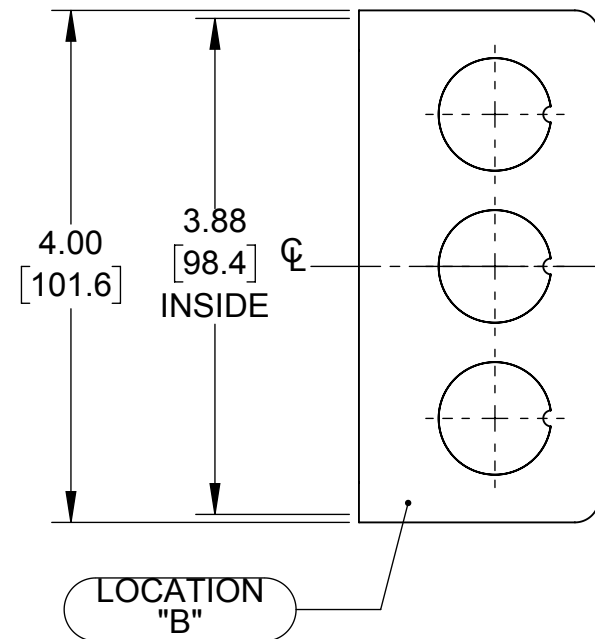
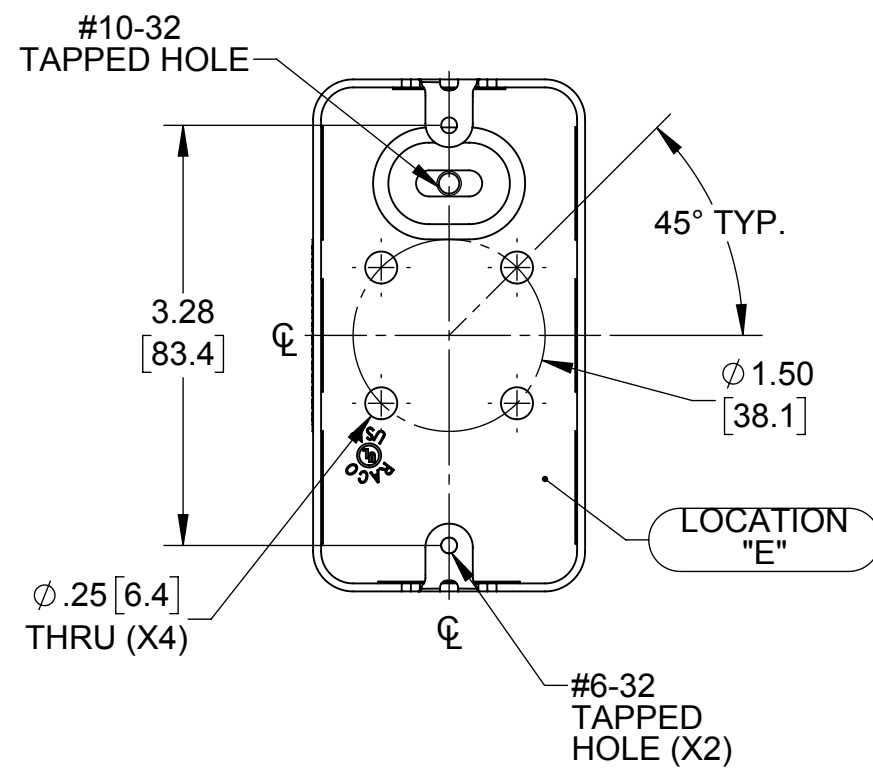
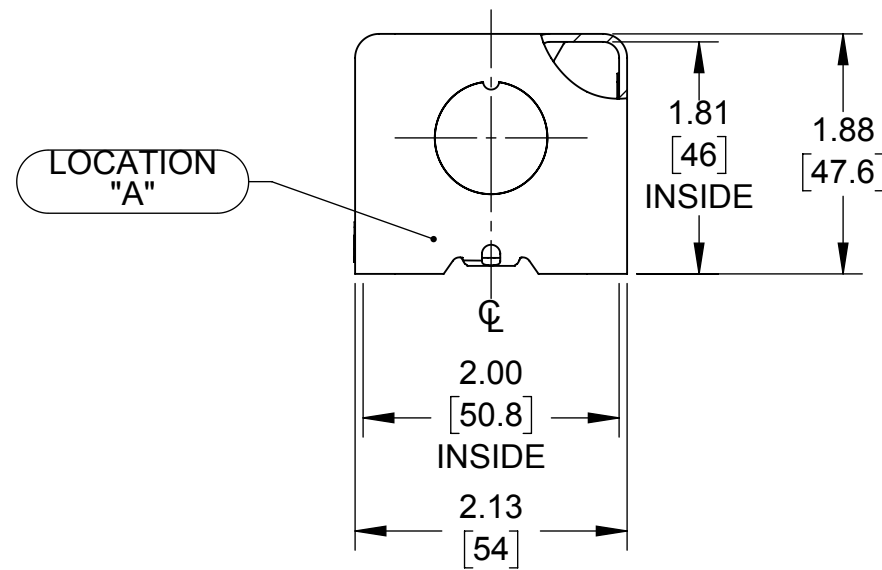
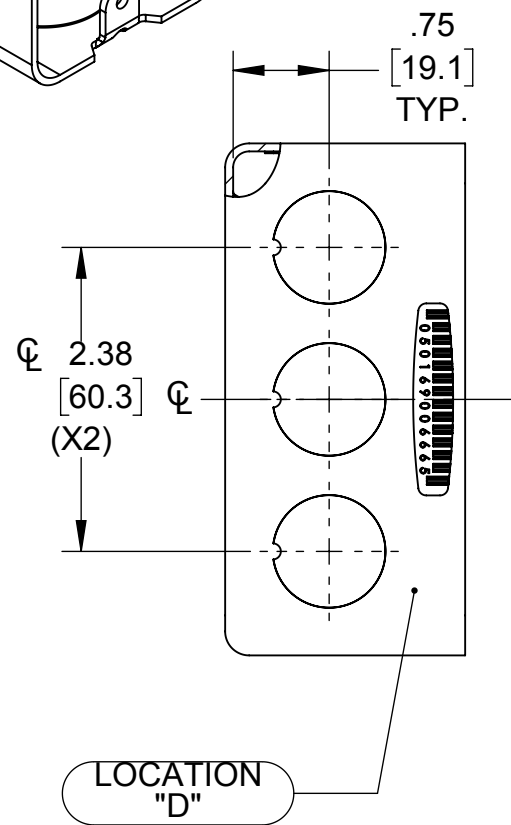
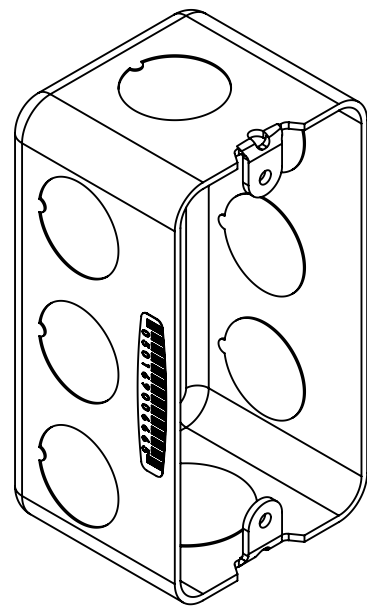


**LIST OF PARTS**

| DESCRIPTION | MATERIAL | FINISH     |
|-------------|----------|------------|
| HANDY BOX   | STEEL    | GALVANIZED |
|             |          |            |
|             |          |            |
|             |          |            |
|             |          |            |
|             |          |            |



- NOTES:**
1. ALL DIMENSIONS ARE IN INCHES AND [MILLIMETERS]
  2. BOX VOLUME: 16.5 IN<sup>3</sup> [270.4 CM<sup>3</sup>]
  3. UL LISTED

| KNOCKOUTS  |          |      |
|------------|----------|------|
| TRADE SIZE | LOCATION | QTY. |
| 1/2" KO    | B,D      | 3    |
| 1/2" KO    | A,C      | 1    |

TOLERANCE UNLESS OTHERWISE SPECIFIED  
 .XX DECIMAL ±.015  
 .XXX DECIMAL ±.005  
 ANGLE ±2°

**RACO**  
 South Bend, Indiana

|           |          |        |     |
|-----------|----------|--------|-----|
| DRAWN BY: | RMV      | SCALE: | 2:3 |
| APP. BY:  | N.S.     |        |     |
| DATE:     | 02-14-17 |        |     |

| SYMBOL | REVISION DESCRIPTION | APP  | DATE     |
|--------|----------------------|------|----------|
|        | INITIAL RELEASE      | N.S. | 02-14-17 |

THE DESIGN AND DIMENSIONS OF THE PRODUCT SHOWN ON THIS DRAWING ARE SUBJECT TO CHANGE WITHOUT NOTICE

TITLE:  
**4" X 2" HANDY BOX (DRAWN) 1-7/8" DEEP**