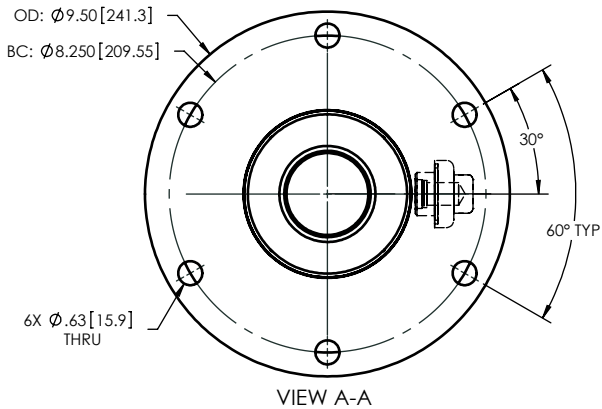
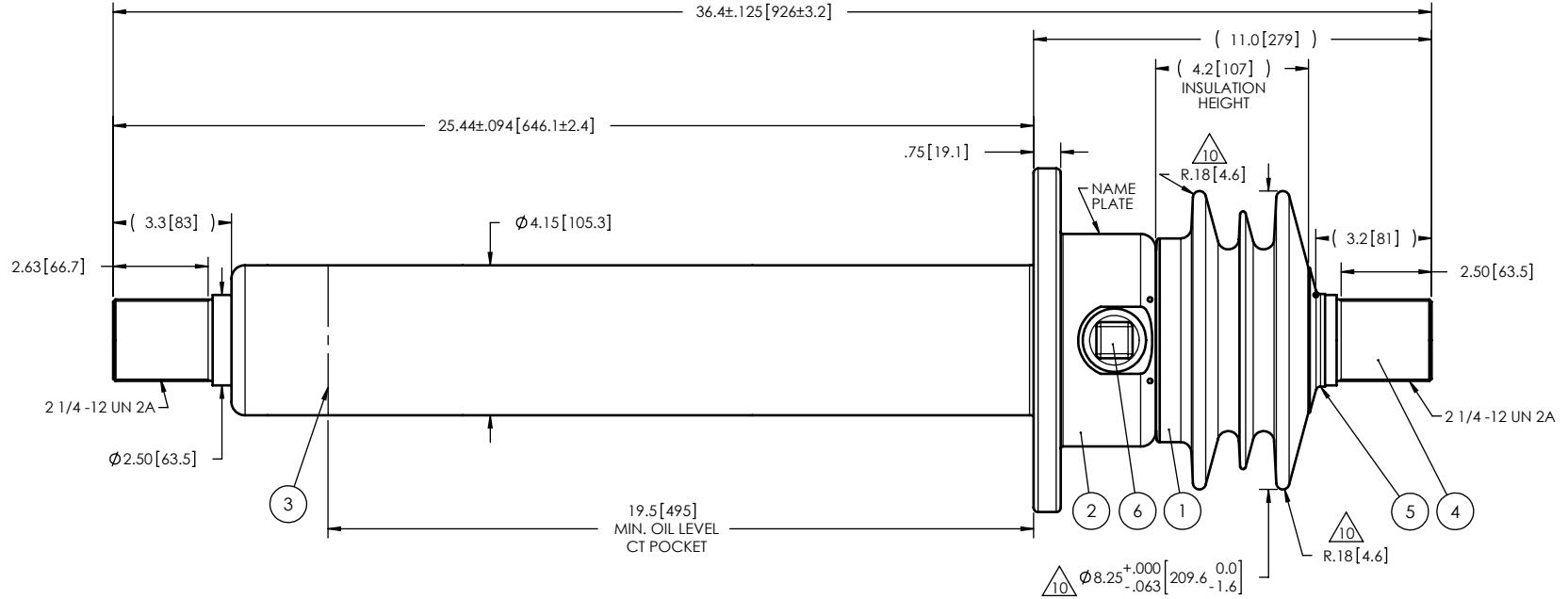


NOTES:

- 1 CREEPAGE DISTANCE: 11.1" / 282mm
- 2 ARC DISTANCE: 6.4" / 163mm
- 3 NOMINAL VOLTAGE: 5kV
- 4 NOMINAL CURRENT: 3300A
- 5 WITHSTAND VOLTAGE AT 60 sec.: 20kV
- 6 B.I.L. : 75kV
- 7 ROUTINE TEST ACCORDING TO: IEEE C57.19.01
- 8 MAX. TORQUE APPLIED ON FLANGE BOLTS: 40 lbf x ft
- 9 WEIGHT: 85.7 lbs / 38.87 Kg

MACHINED DIMENSIONS

REVISIONS					
ZONE	REV.	DESCRIPTION	DRAWN BY	DATE	APPR.



This drawing is the proprietary property of Electro Composites (2008) ULC, not part of the public domain, and is issued with the express understanding and agreement that it is not to be reproduced or copied in whole or in part or issued for furnishing information to others, or used directly or indirectly, in any way detrimental to the interest of Electro Composites (2008) ULC and is to be returned upon request by Electro Composites (2008) ULC. All Rights Reserved.

ITEM NO.	QTY	DRAWING NO.	PART NO.	DESCRIPTION	NOTE / MAT'L
6	1	S-1001-2022		CAPACITANCE TAP ASSEMBLY	ALUMINUM
5	1	S-3692-2417		CAP	COPPER
4	1	S-7384-6931		ROD ASSEMBLY	COPPER
3	1	S-7384-6930		SHIELD ASSEMBLY	COPPER
2	1	S-7384-6929		FLANGE	ALUMINUM
1	1	S-7384-6928	-001	CASTING, CYCLOALIPHATIC RESIN	EC-APG-02

PARTS LIST

GENERAL TOLERANCES (UNLESS OTHERWISE SPECIFIED) X. ±0.125 .X ±0.094 .XX ±0.063 .XXX ±0.031 ANGLES ±0.25° RADIUS ±0.031		REMOVE BURRS AND BREAK SHARP EDGES DIMENSIONS ARE IN INCHES (UNLESS OTHERWISE SPECIFIED)		Electro Composites solid HV bushings solution	
DRAWN BY: J. CLICHE CHECK BY: PROJECT ENG.: PROJECT MANAGER:		DATE: 2011/11/21 DRAWING NO.: S-7384-6928 REVISION: NR		TITLE: BUSHING 5kV, 3300A MODEL: 075-033-T-675-00 SCALE: 1:5 GENERATED BY: SolidWorks 2009 SHEET: 1 of 1	