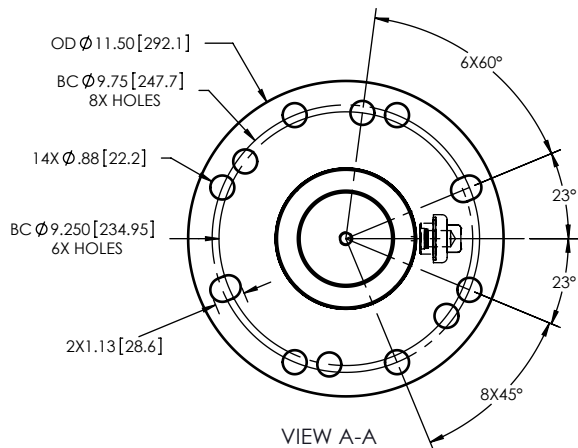
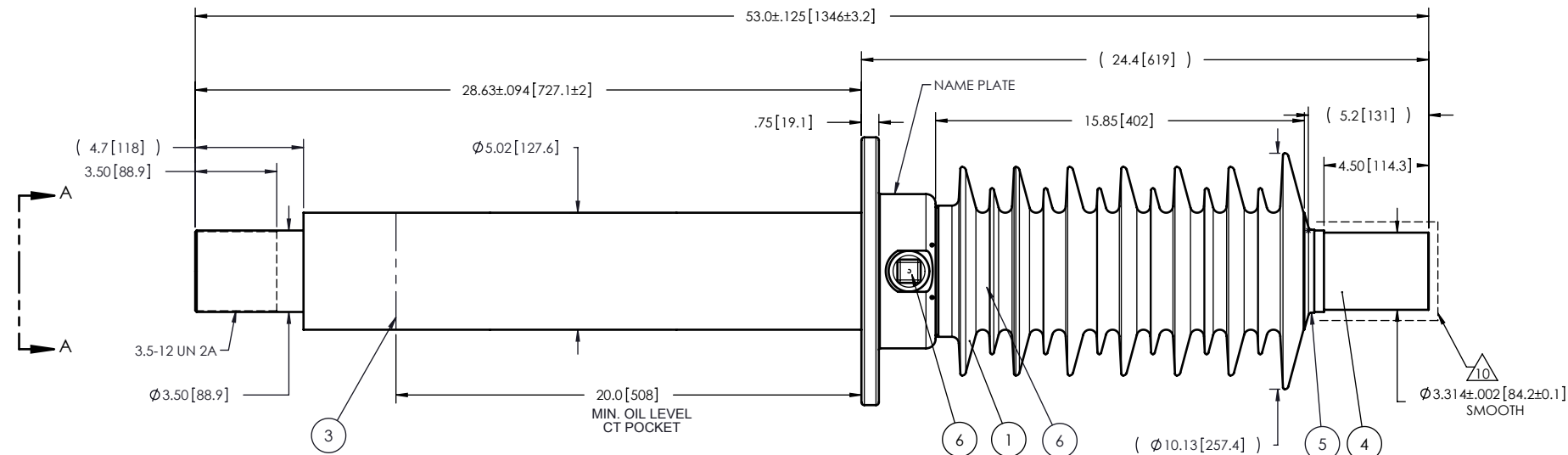


NOTES:

- 1 CREEPAGE DISTANCE: 47.9" / 1218mm
- 2 ARC DISTANCE: 18.4" / 468mm
- 3 NOMINAL VOLTAGE: 25kV
- 4 NOMINAL CURRENT: 3320A
- 5 WITHSTAND VOLTAGE AT 60 sec.: 60kV
- 6 B.I.L. : 150kV
- 7 ROUTINE TEST ACCORDING TO: IEEE C57.19.01
- 8 MAX. TORQUE APPLIED ON FLANGE BOLTS: 70 lbf.ft / 94.9 K.n.
- 9 WEIGHT: 214 lbs / 97.1 Kg

10 SILVER PLATED, AS PER ASTM B700, TYPE 1, GRADE D, CLASS N, NO NICKEL LAYER, FROM 13 TO 20 MICROMETERS THICKNESS



This drawing is the proprietary property of Electro Composites (2008) ULC, not part of the public domain, and is issued with the express understanding and agreement that it is not to be reproduced or copied in whole or in part or issued for furnishing information to others, or used directly or indirectly, in any way detrimental to the interest of Electro Composites (2008) ULC and is to be returned upon request by Electro Composites (2008) ULC. All Rights Reserved.

ITEM NO.	QTY	DRAWING NO.	PART NO.	DESCRIPTION	NOTE / MAT'L
6	1	S-1001-2022		CAPACITANCE TAP ASSEMBLY	ALUMINUM
5	1	S-7450-6997		CAP	COPPER
4	1	S-7450-6996		ROD ASSEMBLY	COPPER
3	1	S-7450-6995		SHIELD ASSEMBLY	COPPER
2	1	S-7450-6994		FLANGE	ALUMINUM
1	1	S-7450-6993	-001	CASTING, CYCLOALIPHATIC RESIN	EC-APG-02

PARTS LIST

GENERAL TOLERANCES (UNLESS OTHERWISE SPECIFIED)

- X. ±0.125
- .X ±0.094
- .XX ±0.063
- .XXX ±0.031
- ANGLES ±0.1°
- RADIUS ±0.031

REMOVE BURRS AND BREAK SHARP EDGES

DIMENSIONS ARE IN INCHES (UNLESS OTHERWISE SPECIFIED)

Electro Composites
solid HV bushings solution

TITLE: BUSHING 25kV, 3320A
MODEL: 150-033-T-685-00

DRAWN BY: J.N.PILOTTE DATE: 2012/01/16

CHECK BY:

PROJECT MGR.:

FORMAT: A

CAGE CODE:

DRAWING NO.:

REVISION: NR

SCALE: 1:7



GENERATED BY: SolidWorks 2009

SHEET: 1 of 1