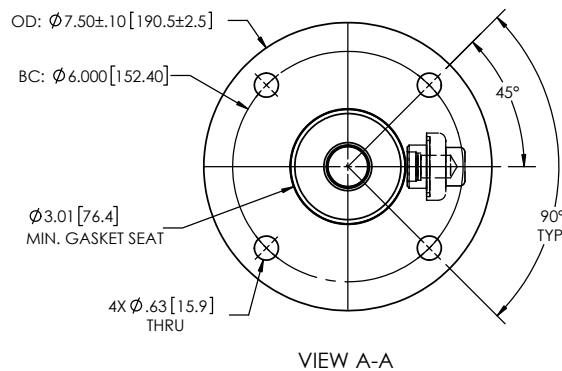
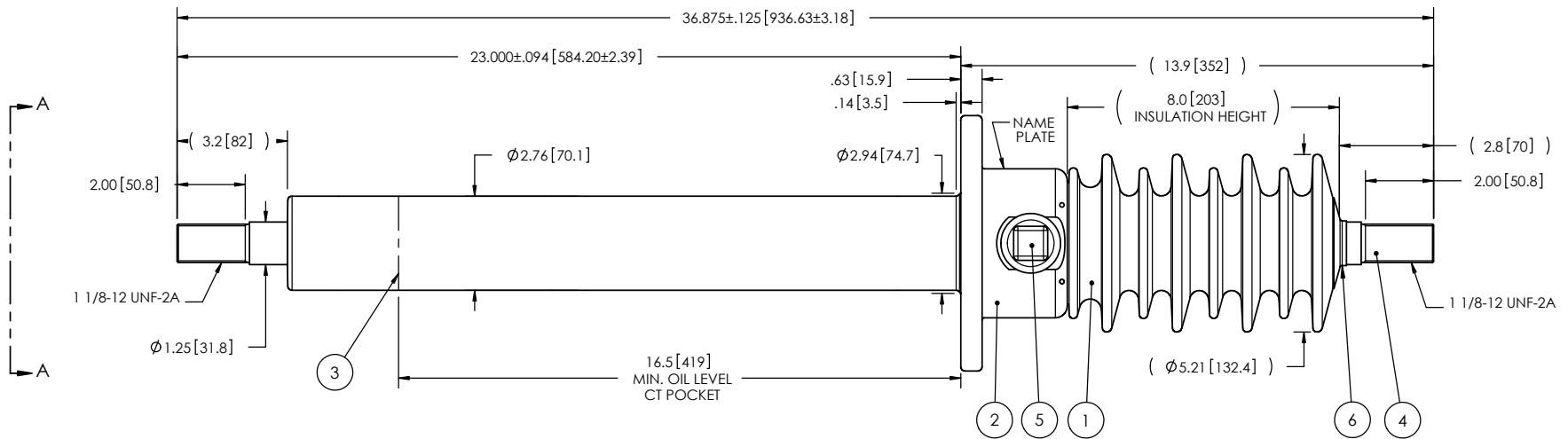


- NOTES:
- 1 CREEPAGE DISTANCE: 19.2" / 488mm
 - 2 ARC DISTANCE: 8.9" / 226mm
 - 3 NOMINAL VOLTAGE: 15kV
 - 4 NOMINAL CURRENT: 1200A
 - 5 VOLTAGE, WITHSTAND, 60 sec.: 50kV
 - 6 BIL : 110kV
 - 7 ROUTINE TEST ACCORDING TO: IEEE C57.19.01
 - 8 MAX. TORQUE APPLIED ON FLANGE BOLTS: 40 lbf·ft / 54.2 N·m
 - 9 WEIGHT: 31 lb / 14.1 kg
 - 10 INSULATION THERMAL LIMIT: 130°C. BUSHING RATED PER IEEE C57.19.00 USUAL SERVICE CONDITIONS. ☺

REVISIONS					
ZONE	REV.	DESCRIPTION	DRAWN BY	DATE	APPR.
B1	A	CYCLOALIPHATIC RESIN REVISED FROM EC-APG-15 TO EC-APG-15NA	J.N.PILOTTE	2012-12-03	Y.V.
F5 F5 A2 B6 B4	B	WEIGHT CHANGE FROM 43.5 TO 31 lb ADD THE NOTE #10: MAXIMUM TEMPERATURE ADD THE "SDC" DESIGNATION TO THE BUSHING NAME. ADD THE "MINIMUM GASKET SEAT" DIMENSION. ADD THE COPPER CAP ON THE TOP (ITEM -006)	J. CLICHE	2016-03-17	Y.V.
F4	C	UPDATE NOTE #10	M. FORGET	2023-05-25	Y.V.



This drawing is the proprietary property of Electro Composites (2008) ULC, not part of the public domain, and is issued with the express understanding and agreement that it is not to be reproduced or copied in whole or in part or issued for furnishing information to others, or used directly or indirectly, in any way detrimental to the interest of Electro Composites (2008) ULC and is to be returned upon request by Electro Composites (2008) ULC. All Rights Reserved.

ITEM NO.	QTY	DRAWING NO.	PART NO.	DESCRIPTION	NOTE / MAT'L
6	1	S-1016-0008		CAP	COPPER
5	1	S-1001-2022		CAPACITANCE TAP ASSEMBLY	ALUMINUM
4	1	S-7520-7120		ROD ASSEMBLY	COPPER
3	1	S-7520-7168		SHIELD ASSEMBLY	COPPER
2	1	S-6190-5791		FLANGE	ALUMINUM
1	1	S-7520-7119	-001	CASTING, CYCLOALIPHATIC RESIN	EC-APG-15NA

PARTS LIST					
GENERAL TOLERANCES (UNLESS OTHERWISE SPECIFIED) X. ±0.125 .X ±0.094 .XX ±0.063 .XXX ±0.031 ANGLES ±0.25° RADIUS ±0.031			Electro Composites™ solid HV bushings solution		
REMOVE BURRS AND BREAK SHARP EDGES DIMENSIONS ARE IN INCHES (UNLESS OTHERWISE SPECIFIED)			TITLE: SDC® BUSHING 15 kV, 1200A MODEL: 110-012-T-706-00		
DRAWN BY: J.N.PILOTTE		DATE: 2012/04/13		FORMAT: A	REVISION: C
PROJECT NO.:		DRAWING NO. S-7520-7119		GENERATED BY: SolidWorks 2022	
PROJECT MANAGER:		SCALE: 1:5	SHEET: 1 of 1		