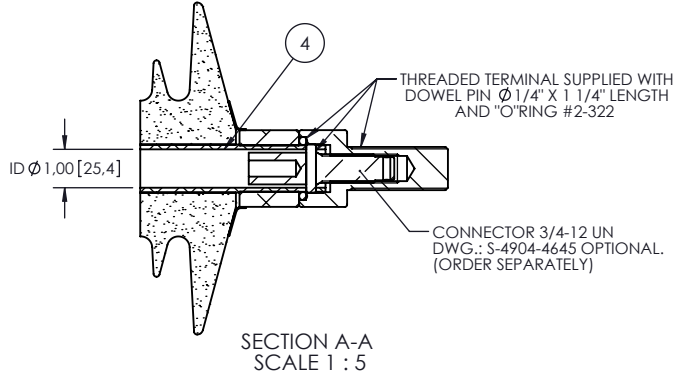
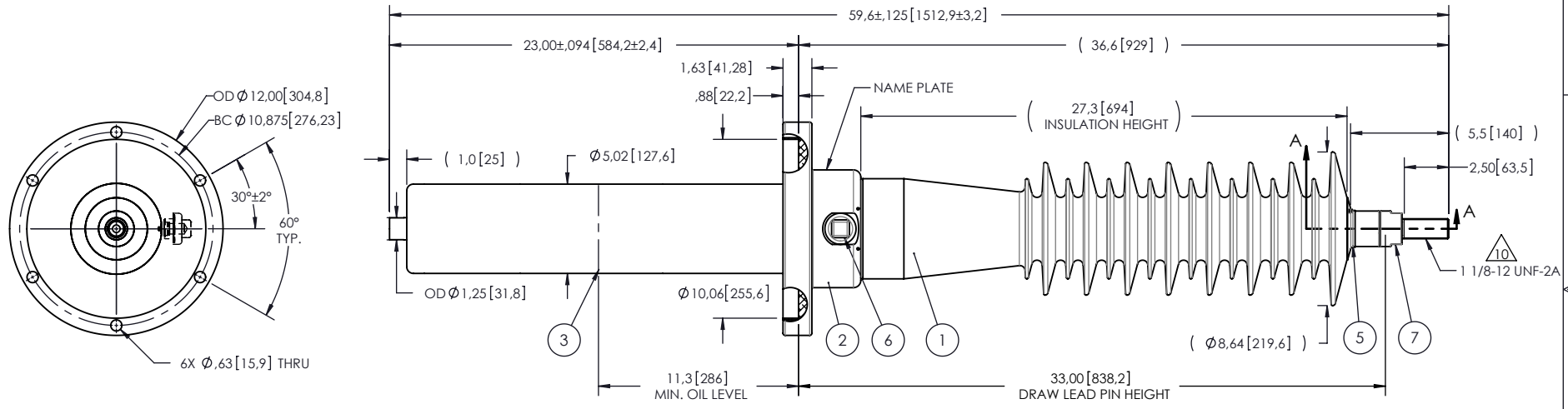


NOTES:

- 1 CREEPAGE DISTANCE: 65.8" / 1672mm
- 2 ARC DISTANCE: 29.3" / 745mm
- 3 NOMINAL VOLTAGE: 69kV
- 4 NOMINAL CURRENT: 400A
- 5 WITHSTAND VOLTAGE AT 60 sec.: 160kV
- 6 B.I.L. : 350kV
- 7 ROUTINE TEST ACCORDING TO: IEEE C57.19.01
- 8 MAX. TORQUE APPLIED ON FLANGE BOLTS: 40 lbf x ft / 54.2 N.m
- 9 WEIGHT: 84 lbs / 38.1 Kg

10 SILVER PLATED, AS PER ASTM B700, TYPE 1, GRADE D, CLASS N, NO NICKEL LAYER, FROM 13 TO 20 MICROMETERS THICKNESS

REVISIONS					
ZONE	REV.	DESCRIPTION	DRAWN BY	DATE	APPR.



ITEM NO.	QTY	DRAWING NO.	PART NO.	DESCRIPTION	NOTE / MAT'L
7	1	S-4904-4657-1		THREADED TERMINAL KIT	COPPER
6	1	S-1001-2022		CAPACITANCE TAP ASSEMBLY	ALUMINUM
5	1	S-1344-0162-1		CAP	ALUMINUM
4	1	S-8316-7715		TUBE ASSEMBLY	ALUMINUM
3	1	S-8316-7714		SHIELD ASSEMBLY	COPPER
2	1	S-8316-7713		FLANGE	ALUMINUM
1	1	S-8316-7712	-001	CASTING, CYCLOALIPHATIC RESIN	EC-APG-02

PARTS LIST

GENERAL TOLERANCES (UNLESS OTHERWISE SPECIFIED)		REPLACE:		Electro Composites[™] solid HV bushings solution			
X.	±0.125						
.X	±0.094			TITLE: SDC [®] BUSHING 69kV, 400A MODEL: 350-004-T-712-01			
.XX	±0.063			FORMAT	CAGE CODE	DRAWING NO.	REVISION
.XXX	±0.010			A		S-8316-7712	NR
ANGLES	±0.25°			SCALE 1:9			
RADIUS	±0.031			GENERATED BY: SolidWorks 2012 SHEET 1 of 1			

REMOVE BURRS AND BREAK SHARP EDGES
DIMENSIONS ARE IN INCHES (UNLESS OTHERWISE SPECIFIED)

This drawing is the proprietary property of Electro Composites (2008) ULC, not part of the public domain, and is issued with the express understanding and agreement that it is not to be reproduced or copied in whole or in part or issued for furnishing information to others, or used directly or indirectly, in any way detrimental to the interest of Electro Composites (2008) ULC and is to be returned upon request by Electro Composites (2008) ULC. All Rights Reserved.